

CERTIFICATE OF LOCATION OF GOVERNMENT CORNER

EAST QUARTER of Section 30, Township 113, Range 38, 5TH P.M.

STATE OF MINNESOTA, County of YELLOW MEDICINE

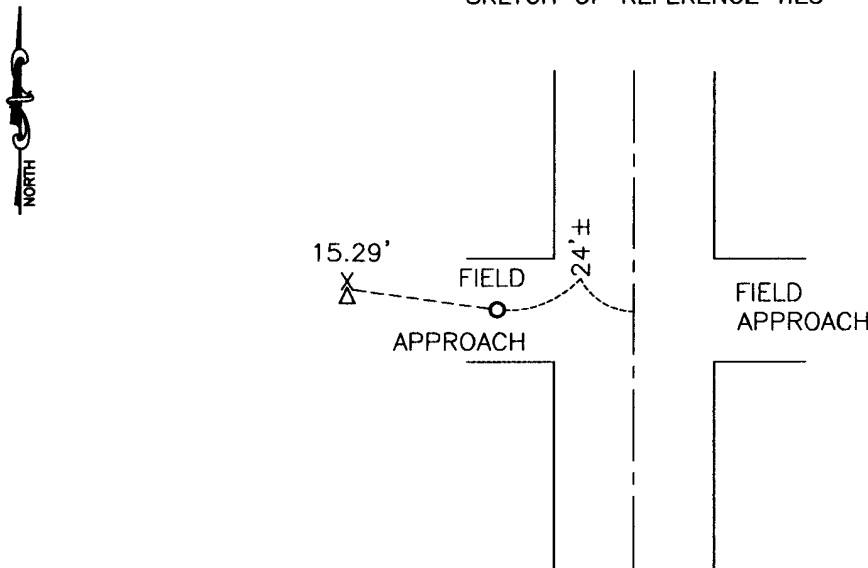
At the corner location shown on the sketch:

On 10-09-2009 found a CONCRETE BLOCK
DATE

left monument as found, lowered monument, removed monument (explain)

On 10-09-2009 placed a 1" PIPE WITH SEAL #43844
DATE

SKETCH OF REFERENCE TIES



Minnesota State Plane Coordinate
System Yellow Medicine County Datum
NAD83 (1996)

N: 108317.957
E: 614181.145

Nail and survey marker in pedestal guard post WNW 15.29'

Statement of evidence relative to this corner location is on back of page.

I hereby certify that this document and the data contained herein was prepared by me or under my direct supervision.

[Signature] 2/10/2010
SIGNATURE DATE

Registration No. 43844

Land Surveyor, Professional Engineer
 County Surveyor, County Engineer

OFFICE OF THE COUNTY RECORDER

County of _____

I hereby certify that this document was filed in the Co. Recorders office at _____ .M on the _____ day of _____ A.D. 20 _____

County Recorder _____

By _____, Deputy

DOCUMENT NO. _____

Statement of Evidence

In 1864, C. E. Davis and J. W. Webb, Jr., did the original subdivision of the township.

On June 10, 1904, John Norguard found a stone in mound at the corner.

On October 9, 2009, Bueltel-Moseng Land Surveying dug by hand and found concrete block with a steel fence post next to it. The distance from the corner to the northeast corner fell within $0.5' \pm$ of the recorded distance and the distance east to the 80 fence was within $3' \pm$. We held to the concrete block and set a 1" pipe with seal #43844 over it.

Doc# 250204 Fee: \$0.00 2 Pages

Office of County Recorder
Yellow Medicine County, Minnesota
I hereby certify that the within instrument
was filed on April 14, 2010 at 8:05 AM

N/C

**Bueltel-Moseng Land Surveying
P. O. Box 32
Marshall, MN 56258**

Kay Zempel, Yellow Medicine County Recorder

By Kay Zempel Deputy