

CERTIFICATE OF LOCATION OF GOVERNMENT CORNER

NORTHEAST of Section 30, Township 115, Range 41, 5TH P.M.

STATE OF MINNESOTA, County of YELLOW MEDICINE

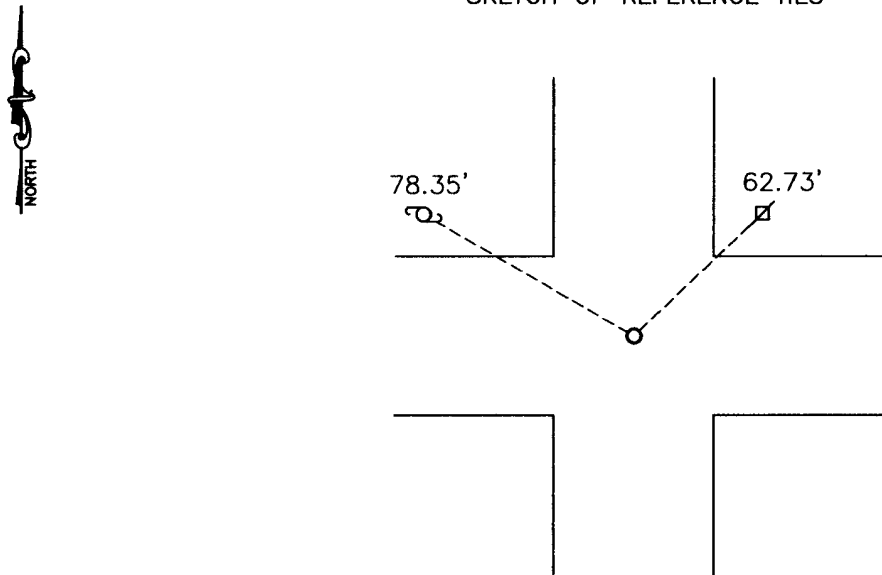
At the corner location shown on the sketch:

On 08-06-2009 found a BRIDGE SPIKE
DATE

left monument as found, lowered monument, removed monument (explain)

On 08-06-2009 placed a 5/8" IRON WITH SEAL #43844
DATE

SKETCH OF REFERENCE TIES



Minnesota State Plane Coordinate
 System Yellow Medicine County Datum
 NAD83 (1996)

N: 174878.157
 E: 518409.838

Nail and seal in power pole NE 62.73'
 Top center of rural water valve NW 78.35'

Statement of evidence relative to this corner location is on back of page.

I hereby certify that this document and the data contained herein was prepared by me or under my direct supervision.

[Signature] 2/10/2010
SIGNATURE DATE

Registration No. 43844

Land Surveyor, Professional Engineer
 County Surveyor, County Engineer

OFFICE OF THE COUNTY RECORDER

County of _____

I hereby certify that this document was filed in the Co. Recorders office at _____ .M on the _____ day of _____ A.D. 20 _____

County Recorder _____

By _____, Deputy

DOCUMENT NO. _____

Statement of Evidence

In 1864, Chas E. Davis and J. W. Webb, Jr., did the original subdivision of the township.

The Yellow Medicine Highway Department found a DNR monument at the corner. They tied it out before construction was done on the road. After construction they replaced the monument with a bridge spike.

On August 6, 2009, Bueltel-Moseng found a bridge spike. We replaced the bridge spike with a $\frac{5}{8}$ " iron with seal #43844.

N/C
Bueltel-Moseng Land Surveying
P. O. Box 32
Marshall, MN 56258

Doc# 250207 Fee: \$0.00 2 Pages
Office of County Recorder
Yellow Medicine County, Minnesota
I hereby certify that the within instrument
was filed on April 14, 2010 at 8:20 AM

Kay Zempel, Yellow Medicine County Recorder

By Kay Zempel ~~Deputy~~