

CERTIFICATE OF LOCATION OF GOVERNMENT CORNER

NORTHEAST of Section 33, Township 114, Range 40, 5TH P.M.

STATE OF MINNESOTA, County of YELLOW MEDICINE

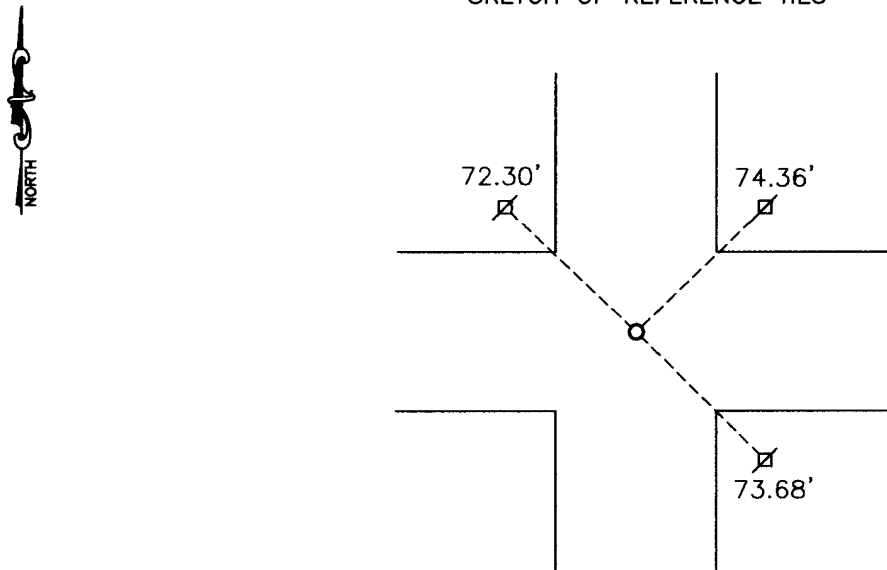
At the corner location shown on the sketch:

On 10-23-2009 found a IRON
DATE

left monument as found, lowered monument, removed monument (explain)

On 10-23-2009 placed a SURVEY MARKER WITH SEAL #43844
DATE

SKETCH OF REFERENCE TIES



Minnesota State Plane Coordinate
System Yellow Medicine County Datum
NAD83 (1996)

N: 137706.456
E: 560774.040

Nail and bottle cap in power pole NE 74.36'
Nail and seal in power pole SE 73.68'
Nail and seal in power pole NW 72.30'

Statement of evidence relative to this corner location is on back of page.

I hereby certify that this document and the data contained herein was prepared by me or under my direct supervision.

[Signature] 2/12/2010
SIGNATURE DATE

Registration No. 43844

Land Surveyor, Professional Engineer
 County Surveyor, County Engineer

OFFICE OF THE COUNTY RECORDER

County of _____

I hereby certify that this document was filed in the Co. Recorders office at _____ M on the _____ day of _____ A.D. 20 _____

County Recorder _____

By _____, Deputy

DOCUMENT NO. _____

Statement of Evidence

In 1864, C. E. Davis and J. W. Webb, Jr., did the original subdivision of the township.

The Yellow Medicine Highway Department recorded an iron at the corner.

On October 23, 2009, Bueltel-Moseng Land Surveying found a PK nail. We removed the PK nail and found an county iron at the corner. We set a survey spike with seal #43844 above the iron.

N/C
Bueltel-Moseng Land Surveying
P. O. Box 32
Marshall, MN 56258

Doc# 250208 Fee: \$0.00 2 Pages
Office of County Recorder
Yellow Medicine County, Minnesota
I hereby certify that the within instrument
was filed on April 14, 2010 at 8:25 AM

Kay Zempel, Yellow Medicine County Recorder

By Kay Zempel Deputy