

# CERTIFICATE OF LOCATION OF GOVERNMENT CORNER

NORTHEAST of Section 28, Township 114, Range 40, 5TH P.M.

STATE OF MINNESOTA, County of YELLOW MEDICINE

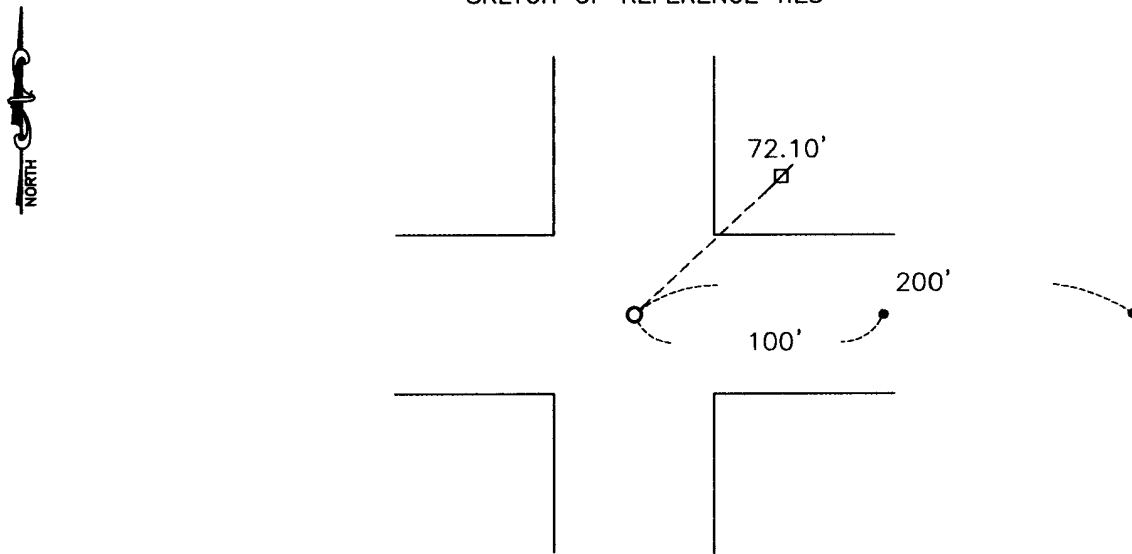
At the corner location shown on the sketch:

On \_\_\_\_\_ found a \_\_\_\_\_  
DATE

left monument as found,  lowered monument,  removed monument (explain)

On 10-23-2009 placed a SURVEY SPIKE WITH SEAL #43844  
DATE

### SKETCH OF REFERENCE TIES



Minnesota State Plane Coordinate  
System Yellow Medicine County Datum  
NAD83 (1996)  
N: 142974.620  
E: 560985.078

Nail and seal in power pole NE 72.10'  
Spike in road East 100'  
Spike in road East 200'

Statement of evidence relative to this corner location is on back of page.

I hereby certify that this document and the data contained herein was prepared by me or under my direct supervision.

[Signature] 2/12/2010  
SIGNATURE DATE

Registration No. 43844

Land Surveyor,  Professional Engineer  
 County Surveyor,  County Engineer

OFFICE OF THE COUNTY RECORDER  
County of \_\_\_\_\_

I hereby certify that this document was filed in the Co. Recorders office at \_\_\_\_\_ .M on the \_\_\_\_\_ day of \_\_\_\_\_ A.D. 20 \_\_\_\_\_

County Recorder \_\_\_\_\_

By \_\_\_\_\_, Deputy

DOCUMENT NO. \_\_\_\_\_

Statement of Evidence

In 1864, C. E. Davis and J. W. Webb, Jr., did the original subdivision of the township.

The Yellow Medicine County Highway Department set ties to the corner.

On October 23, 2009, Bueltel-Moseng Land Surveying set a survey spike with seal #43844 at the corner using the ties that the Yellow Medicine County Highway Department had previously set.

**N/C**  
**Bueltel-Moseng Land Surveying**  
**P. O. Box 32**  
**Marshall, MN 56258**

**Doc# 250209 Fee: \$0.00 2 Pages**

Office of County Recorder  
Yellow Medicine County, Minnesota  
I hereby certify that the within instrument  
was filed on April 14, 2010 at 8:30 AM

Kay Zempel, Yellow Medicine County Recorder

By Kay Zempel Deputy