

# CERTIFICATE OF LOCATION OF GOVERNMENT CORNER

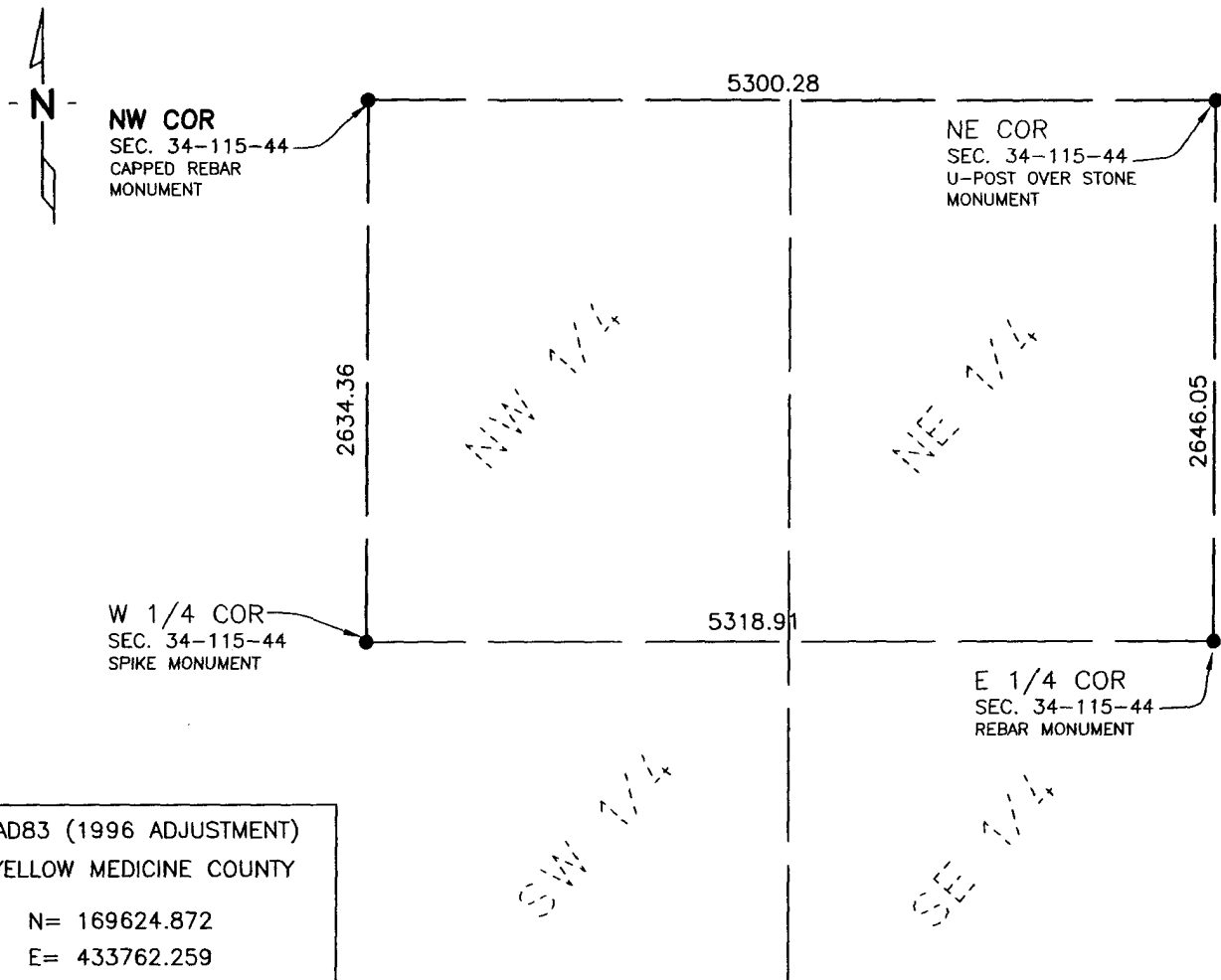
NORTHWEST Corner of Section 34, Township 115 N, Range 44 W, 5th P.M.

STATE OF MINNESOTA, County of YELLOW MEDICINE

At the corner location shown on the sketch:

- On 5/19/10 found a CAPPED REBAR MONUMENT  
DATE
- left monument as found,  lowered monument,  removed monument (explain)
- On \_\_\_\_\_ placed a \_\_\_\_\_  
DATE

## SKETCH OF REFERENCE TIES



Statement of evidence relative to this corner location is on back of page.

I hereby certify that this document and the data contained herein was prepared by me or under my direct supervision.

Rory Jensen 6/29/10  
Rory Jensen DATE

Registration No. 19789

- Land surveyor,  County Surveyor,

Statement of Evidence:

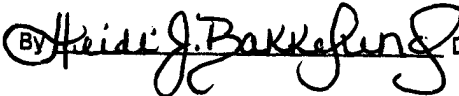
Northwest Corner Section 34, Township 115 North, Range 44 West

- 1871 L Harrington, Deputy Surveyor, set the Northwest Corner post as per instruction.
- 2010 On May 19, a Bolton & Menk Inc survey crew found a capped rebar monument at this corner. The cap was partially destroyed and the crew was unable to read any number on cap. This monument seems reasonable and was accepted as the corner.

**Doc# 250715 Fee: \$0.00 2 Pages**

Office of County Recorder  
Yellow Medicine County, Minnesota  
I hereby certify that the within instrument  
was filed on July 6, 2010 at 9:45 AM

Kay Zempel, Yellow Medicine County Recorder

By  Deputy

N/C Bolton & Menk, Inc.  
1960 Premier Drive  
Mankato, MN 56001-5900