

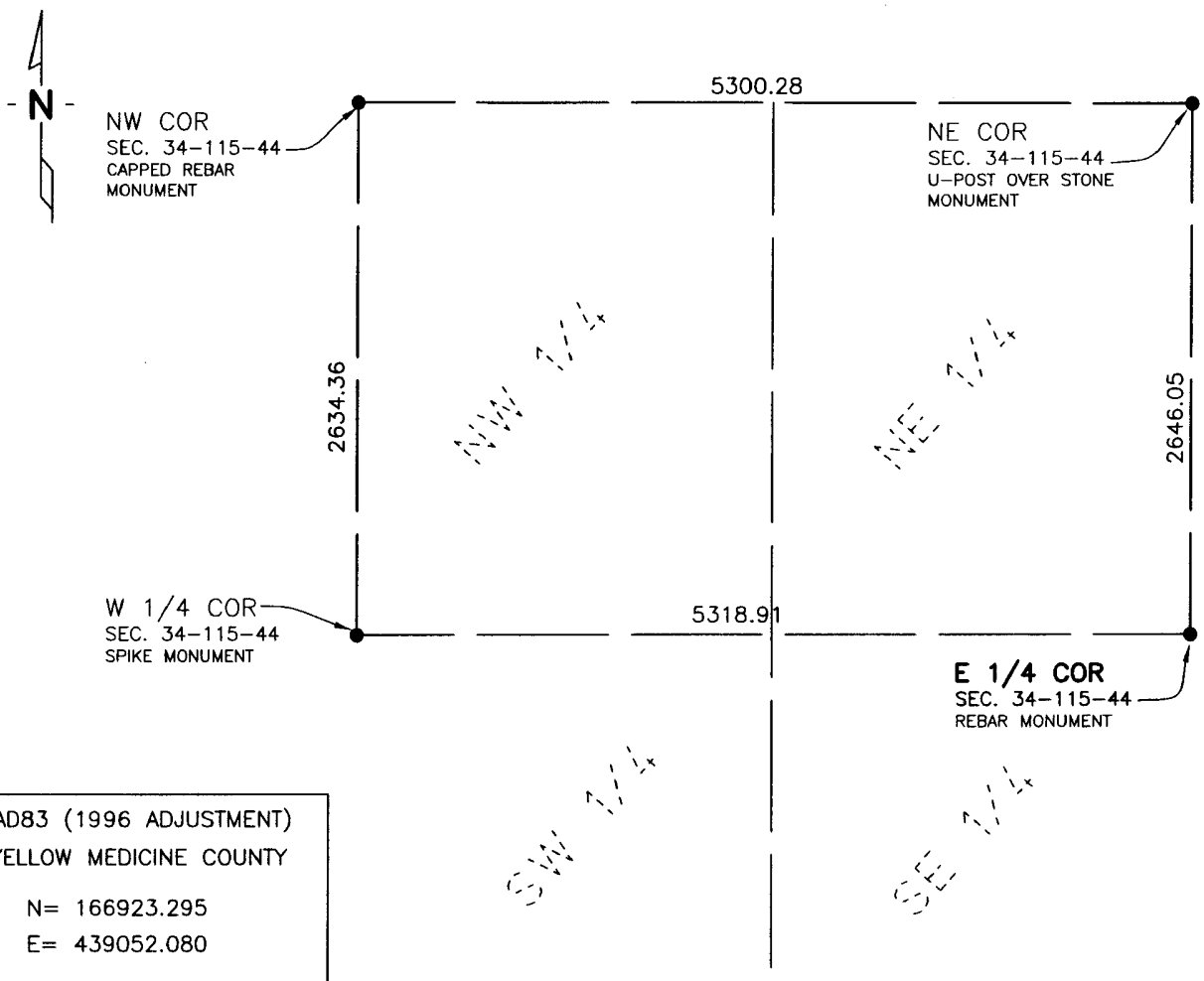
CERTIFICATE OF LOCATION OF GOVERNMENT CORNER

EAST QUARTER Corner of Section 34, Township 115 N, Range 44 W, 5th P.M.
 STATE OF MINNESOTA, County of YELLOW MEDICINE

At the corner location shown on the sketch:

- On 5/19/10 found a REBAR MOUNENT DOWN 0.3 BELOW GRAVEL SURFACE
DATE
- left monument as found, lowered monument, removed monument (explain)
- On _____ placed a _____
DATE

SKETCH OF REFERENCE TIES



NAD83 (1996 ADJUSTMENT)
 YELLOW MEDICINE COUNTY
 N= 166923.295
 E= 439052.080

Statement of evidence relative to this corner location is on back of page.

I hereby certify that this document and the data contained herein was prepared by me or under my direct supervision.

Rory Jensen 6/29/10
 Rory Jensen DATE

Registration No. 19789

Land surveyor, County Surveyor,

Statement of Evidence:

East Quarter Corner Section 34, Township 115 North, Range 44 West

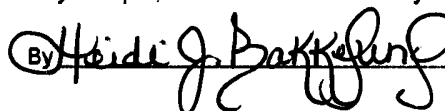
1871 L Harrington, Deputy Surveyor, set the East Quarter Corner post as per instructions.

2010 On May 19, a Bolton & Menk Inc survey crew found a rebar at this corner. The rebar seems reasonable and is accepted as the corner.

Doc# 250716 Fee: \$0.00 2 Pages

Office of County Recorder
Yellow Medicine County, Minnesota
I hereby certify that the within instrument
was filed on July 6, 2010 at 9:50 AM

Kay Zempel, Yellow Medicine County Recorder

By  Deputy

N/C Bolton & Menk, Inc.
1960 Premier Drive
Mankato, MN 56001-5900