

CERTIFICATE OF LOCATION OF GOVERNMENT CORNER

WEST QUARTER Corner of Section 34, Township 115 N, Range 44 W, 5th P.M.
STATE OF MINNESOTA, County of YELLOW MEDICINE

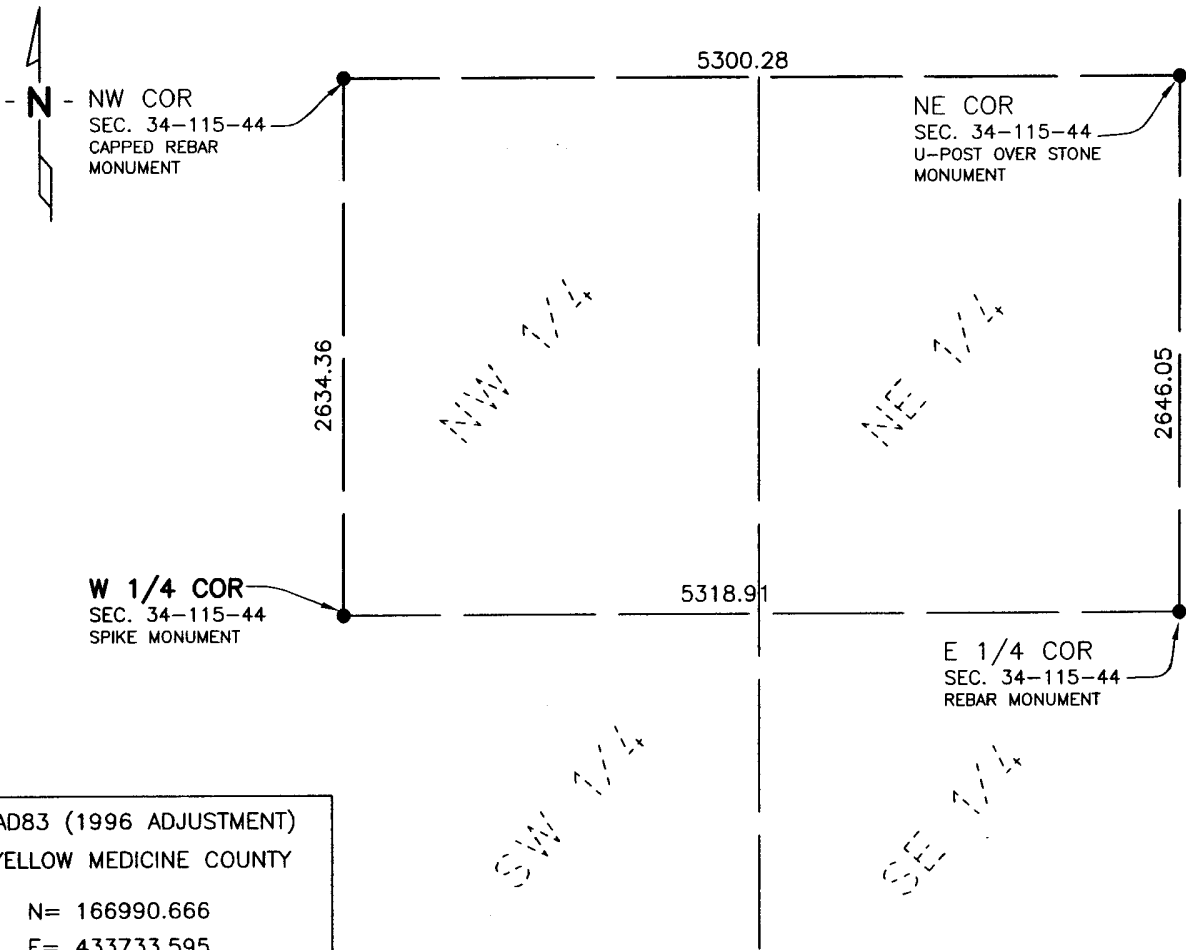
At the corner location shown on the sketch:

On 5/19/10 found a SPIKE MOUNENT DOWN 0.5 BELOW GRAVEL SURFACE
DATE

left monument as found, lowered monument, removed monument (explain)

On _____ placed a _____
DATE

SKETCH OF REFERENCE TIES



NAD83 (1996 ADJUSTMENT)
YELLOW MEDICINE COUNTY
N= 166990.666
E= 433733.595

Statement of evidence relative to this corner location is on back of page.

I hereby certify that this document and the data contained herein was prepared by me or under my direct supervision.

Rory Jensen 6/28/10
Rory Jensen DATE

Registration No. 19789

Land surveyor, County Surveyor,

Statement of Evidence:

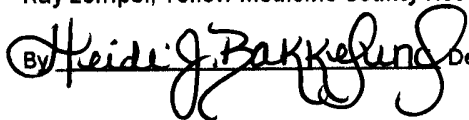
West Quarter Corner Section 34, Township 115 North, Range 44 West

- 1871 L Harrington, Deputy Surveyor, set the West Quarter Corner post as per instructions.
- 2010 On May 19, a Bolton & Menk Inc survey crew found a spike at this corner. The spike seems reasonable and was accepted as the corner.

Doc# 250717 Fee: \$0.00 2 Pages

Office of County Recorder
Yellow Medicine County, Minnesota
I hereby certify that the within instrument
was filed on July 6, 2010 at 9:55 AM

Kay Zempel, Yellow Medicine County Recorder

By  Deputy

N/C Bolton & Menk, Inc.
1960 Premier Drive
Mankato, MN 56001-5900