

# CERTIFICATE OF LOCATION OF GOVERNMENT CORNER

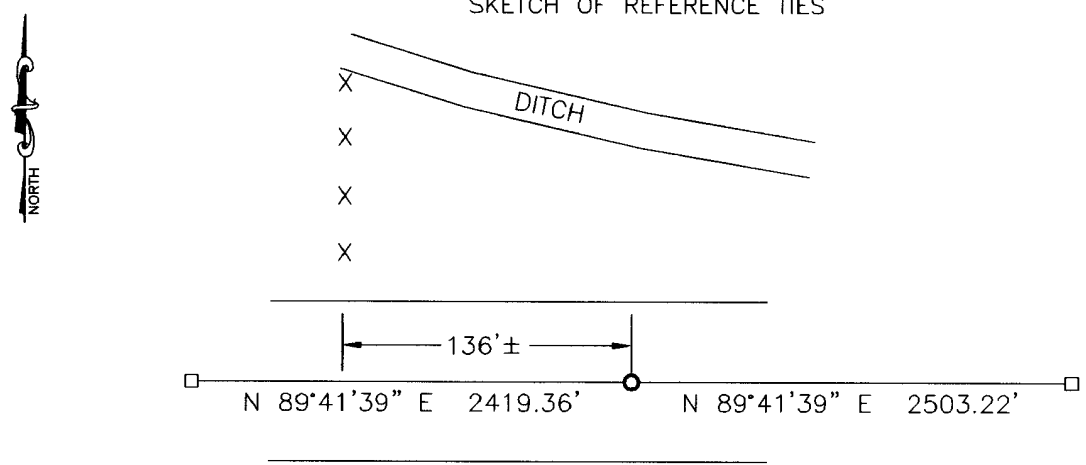
NORTH QUARTER Corner of Section 7, Township 113, Range 39, 5TH P.M.

STATE OF MINNESOTA, County of YELLOW MEDICINE

At the corner location shown on the sketch:

- On \_\_\_\_\_ found a \_\_\_\_\_  
DATE
- left monument as found,  lowered monument,  removed monument (explain)
- On 11-22-2010 placed a SURVEY SPIKE WITH SEAL #43844.  
DATE

### SKETCH OF REFERENCE TIES



Minnesota State Plane Coordinate  
 System Yellow Medicine County Datum  
 NAD83 (1996)  
 N: 127044.449  
 E: 579497.738

Statement of evidence relative to this corner location is on back of page.

I hereby certify that this document and the data contained herein was prepared by me or under my direct supervision.

*Samuel Ben...*  
 SIGNATURE

1/10/11  
 DATE

Registration No. 43844

Land Surveyor,  Professional Engineer  
 County Surveyor,  County Engineer

OFFICE OF THE COUNTY RECORDER  
 County of \_\_\_\_\_

I hereby certify that this document was filed in the Co. Recorders office at \_\_\_\_\_ .M on the \_\_\_\_\_ day of \_\_\_\_\_ A.D. 20 \_\_\_\_\_

County Recorder \_\_\_\_\_

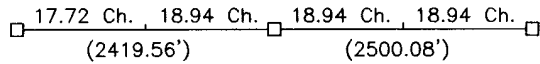
By \_\_\_\_\_, Deputy

DOCUMENT NO. \_\_\_\_\_

Statement of Evidence

In 1864, Chas E. Davis & J. W. Webb, Jr. did the original subdivision of the township.

In 1890, Johan Peterman, the County Surveyor, established the corner as follows:



On November 22, 2010, Bueltel-Moseng Land Surveying set a survey spike with seal #43844 on line and single proportionate distances between the section corners.

Doc# 252034 Fee: \$0.00 2 Pages

Office of County Recorder  
Yellow Medicine County, Minnesota  
I hereby certify that the within instrument  
was filed on January 13, 2011 at 8:10 AM

Kay Zempel, Yellow Medicine County Recorder

By  Deputy

N/C

Bueltel-Moseng Land Surveying  
P.O. Box 32  
Marshall, MN 56258