

# CERTIFICATE OF LOCATION OF GOVERNMENT CORNER

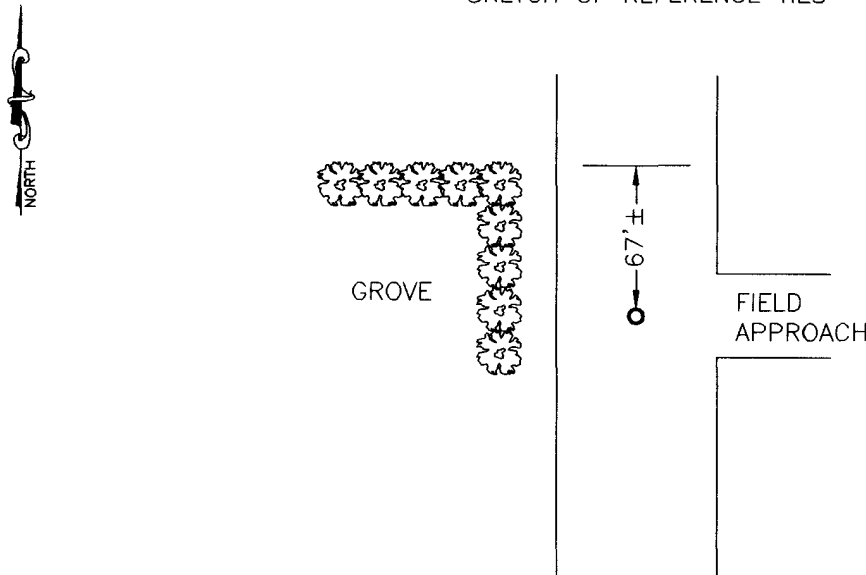
EAST QUARTER Corner of Section 7, Township 113, Range 39, 5TH P.M.

STATE OF MINNESOTA, County of YELLOW MEDICINE

At the corner location shown on the sketch:

- On \_\_\_\_\_ found a \_\_\_\_\_  
DATE
- left monument as found,  lowered monument,  removed monument (explain)
- On 11-22-2010 placed a SURVEY SPIKE WITH SEAL #43844  
DATE

### SKETCH OF REFERENCE TIES



Minnesota State Plane Coordinate  
 System Yellow Medicine County Datum  
 NAD83 (1996)

N: 124402.243  
 E: 582018.422

Statement of evidence relative to this corner location is on back of page.

I hereby certify that this document and the data contained herein was prepared by me or under my direct supervision.

*[Signature]* 1/10/11  
SIGNATURE DATE

Registration No. 43844

- Land Surveyor,  Professional Engineer  
 County Surveyor,  County Engineer

OFFICE OF THE COUNTY RECORDER

County of \_\_\_\_\_

I hereby certify that this document was filed in the Co. Recorders office at \_\_\_\_\_ .M on the \_\_\_\_\_ day of \_\_\_\_\_ A.D. 20 \_\_\_\_\_

County Recorder \_\_\_\_\_

By \_\_\_\_\_, Deputy

DOCUMENT NO. \_\_\_\_\_

**Statement of Evidence**

In 1864, Chas E. Davis & J. W. Webb, Jr. did the original subdivision of the township.

On July 8, 1890, Johan Peterman, the County Surveyor, found the original government post.

In 1903, John Norgaard set a stake on line and equal distance between section corners.

In 1929, John Norgaard set a stake on line and equal distance between section corners.

On November 22, 2010, Bueltel-Moseng Land Surveying set a 5/8" iron with seal #43844 midway and on line between the section corners.

**Doc# 252035 Fee: \$0.00 2 Pages**

Office of County Recorder  
Yellow Medicine County, Minnesota  
I hereby certify that the within instrument  
was filed on January 13, 2011 at 8:15 AM

Kay Zempel, Yellow Medicine County Recorder

By  Deputy

n/c

Bueltel-Moseng Land Surveying  
P.O. Box 32  
Marshall, MN 56258