

CERTIFICATE OF LOCATION OF GOVERNMENT CORNER

NORTHEAST Corner of Section 11, Township 113, Range 39, 5TH P.M.

STATE OF MINNESOTA, County of YELLOW MEDICINE

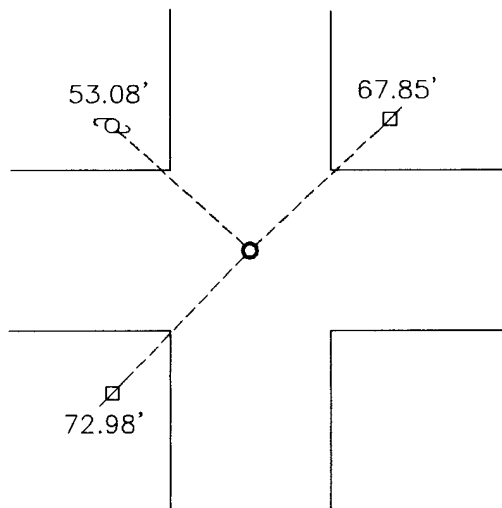
At the corner location shown on the sketch:

On 05-14-2010 found a BRIDGE SPIKE
DATE

left monument as found, lowered monument, removed monument (explain)

On 05-14-2010 placed a 5/8" IRON WITH SEAL #43844
DATE

SKETCH OF REFERENCE TIES




Minnesota State Plane Coordinate
System Yellow Medicine County Datum
NAD83 (1996)

N: 126849.071
E: 603318.456

Nail and survey marker in utility pole NE 67.85'
Top center of water valve NW 53.08'
Nail and bottle cap in utility pole SW 72.98'

Statement of evidence relative to this corner location is on back of page.

I hereby certify that this document and the data contained herein was prepared by me or under my direct supervision.


SIGNATURE 1/6/11
DATE

Registration No. 43844

Land Surveyor, Professional Engineer
 County Surveyor, County Engineer

OFFICE OF THE COUNTY RECORDER

County of _____

I hereby certify that this document was filed in the Co. Recorders office at _____ .M on the _____ day of _____ A.D. 20 _____

County Recorder _____

By _____, Deputy

DOCUMENT NO. _____

Statement of Evidence

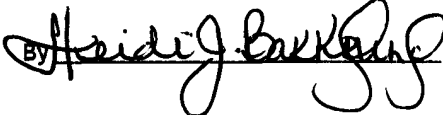
In 1864, Chas E. Davis and J. W. Webb, Jr. did the original subdivision of the township.

On May 14, 2010, Bueltel-Moseng Land Surveying found a county bridge spike at the corner. We placed a 5/8" iron with seal #43844 over the spike.

Doc# 252037 Fee: \$0.00 2 Pages

Office of County Recorder
Yellow Medicine County, Minnesota
I hereby certify that the within instrument
was filed on January 13, 2011 at 8:25 AM

Kay Zempel, Yellow Medicine County Recorder

By  Deputy

N/C

Bueltel-Moseng Land Surveying
P.O. Box 32
Marshall, MN 56258