

# CERTIFICATE OF LOCATION OF GOVERNMENT CORNER

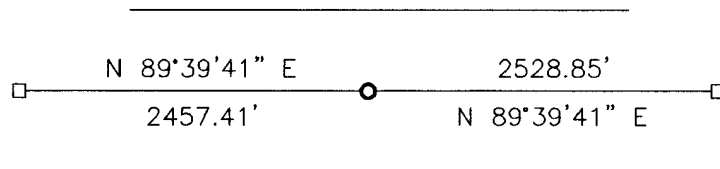
NORTH QUARTER Corner of Section 18, Township 113, Range 39, 5TH P.M.

STATE OF MINNESOTA, County of YELLOW MEDICINE

At the corner location shown on the sketch:

- On \_\_\_\_\_ found a \_\_\_\_\_  
DATE
- left monument as found,  lowered monument,  removed monument (explain)
- On 11-22-2010 placed a 5/8" IRON WITH SEAL #43844  
DATE

### SKETCH OF REFERENCE TIES



Minnesota State Plane Coordinate  
 System Yellow Medicine County Datum  
 NAD83 (1996)

N: 121731.733  
 E: 579507.117

Statement of evidence relative to this corner location is on back of page.

I hereby certify that this document and the data contained herein was prepared by me or under my direct supervision.

*David B. ...* 1/10/11  
SIGNATURE DATE

Registration No. 43844

- Land Surveyor,  Professional Engineer  
 County Surveyor,  County Engineer

OFFICE OF THE COUNTY RECORDER

County of \_\_\_\_\_

I hereby certify that this document was filed in the Co. Recorders office at \_\_\_\_\_ M on the \_\_\_\_\_ day of \_\_\_\_\_ A.D. 20 \_\_\_\_\_

County Recorder \_\_\_\_\_

By \_\_\_\_\_, Deputy

DOCUMENT NO. \_\_\_\_\_

## Statement of Evidence

In 1864, Chas E. Davis & J. W. Webb, Jr. did the original subdivision of the township.

On July 8, 1890, Jonah Peterman, the County Surveyor, established the corner.

In March 1912, John Norgaard located the corner as follows:

The corner was located according to the Bahm Brothers testimony. The corner is located where the original government corner was.



On November 22, 2010, Bueltel-Moseng Land Surveying set a 5/8" iron with seal #43844 on line and single proportionate distances between the section corners.

**Doc# 252038 Fee: \$0.00 2 Pages**

Office of County Recorder

Yellow Medicine County, Minnesota

I hereby certify that the within instrument  
was filed on January 13, 2011 at 8:30 AM

Kay Zempel, Yellow Medicine County Recorder

By  Deputy

N/C

Bueltel-Moseng Land Surveying  
P.O. Box 32  
Marshall, MN 56258