

CERTIFICATE OF LOCATION OF GOVERNMENT CORNER

NORTH QUARTER Corner of Section 19, Township 114, Range 44, 5TH P.M.

STATE OF MINNESOTA, County of YELLOW MEDICINE

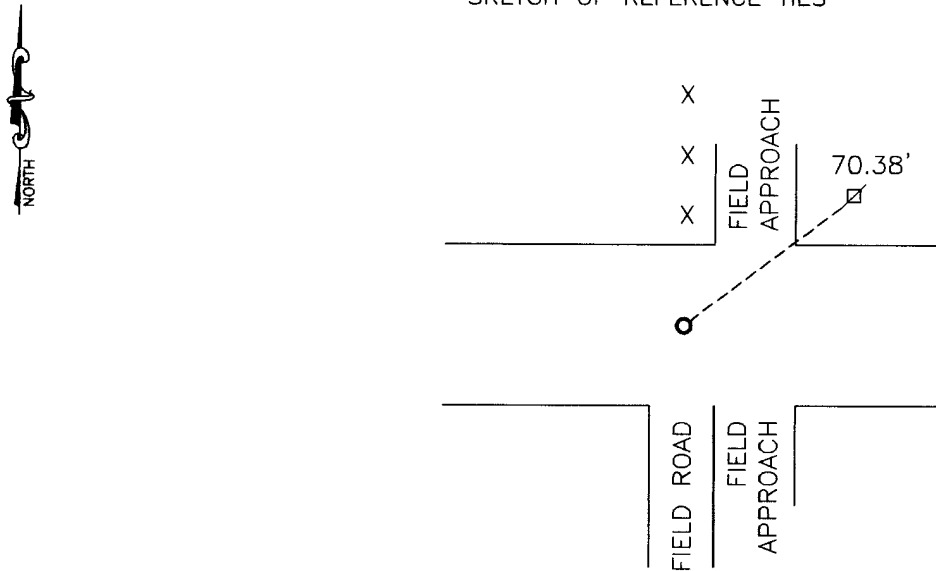
At the corner location shown on the sketch:

On _____ found a _____
DATE

left monument as found, lowered monument, removed monument (explain)

On 11-12-2010 placed a 1" PIPE WITH SEAL #43844
DATE

SKETCH OF REFERENCE TIES



Minnesota State Plane Coordinate
System Yellow Medicine County Datum
NAD83 (1996)

Nail and survey marker in utility pole NE 70.38'

N: 148709.922
E: 420575.509

Statement of evidence relative to this corner location is on back of page.

I hereby certify that this document and the data contained herein was prepared by me or under my direct supervision.

James Benish 1/6/11
SIGNATURE DATE

Registration No. 43844

Land Surveyor, Professional Engineer
 County Surveyor, County Engineer

OFFICE OF THE COUNTY RECORDER
County of _____

I hereby certify that this document was filed in the Co. Recorders office at _____ .M on the _____ day of _____ A.D. 20 _____

County Recorder _____

By _____, Deputy

DOCUMENT NO. _____

Statement of Evidence

In 1871, L. Harrington did the original subdivision of the township.

~~In 1951, MNDot found a stone 18" below road surface.~~

JJB

On November 12, 2010, Bueltel-Moseng Land Surveying dug with a backhoe and found nothing. We set a 1" pipe with seal #43844 on line and single proportionate distance between section corners. It is in line with the fence to the north.

Doc# 252047 Fee: \$0.00 2 Pages

Office of County Recorder
Yellow Medicine County, Minnesota
I hereby certify that the within instrument
was filed on January 13, 2011 at 9:15 AM

Kay Zempel, Yellow Medicine County Recorder

By *Heidi J. Bakke* Deputy

N/C

Bueltel-Moseng Land Surveying
P.O. Box 32
Marshall, MN 56258