

CERTIFICATE OF LOCATION OF GOVERNMENT CORNER

EAST QUARTER Corner of Section 4, Township 114, Range 45, 5TH P.M.

STATE OF MINNESOTA, County of YELLOW MEDICINE

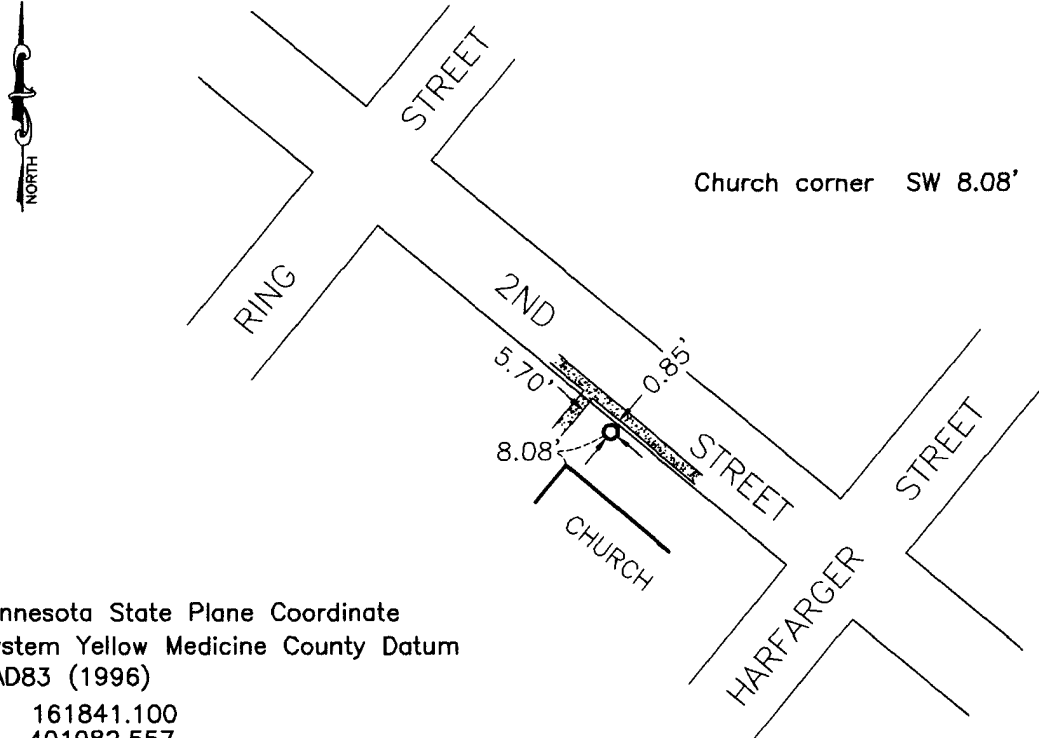
At the corner location shown on the sketch:

On 06-15-2010 found a FLAT BAR
DATE

left monument as found, lowered monument, removed monument (explain)

On 06-15-2010 placed a 1" PIPE WITH SEAL #43844
DATE

SKETCH OF REFERENCE TIES



Minnesota State Plane Coordinate
System Yellow Medicine County Datum
NAD83 (1996)

N: 161841.100
E: 401982.557

Statement of evidence relative to this corner location is on back of page.

I hereby certify that this document and the data contained herein was prepared by me or under my direct supervision.

[Signature]
SIGNATURE

1/6/11
DATE

Registration No. 43844

Land Surveyor, Professional Engineer
 County Surveyor, County Engineer

OFFICE OF THE COUNTY RECORDER

County of _____

I hereby certify that this document was filed in the Co. Recorders office at _____ M on the _____ day of _____ A.D. 20 _____

County Recorder _____

By _____, Deputy

DOCUMENT NO. _____

Statement of Evidence

In 1871, L. Harrington did the original subdivision of the township.

In August 1876, the corner was shown on the Original Plat of Canby, Minnesota.

On June 15, 2010, Bueltel-Moseng Land Surveying found a flat bar at the corner. It fit with other existing evidence and distances recorded on the Original Plat of the City of Canby, Minnesota. We replaced the iron with a 1" pipe with seal #43844 at the corner.

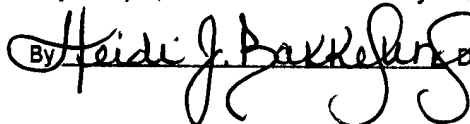
Doc# 252049 Fee: \$0.00 2 Pages

Office of County Recorder

Yellow Medicine County, Minnesota

I hereby certify that the within instrument
was filed on January 13, 2011 at 9:25 AM

Kay Zempel, Yellow Medicine County Recorder

By  Deputy

N/C

Bueltel-Moseng Land Surveying

P.O. Box 32

Marshall, MN 56258