

# CERTIFICATE OF LOCATION OF GOVERNMENT CORNER

NORTHEAST Corner of Section 13, Township 114, Range 45, 5TH P.M.

STATE OF MINNESOTA, County of YELLOW MEDICINE

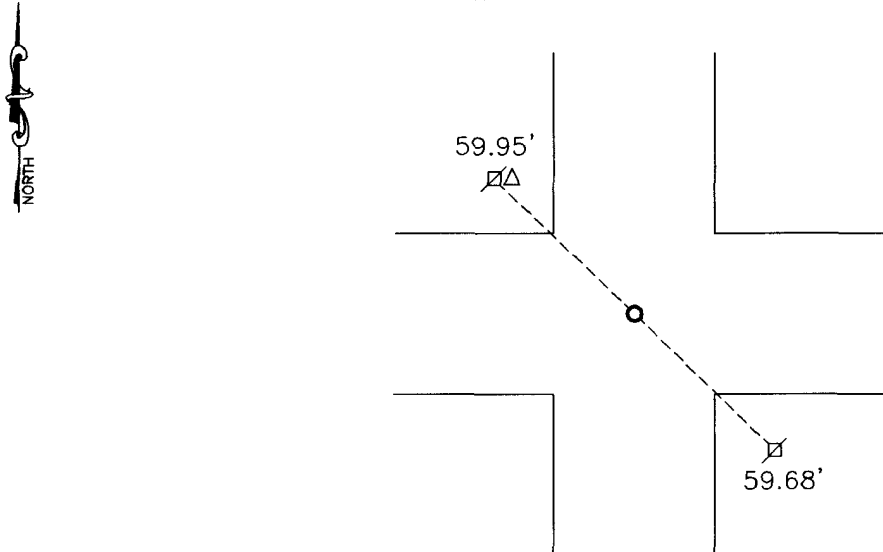
At the corner location shown on the sketch:

On 11-08-2010 found a UNRECORDED IRON  
DATE

left monument as found,  lowered monument,  removed monument (explain)

On 11-08-2010 placed a 5/8" IRON WITH SEAL #43844.  
DATE

SKETCH OF REFERENCE TIES



Minnesota State Plane Coordinate  
System Yellow Medicine County Datum  
NAD83 (1996)  
N: 154012.600  
E: 417902.191

Spike and washer in cut of utility pole NW 59.95'  
Nail and washer in utility pole SE 59.68'

Statement of evidence relative to this corner location is on back of page.

I hereby certify that this document and the data contained herein was prepared by me or under my direct supervision.

*Samuel B. ...* 1/6/11  
SIGNATURE DATE

Registration No. 43844

Land Surveyor,  Professional Engineer  
 County Surveyor,  County Engineer

OFFICE OF THE COUNTY RECORDER

County of \_\_\_\_\_

I hereby certify that this document was filed in the Co. Recorders office at \_\_\_\_\_ .M on the \_\_\_\_\_ day of \_\_\_\_\_ A.D. 20 \_\_\_\_\_

County Recorder \_\_\_\_\_

By \_\_\_\_\_, Deputy

DOCUMENT NO. \_\_\_\_\_

## Statement of Evidence

In 1858, J.W. Neely did the original survey of the east township line.

In June 1892, Johan Peterman set a stone at the corner.

In October 1912, John Norgaard recorded a jasper stone at the corner.

In September 1940, C.E. Lange found a stone at the corner while doing a resurvey of Section 13-114-45.

On November 8, 2010, Bueltel-Moseng Land Surveying found an unrecorded iron at the corner. We tied out the iron, removed it, and dug with a backhoe. We did not find anything else. We held to the found irons position and replaced it with an 5/8" iron with seal #43844.

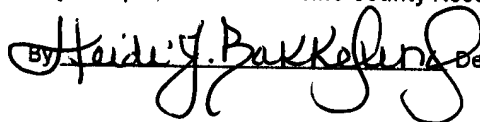
Doc# 252050 Fee: \$0.00 2 Pages

Office of County Recorder

Yellow Medicine County, Minnesota

I hereby certify that the within instrument  
was filed on January 13, 2011 at 9:30 AM

Kay Zempel, Yellow Medicine County Recorder

By  Deputy



Bueltel-Moseng Land Surveying  
P.O. Box 32  
Marshall, MN 56258