

# CERTIFICATE OF LOCATION OF GOVERNMENT CORNER

NORTHEAST Corner of Section 24, Township 114, Range 45, 5TH P.M.

STATE OF MINNESOTA, County of YELLOW MEDICINE

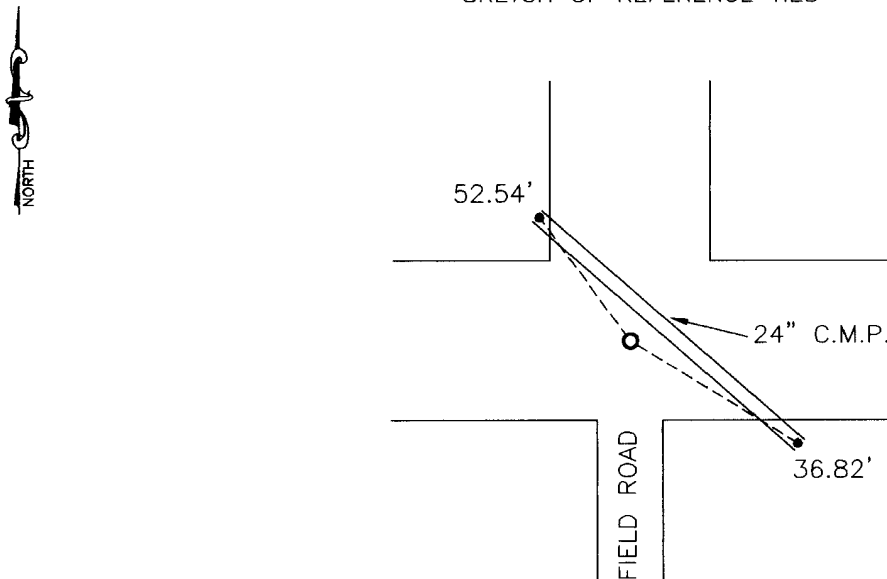
At the corner location shown on the sketch:

On \_\_\_\_\_ found a \_\_\_\_\_  
DATE

left monument as found,  lowered monument,  removed monument (explain)

On 11-12-2010 placed a 1" IRON PIPE WITH SEAL #43844.  
DATE

SKETCH OF REFERENCE TIES



Minnesota State Plane Coordinate  
System Yellow Medicine County Datum  
NAD83 (1996)  
N: 148724.577  
E: 417902.657

PK nail and bottle cap in top of C.M.P. NW 52.54'  
PK nail and bottle cap in top of C.M.P. SE 36.82'

Statement of evidence relative to this corner location is on back of page.

I hereby certify that this document and the data contained herein was prepared by me or under my direct supervision.

*Samuel Buda*  
SIGNATURE DATE 1/10/11

Registration No. 43844

Land Surveyor,  Professional Engineer  
 County Surveyor,  County Engineer

OFFICE OF THE COUNTY RECORDER  
County of \_\_\_\_\_

I hereby certify that this document was filed in the Co. Recorders office at \_\_\_\_\_ .M on the \_\_\_\_\_ day of \_\_\_\_\_ A.D. 20 \_\_\_\_\_

County Recorder \_\_\_\_\_

By \_\_\_\_\_, Deputy

DOCUMENT NO. \_\_\_\_\_

## Statement of Evidence

In 1858, W.J. Neely did the original survey of the west line of the township.

In September 1940, C.E. Lange found stones at the northeast and southeast corners of Section 13-114-45. He set iron pipes at the northeast corner of the South Half of the Southeast Quarter and the southeast corner of the North Half of the Northeast Quarter Section 13.

On November 12, 2010, Bueltel-Moseng Land Surveying found the irons at the northeast corner, the northeast corner of the South Half of the Southeast Quarter, and the southeast corner of the North Half of the Northeast Quarter from the 1940 survey. We used these corners to set a 1" iron pipe with seal #43844, by projecting line and using the recorded distances. We did not dig at the corner because there is a 24" culvert running diagonally through road.


Doc# 252051 Fee: \$0.00 2 Pages

Office of County Recorder

Yellow Medicine County, Minnesota

I hereby certify that the within instrument  
was filed on January 13, 2011 at 9:35 AM

Kay Zempel, Yellow Medicine County Recorder

By  Deputy

N/C

Bueltel-Moseng Land Surveying  
P.O. Box 32  
Marshall, MN 56258