

# CERTIFICATE OF LOCATION OF GOVERNMENT CORNER

NORTHEAST Corner of Section 23, Township 114, Range 46, 5TH P.M.

STATE OF MINNESOTA, County of YELLOW MEDICINE

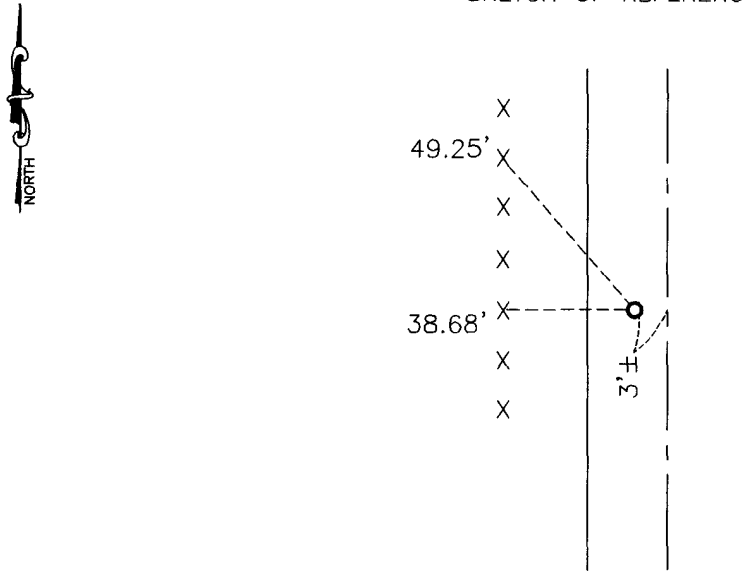
At the corner location shown on the sketch:

On 08-16-2010 found a 1" PIPE OVER GRANITE MONUMENT  
DATE

left monument as found,  lowered monument,  removed monument (explain)

On \_\_\_\_\_ placed a \_\_\_\_\_  
DATE

### SKETCH OF REFERENCE TIES



Minnesota State Plane Coordinate  
System Yellow Medicine County Datum  
NAD83 (1996)

N: 148679.783  
E: 380684.696

Nail and survey marker in corner fence post West 38.68'  
Nail and survey marker in 3rd wooden fence post NW 49.25'

Statement of evidence relative to this corner location is on back of page.

I hereby certify that this document and the data contained herein was prepared by me or under my direct supervision.

*Samuel Smith* 1/10/11  
SIGNATURE DATE

Registration No. 43844

Land Surveyor,  Professional Engineer  
 County Surveyor,  County Engineer

OFFICE OF THE COUNTY RECORDER

County of \_\_\_\_\_

I hereby certify that this document was filed in the Co. Recorders office at \_\_\_\_\_ M on the \_\_\_\_\_ day of \_\_\_\_\_ A.D. 20 \_\_\_\_\_

County Recorder \_\_\_\_\_

By \_\_\_\_\_, Deputy

DOCUMENT NO. \_\_\_\_\_

Statement of Evidence


In 1871, L. Harrington did the original subdivision of the township.

On August 16, 2010, Bueltel-Moseng Land Surveying found a 1" pipe over a granite monument. We held to the corner.

Doc# 252055 Fee: \$0.00 2 Pages

Office of County Recorder  
Yellow Medicine County, Minnesota  
I hereby certify that the within instrument  
was filed on January 13, 2011 at 9:55 AM

Kay Zempel, Yellow Medicine County Recorder

By  Deputy

N/C

Bueltel-Moseng Land Surveying  
P.O. Box 32  
Marshall, MN 56258