

CERTIFICATE OF LOCATION OF GOVERNMENT CORNER

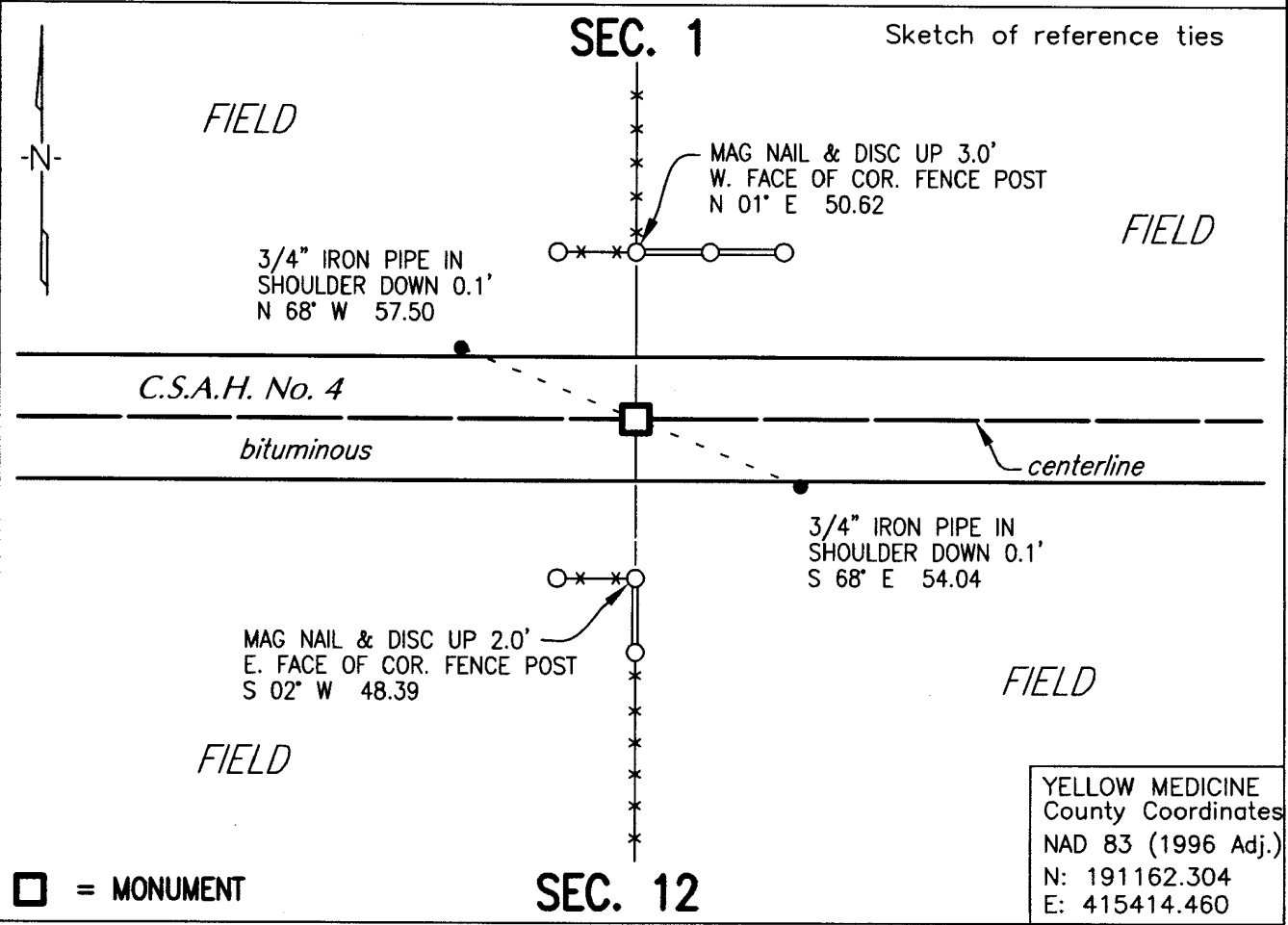
NORTH QUARTER Corner of Section 12, Township 115N, Range 45W, 5TH P.M.
STATE OF MINNESOTA, County of YELLOW MEDICINE.

At the corner location shown on the sketch :

On 10-22-2010 found nothing.
Date

left monument as found, lowered monument, removed monument (explain)

On 12-16-2010 set a 3/4" x 18" iron pipe with plastic cap stamped LS 22422, on line
Date
between section corners and in line with fences north and south.



Statement of evidence relative to this corner location is on back page

I hereby certify that this document and the data contained herein was prepared by me or under my direct supervision.

Douglas J. Reed
Signature Date 3-8-2011

Registration No. 22422

Land Surveyor, Professional Engineer

County Surveyor, County Engineer

OFFICE OF THE COUNTY RECORDER

County of _____

I hereby certify that this document was filed in the Co. Recorder office at _____ M on the _____ day of _____ A.D., 20____

County Recorder _____

By _____, Deputy

DOCUMENT NO. _____

Statement of Evidence

NORTH QUARTER CORNER SECTION 12, TOWNSHIP 115 NORTH, RANGE 45 WEST, 5TH P.M.

- 1871 Lewis Harrington, Deputy Surveyor, set a post and raised a mound per instructions for the corner during the original survey.
- 1916 John Norguard, County Surveyor, conducted a survey of Section 1, T115N, R45W. His notes indicate he found all 4 Section Corners and then places the North, South and West ¼ Corners midway and on-line between Section corners. His notes do not describe the monuments found or set.
- 1930 Yellow Medicine Highway Department Construction Plans for S.R. #4 shows fences running north and south, but do not indicate a monument.
- 1957 Yellow Medicine Highway Department Construction Plans for S.R. #4 shows fences running north and south, but do not indicate a monument.
- 2010 Kevin Kuisle and Tom Runions, Yaggy Colby Associates survey crew, searched the area with a metal detector but did not find any evidence of a monument. A temporary nail position was set and analyzed on a projection of old barb wire fences running north and south from the road and on a straight line between the northwest and northeast corners of Section 12, as this was the same procedure Norguard used in 1916. This temporary nail position is also on the centerline of the bituminous County State Aid Highway No. 4. The County Construction plans from 1930 and 1957 both show the road centerline running straight between the section corners, with no P.I. at the quarter corner. The E-W fence lines that run parallel to CSAH No. 4 are 50.2 feet north and 48.7 feet south of the road centerline /temporary nail position. This temporary position is 3.1 feet west of a lost position and on line between the 2 nearest section corners. The projection of a monument and fence line at the north quarter of Section 1 through a fence corner at the center of Section 1 is within 0.5 foot of the temporary nail position. The same is true for a field line at the south quarter of Section 12 through a fence corner at the center of Section 12. The following distances were measured from the temporary nail:

East 2650.0 feet to the NE corner of Sec. 12.

West 2656.3 feet to the NW corner of Sec. 12.

A 1/16th fence line south of the temporary nail position falls within 1.8 feet of the ½ mile split to the fence corner at the center of Section 12. After analysis of the record and survey data and based on the best available evidence, the position of the temporary nail is accepted as a perpetuation of the Original Public Land Survey corner and a ¾" x 18" iron pipe with plastic cap stamped LS 22422 was set and land ties were measured and recorded.

Doc# 252384 Fee: \$0.00 2 Pages

Office of County Recorder

Yellow Medicine County, Minnesota

**I hereby certify that the within instrument
was filed on March 10, 2011 at 1:40 PM**

Kay Zempel, Yellow Medicine County Recorder

By  Deputy

N/C

Yaggy Colby Associates
717 3rd Ave. SE
Rochester, MN 55904