

# CERTIFICATE OF LOCATION OF GOVERNMENT CORNER

East Quarter \_\_\_\_\_ Corner of Section 18, Township 115N, Range 39W

5th Principal Meridian, State of Minnesota, County of Yellow Medicine

At the corner location shown on the sketch:

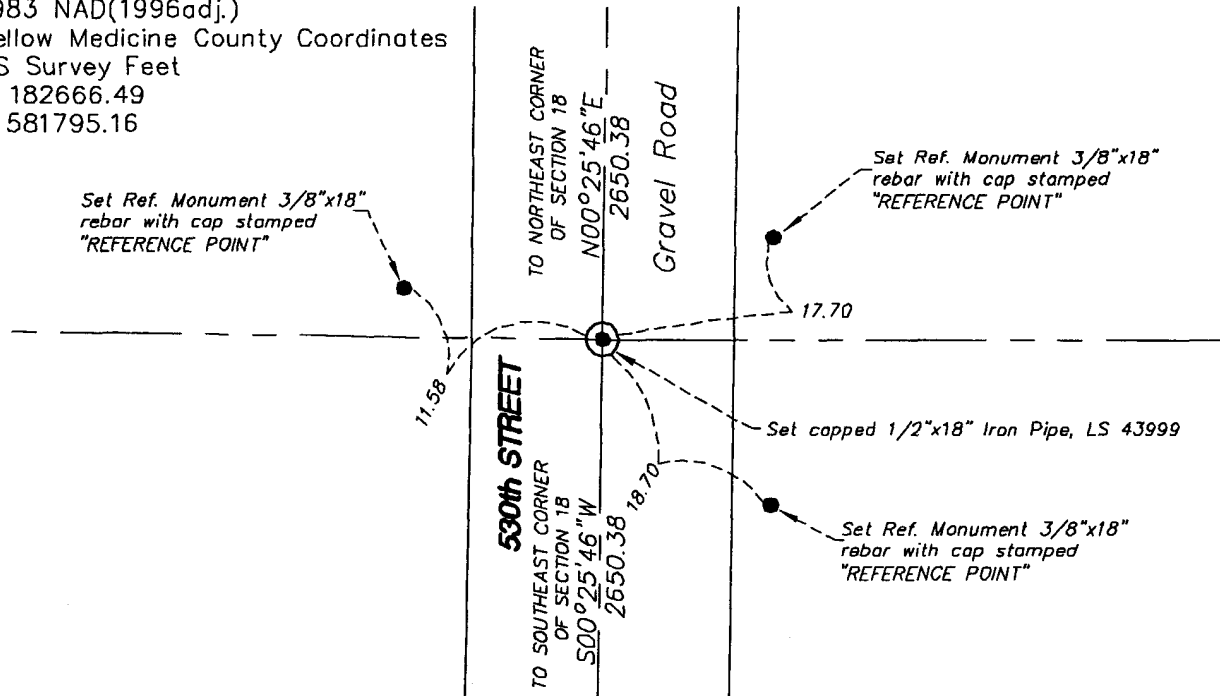
On 04/08/11 found a nothing  
DATE

left monument as found     lowered monument     removed monument (explain)

On 04/08/11 placed a 1/2"x18" Iron pipe, cap #43999, and set three reference ties  
DATE

1983 NAD(1996adj.)  
Yellow Medicine County Coordinates  
US Survey Feet  
N 182666.49  
E 581795.16

### SKETCH OF REFERENCE TIES



N.T.S.

Statement of evidence for this corner location is on back of this page.

I hereby certify that this document was researched and prepared by me or under my direct supervision and that I am a licensed Land Surveyor under the laws of the State of Minnesota.

Signature *Robert A. Hauke*

Date 04/27/11 License No. 43999

Title:

- Land Surveyor     Professional Engineer  
 County Surveyor     County Engineer

OFFICE OF THE COUNTY RECORDER

County of \_\_\_\_\_

I hereby certify that this document was filed in the Co.

Records office at \_\_\_\_\_ M. on the \_\_\_\_\_ day of \_\_\_\_\_ A.D. 20\_\_\_\_

County Recorder \_\_\_\_\_

by \_\_\_\_\_, Deputy

DOCUMENT NO. \_\_\_\_\_

STATEMENT OF EVIDENCE:

EAST QUARTER CORNER SECTION 18 T115N, R39W, 5TH PM

On April 08, 2011 Westwood Professional Services, Inc. dug a 8'X10' and 3.0' deep hole with a backhoe (Baker Brothers) and found nothing. We set 1/2"X18" Iron pipe, cap number 43999 at lost position, along with three reference ties.

**Doc# 252848 Fee: \$0.00 2 Pages**

**Office of County Recorder  
Yellow Medicine County, Minnesota  
I hereby certify that the within instrument  
was filed on May 17, 2011 at 9:30 AM**

**Kay Zempel, Yellow Medicine County Recorder**

By  Deputy

**N/C**

**WESTWOOD PROFESSIONAL SERVICES  
ATTN: ROBERT HOULE, LS  
7699 ANAGRAM DRIVE  
EDEN PRAIRIE, MN 55344**