

CERTIFICATE OF LOCATION OF GOVERNMENT CORNER

South Quarter _____ Corner of Section 18, Township 115N, Range 39W

5th Principal Meridian, State of Minnesota, County of Yellow Medicine

At the corner location shown on the sketch:

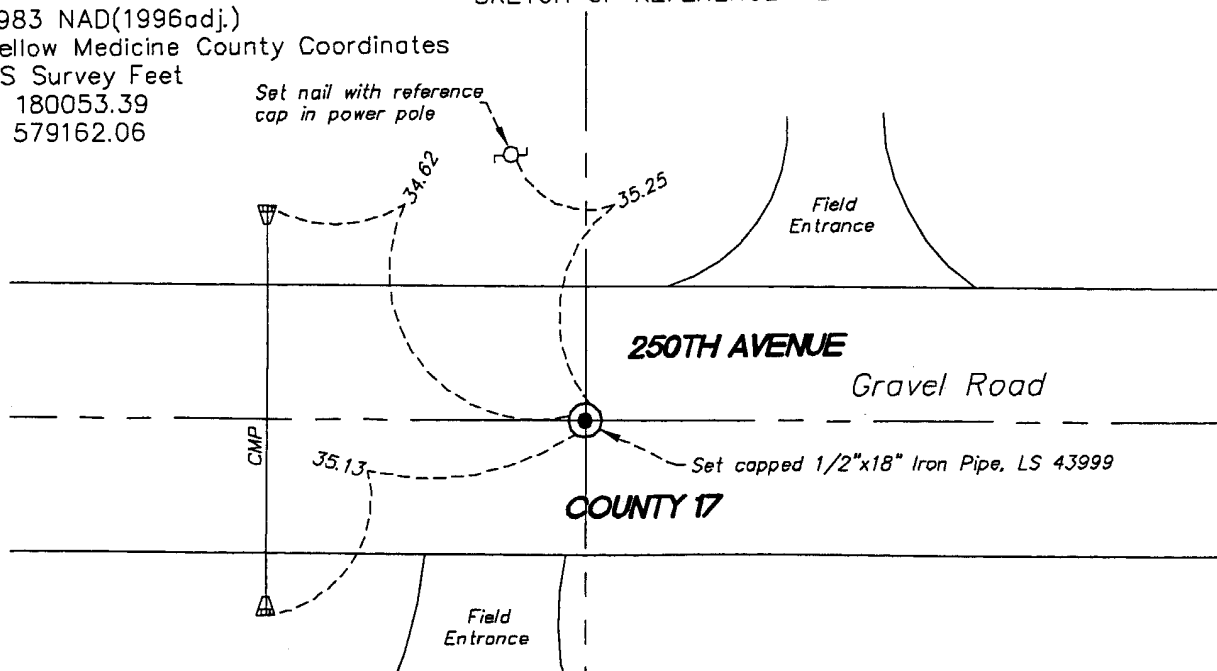
On 04/08/11 found a 1 1/2" and a 12"x12"x6" Granite Boulder, left as found
DATE

left monument as found lowered monument removed monument (explain)

On 04/08/11 placed a 1/2"x18" Iron pipe, cap #43999 over 1 1/2" Iron Pipe
DATE
and set three reference ties

SKETCH OF REFERENCE TIES

1983 NAD(1996adj.)
Yellow Medicine County Coordinates
US Survey Feet
N 180053.39
E 579162.06



Statement of evidence for this corner location is on back of this page.

I hereby certify that this document was researched and prepared by me or under my direct supervision and that I am a licensed Land Surveyor under the laws of the State of Minnesota.

Signature Robert H. Hualde

Date 04/27/11 License No. 43999

Title:

- Land Surveyor Professional Engineer
- County Surveyor County Engineer

OFFICE OF THE COUNTY RECORDER

County of _____

I hereby certify that this document was filed in the Co.

Records office at _____ M. on the _____ day of _____ A.D. 20____

County Recorder _____

by _____, Deputy

DOCUMENT NO. _____

STATEMENT OF EVIDENCE:

SOUTH QUARTER CORNER SECTION 18 T115N, R39W, 5TH PM

On April 08, 2011 Westwood Professional Services, Inc. dug a 9'X5' and 5.5' deep hole with a backhoe (Baker Brothers) and found a 1 1/2" iron pipe along with a 12"X12"x6" granite boulder, left as found. We set 1/2"X18" Iron pipe, cap number 43999 over 1 1/2" iron pipe, 0.5' below road grade along with three reference ties.

Doc# 252849 Fee: \$0.00 2 Pages
Office of County Recorder
Yellow Medicine County, Minnesota
I hereby certify that the within instrument
was filed on May 17, 2011 at 9:35 AM

Kay Zempel, Yellow Medicine County Recorder

By Delna Blood Deputy

N/C
WESTWOOD PROFESSIONAL SERVICES
ATTN: ROBERT HOULE, LS
7699 ANAGRAM DRIVE
EDEN PRAIRIE, MN 55344