

CERTIFICATE OF LOCATION OF GOVERNMENT CORNER

North Quarter _____ Corner of Section 18 , Township 115N , Range 39W

5th Principal Meridian, State of Minnesota, County of Yellow Medicine

At the corner location shown on the sketch:

On 04/08/11 found a found 5"X8"X14" & 5"X5"X10" stones both laying on side,
DATE
left as found

left monument as found lowered monument removed monument (explain)

On 04/08/11 placed a 1/2"X18" Iron pipe, cap #43999 at base of larger stone.
DATE
and set three reference ties

SKETCH OF REFERENCE TIES

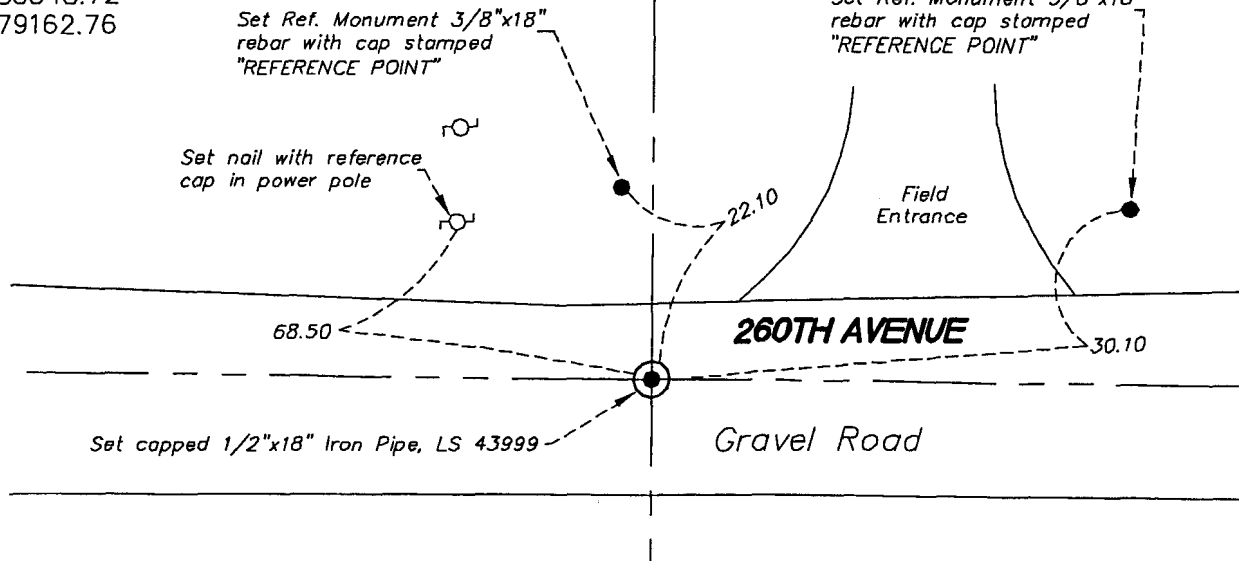
1983 NAD(1996adj.)

Yellow Medicine County Coordinates

US Survey Feet

N 185348.72

E 579162.76



N.T.S.

Statement of evidence for this corner location is on back of this page.

I hereby certify that this document was researched and prepared by me or under my direct supervision and that I am a licensed Land Surveyor under the laws of the State of Minnesota.

Signature *Robert H. Houck*

Date 04/12/11 License No. 43999

Title:

- Land Surveyor Professional Engineer
- County Surveyor County Engineer

OFFICE OF THE COUNTY RECORDER

County of _____

I hereby certify that this document was filed in the Co.

Records office at _____ M. on the _____ day of _____ A.D. 20 _____

County Recorder _____

by _____ Deputy

DOCUMENT NO. _____

STATEMENT OF EVIDENCE:

NORTH QUARTER CORNER SECTION 18 T115N, R39W, 5TH PM

On April 08, 2011 Westwood Professional Services, Inc. dug a 9'X9'X18" deep hole with a backhoe (Baker Brothers) and found 5"X8"X14" & 5"X5"X10" stones 1/2 foot deep, both laying on there side next to each other. We set 1/2"X18" Iron pipe, cap number 43999 at base of 5"X8"X14" stone, along with three reference ties. The iron is 2.3' south & 5.5' west of lost position and falls in the centerline of an E-W gravel road and fits field lines north & south.

Doc# 252850 Fee: \$0.00 2 Pages

Office of County Recorder
Yellow Medicine County, Minnesota
I hereby certify that the within instrument
was filed on May 17, 2011 at 9:40 AM

Kay Zempel, Yellow Medicine County Recorder

By Debra Blund Deputy

N/C

WESTWOOD PROFESSIONAL SERVICES
ATTN: ROBERT HOULE, LS
7699 ANAGRAM DRIVE
EDEN PRAIRIE, MN 55344