

CERTIFICATE OF LOCATION OF GOVERNMENT CORNER

West Quarter _____ Corner of Section 18, Township 115N, Range 39W

5th Principal Meridian, State of Minnesota, County of Yellow Medicine

At the corner location shown on the sketch:

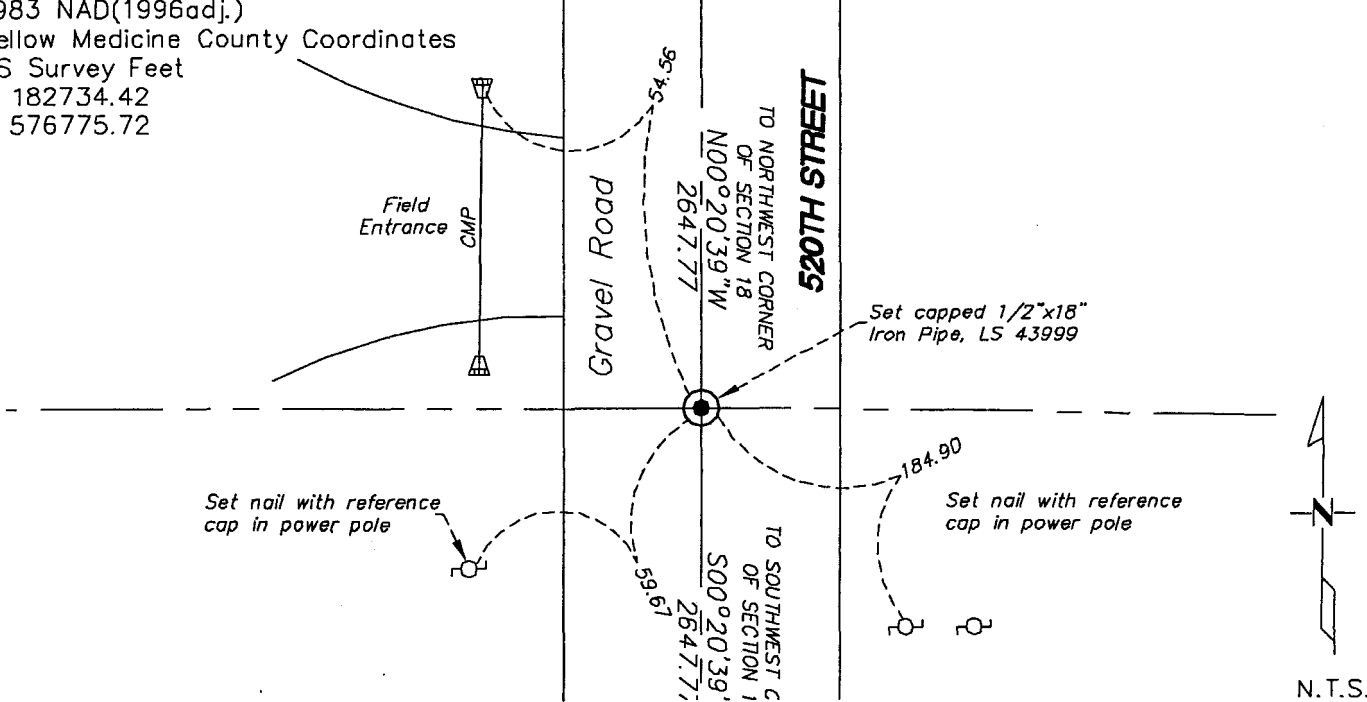
On 04/08/11 found a nothing
DATE

left monument as found lowered monument removed monument (explain)

On 04/08/11 placed a 1/2"x18" Iron pipe, cap #43999, and set three reference ties
DATE

1983 NAD(1996adj.)
 Yellow Medicine County Coordinates
 US Survey Feet
 N 182734.42
 E 576775.72

SKETCH OF REFERENCE TIES



Statement of evidence for this corner location is on back of this page.

I hereby certify that this document was researched and prepared by me or under my direct supervision and that I am a licensed Land Surveyor under the laws of the State of Minnesota.

Signature *Robert A. Hancock*

Date 04/27/11 License No. 43999

Title:

- Land Surveyor Professional Engineer
 County Surveyor County Engineer

OFFICE OF THE COUNTY RECORDER

County of _____

I hereby certify that this document was filed in the Co. Records office at _____ M. on the _____ day of _____ A.D. 20____
 County Recorder _____
 by _____, Deputy
 DOCUMENT NO. _____

STATEMENT OF EVIDENCE:

WEST QUARTER CORNER SECTION 18 T115N, R39W, 5TH PM

On April 08, 2011 Westwood Professional Services, Inc. dug a 8'X10' and 6.0' deep hole with a backhoe (Baker Brothers) and found nothing. We set 1/2"X18" Iron pipe, cap number 43999 at lost position, along with three reference ties.

Doc# 252851 Fee: \$0.00 2 Pages
Office of County Recorder
Yellow Medicine County, Minnesota
I hereby certify that the within instrument
was filed on May 17, 2011 at 9:45 AM

Kay Zempel, Yellow Medicine County Recorder

By Debra Blood Deputy

N/C

WESTWOOD PROFESSIONAL SERVICES
ATTN: ROBERT HOULE, LS
7699 ANAGRAM DRIVE
EDEN PRAIRIE, MN 55344