

CERTIFICATE OF LOCATION OF GOVERNMENT CORNER

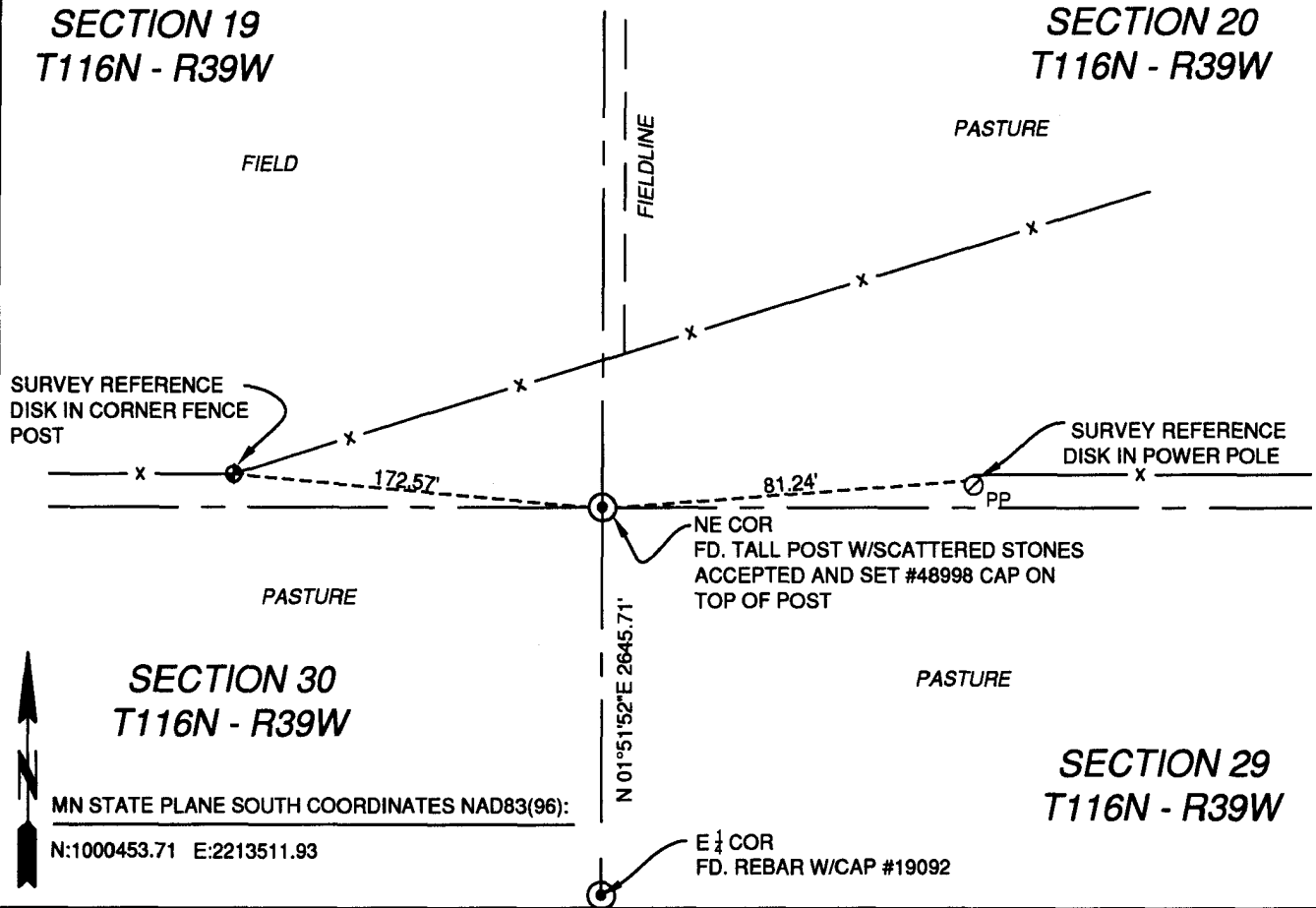
NE Corner of Section 30, Township 116, Range 39, 5TH P.M.

STATE OF MINNESOTA, County of YELLOW MEDICINE

At the corner location shown on the sketch:

- On 1-4-2012 found a TALL POST WITH SCATTERED STONES
- left monument as found, lowered monument, removed monument (explain)
- On 1-4-2012 placed a #48998 CAP ON TOP OF ACCEPTED POST

SKETCH OF REFERENCE TIES



Statement of evidence relative to this corner location is on back of page.

I hereby certify that this document and the data contained herein was prepared by me or under my direct supervision.

Eric Meyer
SIGNATURE

1/4/2012
DATE

Registration No. 48998

- Land Surveyor, Professional Engineer
- County Surveyor, County Engineer

OFFICE OF THE COUNTY RECORDER

County of _____

I hereby certify that this document was filed in the Co. Recorders office at _____ M. on the _____ day of _____ A.D., 20____

County Recorder _____

By _____, Deputy

DOCUMENT NO. _____

STATEMENT OF EVIDENCE

The Northeast Corner of Section 30, Township 116 North, Range 39 West of the 5th Principal Meridian.

U.S. General Land Office notes show corner marked a wood post in a mound with pits as per instructions. (1865)

In 1865, W.J. Neely established the lines of this township, as per the information on the copy of the original Township Plat as provided by the Register of Deeds. No other information exists was able to be found. Original notes were unable to be found.

On 1-4-12, a survey crew from Uteig Engineers found and accepted a tall post with scattered stones, placed a #48998 cap on top of the post, and set new ties as shown. Monument was accepted in a non-filed survey by Roy Marihart. Since no public record is available for this monument, it is the opinion of Uteig Engineers that the location of this monument correctly perpetuates the position of the original corner based upon local use and occupation, as well as corroborative evidence in the form of distances to adjacent corners.

Uteig Engineers contacted the following for survey information:

Yellow Medicine County Recorder's Office

Yellow Medicine County Highway Engineer's Office

Chippewa County Recorder's Office

Chippewa County Highway Engineer's Office

Marihart Land Surveying

K.B. MacKichan and Associates, Inc.

Bonnema Surveys of Willmar

West Central Land Services, Inc. of Willmar

N/C

Uteig

5701 S. Corporate Place

Sioux Falls SD 57108

Doc# 254403 Fee: \$0.00 2 Pages

Property & Public Services
Property Records Division
Yellow Medicine County, Minnesota

I hereby certify that the within instrument
was filed on January 13, 2012 at 9:50 AM

Janel Timm, Yellow Medicine County Recorder

By Delva Blood Deputy