

CERTIFICATE OF LOCATION OF GOVERNMENT CORNER

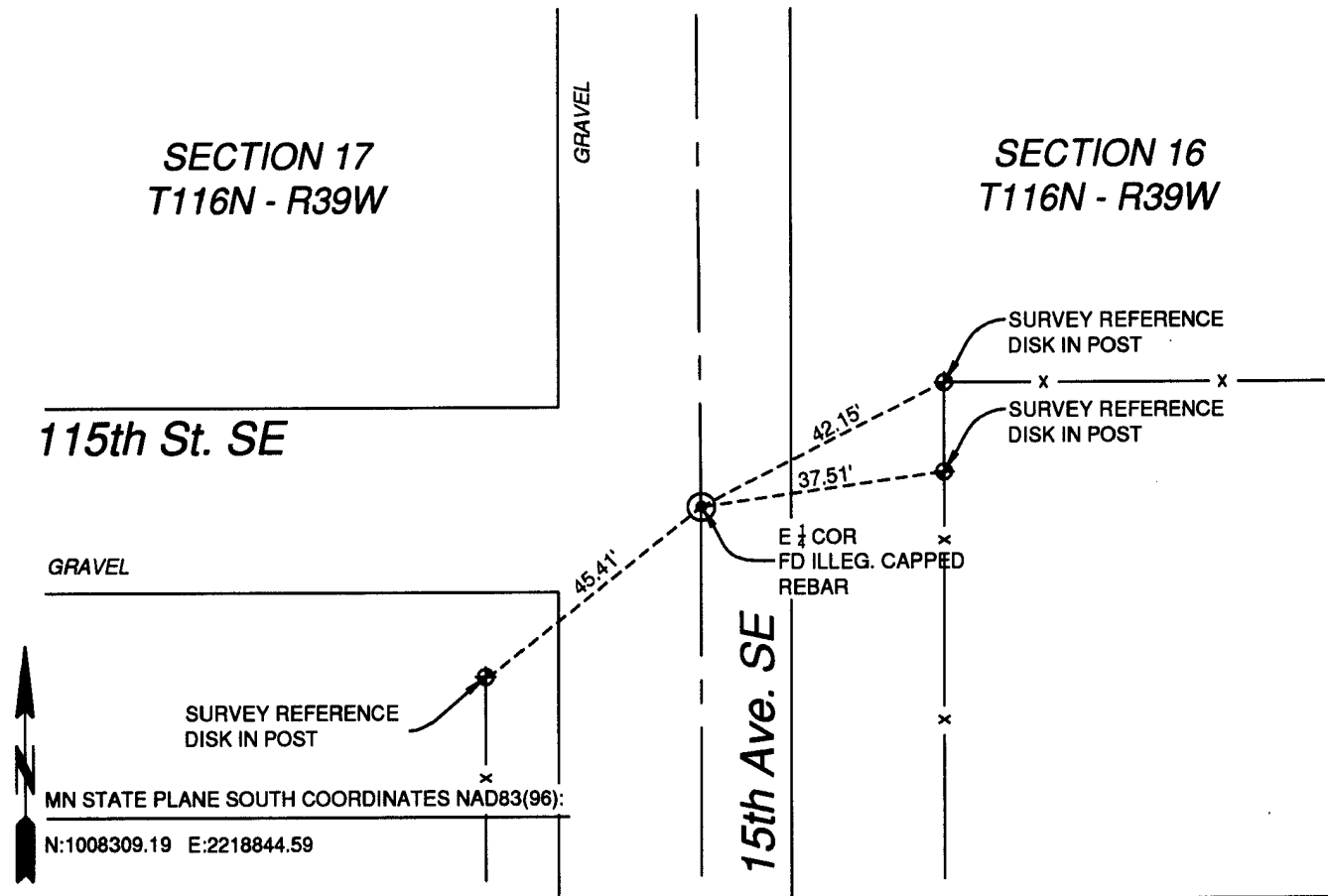
E 1/4 Corner of Section 17, Township 116, Range 39, 5TH P.M.

STATE OF MINNESOTA, County of CHIPPEWAH

At the corner location shown on the sketch:

- On 1-4-2012 found a ILLEGIBLE CAPPED REBAR 0.3' BELOW THE GRAVEL SURFACE
 left monument as found, lowered monument, removed monument (explain)
 On _____ placed a _____

SKETCH OF REFERENCE TIES



GRAVEL
 SECTION 17
 T116N - R39W
 115th St. SE
 GRAVEL
 SURVEY REFERENCE DISK IN POST
 MN STATE PLANE SOUTH COORDINATES NAD83(96):
 N:1008309.19 E:2218844.59

Statement of evidence relative to this corner location is on back of page.

I hereby certify that this document and the data contained herein was prepared by me or under my direct supervision.

[Signature] 1/4/2012
 SIGNATURE DATE

Registration No. 48998

- Land Surveyor, Professional Engineer
 County Surveyor, County Engineer

OFFICE OF THE COUNTY RECORDER

County of _____

I hereby certify that this document was filed in the Co. Recorders office at _____ M. on the _____ day of _____ A.D., 20____

County Recorder _____

By _____, Deputy

DOCUMENT NO. _____

STATEMENT OF EVIDENCE

The East Corner of Section 17, Township 116 North, Range 39 West of the 5th Principal Meridian.

U.S. General Land Office notes show corner marked a wood post in a mound with pits as per instructions. (1865)

In 1866, W.J. Neely and E.N. Darling established the lines of this township, as per the information on the copy of the original Township Plat as provided by the Register of Deeds. No other information exists was able to be found. Original notes were unable to be found.

On 1-4-12, a survey crew from Uteig Engineers found and accepted an illegible capped rebar, and set new ties as shown. Since no public record is available for this monument, it is the opinion of Uteig Engineers that the location of this monument correctly perpetuates the position of the original corner based upon local use and occupation, as well as corroborative evidence in the form of distances to adjacent corners.

Uteig Engineers contacted the following for survey information:

Yellow Medicine County Recorder's Office
Yellow Medicine County Highway Engineer's Office
Chippewa County Recorder's Office
Chippewa County Highway Engineer's Office
Marihart Land Surveying
K.B. MacKichan and Associates, Inc.
Bonnema Surveys of Willmar
West Central Land Services, Inc. of Willmar

N/C

Uteig
5701 S. Corporate Place
Sioux Falls SD 57108

Doc# 254406 Fee: \$0.00 2 Pages

Property & Public Services
Property Records Division
Yellow Medicine County, Minnesota

I hereby certify that the within instrument
was filed on January 13, 2012 at 10:05 AM

Janel Timm, Yellow Medicine County Recorder

By Debra Bland Deputy