

CERTIFICATE OF LOCATION OF GOVERNMENT CORNER

West Quarter _____ Corner of Section 30, Township 115 N, Range 46 W, 5th P.M.

STATE OF MINNESOTA, County of Yellow Medicine

At the corner location shown on the sketch:

- On _____ Found a _____
DATE _____
- left monument as found lowered monument removed monument (explain)
- On 3-28-2012 Placed a _____ The location of this point is in a creek and was not set
DATE _____

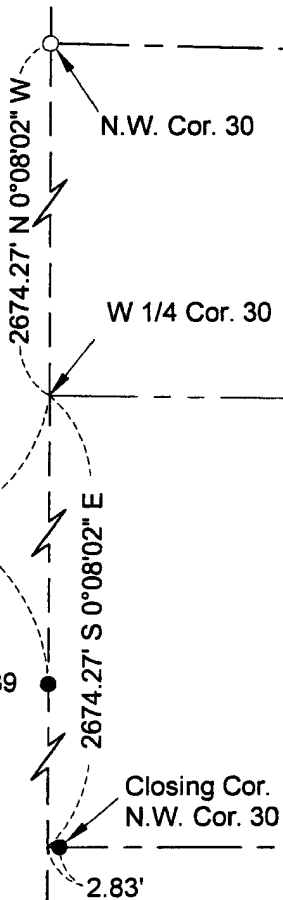


- Monument Recovered
- Monument Set 5/8" x 18" Capped
Rebar Marked R.L.S. 48124

NOTE: Bearings are Base on Assumed Datum

1688.97'
S 0°08'02" E

Mile Post 39



1983 YELLOW MEDICINE
COUNTY COORDINATES
(1996 ADJUSTMENT)
N=172836.0288
E=356697.4804

Statement of evidence to this corner location is on back of page

I hereby certify that this document and the data contained herein was prepared by me or under my direct supervision.

MIKE J. LAPKA
LICENSED LAND SURVEYOR
SIGNATURE _____ DATE 3/29/12
License Number 48124

- Land Surveyor Professional Engineer
 County Surveyor County Engineer

OFFICE OF COUNTY RECORDER

County of _____

I hereby certify that this document was filed in the County Recorders Office at _____ M. on the _____ day of _____ A.D., 20 _____

County Recorder _____

By _____ Deputy

DOCUMENT NO. _____

West Quarter Corner of Section 30, Township 115 North, Range 46 Wset of the 5th. PM

Civil Design Inc. contacted the following for survey information.

Minnesota Historical Society Library
Yellow Medicine County Recorders Office
Yellow Medicine County Highway Engineers Office

1871 US. General Land Office Notes, obtained from the Minnesota Historical Society Library, show that the corner was shown on the western boundary of the state, equal distance between the Southwest Corner of Section 30 and the Northwest Corner of Section 30.

2012 January 18 CDI searched for any evidence of an existing corner

2012 February 22, CDI contacted the Yellow Medicine County Highway Engineers Office and found no ties or any information for the location of corner.

2012 February 23 CDI computed the position for the corner using proportional measurements per the original GLO Notes of the 1871 survey of Section 30.

A) on line between found monument at the Southwest Corner of Section 30 and the Northwest Corner of Section 30.

B) proportional measurement per GLO distances from found monument at the Southwest Corner of Section 30 and the Northwest Corner of Section 30.

The computed position for corner was found to be:

2674.27 feet North of the Southwest Corner of Section 30
2674.27 feet South of the Northwest Corner of Section 30

Analysis of the above information led CDI to conclude the the computed position for the corner on line and proportional distances from found monument at the Southwest Corner of Section 30 and the Northwest Corner of Section 30. marks the location of the corner. The location of this point is in a creek and was not set

Doc# 254895 Fee: \$0.00 2 Pages

Property & Public Services
Property Records Division
Yellow Medicine County, Minnesota
I hereby certify that the within instrument
was filed on April 2, 2012 at 9:35 AM

N/C ~ Civil Design, Inc.
609 Main Ave. S.
Brookings, SD 57006

Janel Timm, Yellow Medicine County Recorder

By Debra Blood Deputy