

CERTIFICATE OF LOCATION OF GOVERNMENT CORNER

Northwest Corner of Section 30, Township 115 N, Range 46 W, 5th P.M.

STATE OF MINNESOTA, County of Yellow Medicine

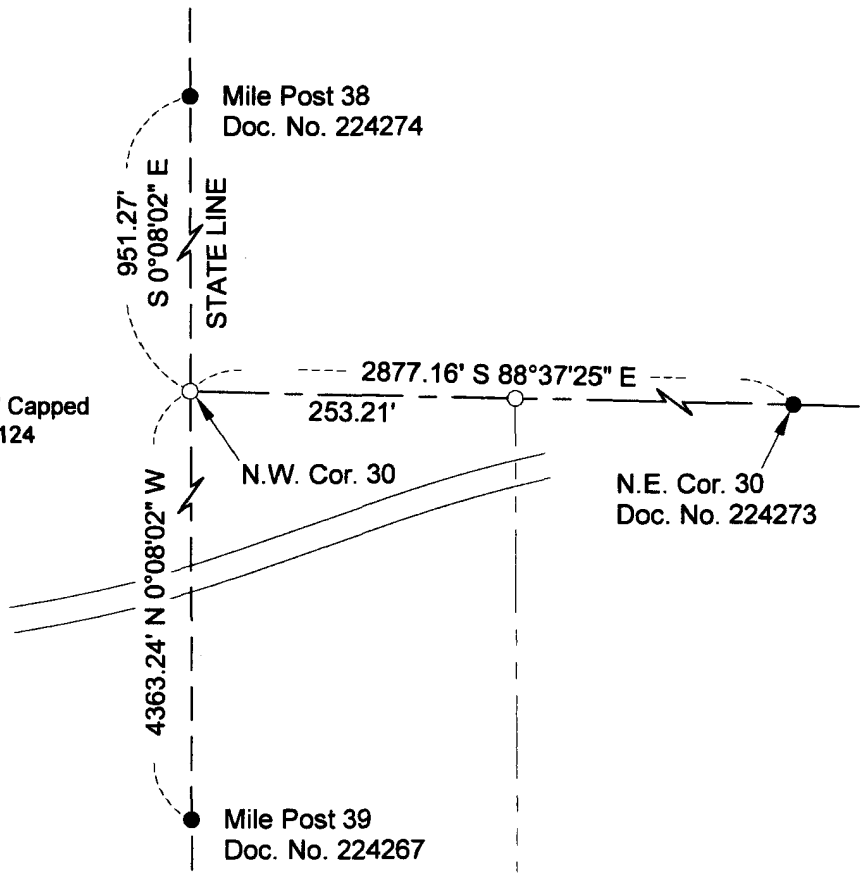
At the corner location shown on the sketch:

- On _____ Found a _____
DATE
- left monument as found lowered monument removed monument (explain)
- On 3-28-2012 Placed a 5/8" x 18" Rebar with Plastic Cap Stamped R.L.S. 48124, flush with ground
DATE



- Monument Recovered
- Monument Set 5/8" x 18" Capped Rebar Marked R.L.S. 48124

NOTE: Bearings are Base on Assumed Datum



1983 YELLOW MEDICINE COUNTY COORDINATES (1996 ADJUSTMENT)
N=175510.2671
E=356709.4450

Statement of evidence to this corner location is on back of page

I hereby certify that this document and the data contained herein was prepared by me or under my direct supervision.

Mike J. Larja

 LICENSED LAND SURVEYOR
 SIGNATURE
 License Number 48124
 DATE 3/29/12
 Land Surveyor Professional Engineer
 County Surveyor County Engineer

OFFICE OF COUNTY RECORDER

County of _____

I hereby certify that this document was filed in the County Recorders Office at _____ M. on the _____ day of _____ A.D., 20 _____

County Recorder _____

By _____ Deputy

DOCUMENT NO. _____

Northwest Corner of Section 30, Township 115 North, Range 46 West of the 5th. PM

Civil Design Inc. contacted the following for survey information.

Minnesota Historical Society Library
Yellow Medicine County Records Office
Yellow Medicine County Highway Engineers Office
Deuel County Register of Deeds Office

1871 US. General Land Office Notes, obtained from the Minnesota Historical Society Library, show that the corner was established on the western boundary of the state. The corner was marked with a wood post in a raised mound as per instructions. The corner is shown 13.89 chains (916.74 feet) South of Mile Post 38.

1901 Surveyor's Record Book B, obtained from the Yellow Medicine County Records Office, contains John Norgaard's, County Surveyor, remonumentation notes for section corners in Yellow Medicine County. The following information is stated about corner on page 223:

A) Located 5280 feet south of the northwest corner of Section 19 and on line with Mile Post 38 and monument for Dakota..

B) Set Jasper Monument 2 feet long and 6" x 6" on top.

1903 October 29, page 181 of a Surveyor's Record Book, obtained from the Yellow Medicine County Records Office contains a survey by John Norgaard, County Surveyor. Survey shows a Jasper Monument at corner but does not indicate if it was found or set.

2012 January 18 CDI searched for the Jasper Monument but was not found.

2012 February 22, CDI contacted the Yellow Medicine County Highway Engineers Office and found no ties or any information for the location of corner. (They had searched for the monument also but did not recover it.)

2012 February 23 CDI computed the lost position for the corner using proportional measurements per the 1902 resurvey of the Mile Posts abutting Deuel County and the original ties of the 1871 survey of Section 30.

A) Document No. 224268 (Certificate of Location of Government Corner) established Northwest Corner of Section 19.

B. Document No. 224275 (Certificate of Location of Government Corner) established Southwest Corner of Section 30..

C) Computed distance of West Line Section 19 = 79.60 chains (5253.60 feet)

D) Computed distance of West Line Section 30 = 80.43 chains (5308.38 feet)

E) Measured Distance between Northwest Corner of Section 19 and Southwest Corner of Section 30 = 10641.72 Feet.

Analysis of the above information led CDI to conclude the the computed lost position using proportional measurements per an 1902 resurvey of the Mile Posts abutting Deuel County and the original ties of the 1871 survey of Section 30, marked the location of the corner. Set a $\frac{5}{8}$ " x 18" rebar with plastic cap stamped R.L.S. 48124 on line with Mile Monuments, 5293.19 feet South of the Northwest Corner of Section 19 and 5348.53 feet North of the Southwest Corner of Section 30 at the computed lost position of the corner.

Doc# 254896 Fee: \$0.00 2 Pages

Property & Public Services
Property Records Division
Yellow Medicine County, Minnesota
I hereby certify that the within instrument
was filed on April 2, 2012 at 9:40 AM

N/C ~ Civil Design, Inc.
609 Main Ave. S.
Brookings, SD 57006

Janel Timm, Yellow Medicine County Recorder

By  Deputy