

# CERTIFICATE OF LOCATION OF GOVERNMENT CORNER

North Quarter \_\_\_\_\_ Corner of Section 30, Township 115 N, Range 46 W, 5th P.M.

STATE OF MINNESOTA, County of Yellow Medicine

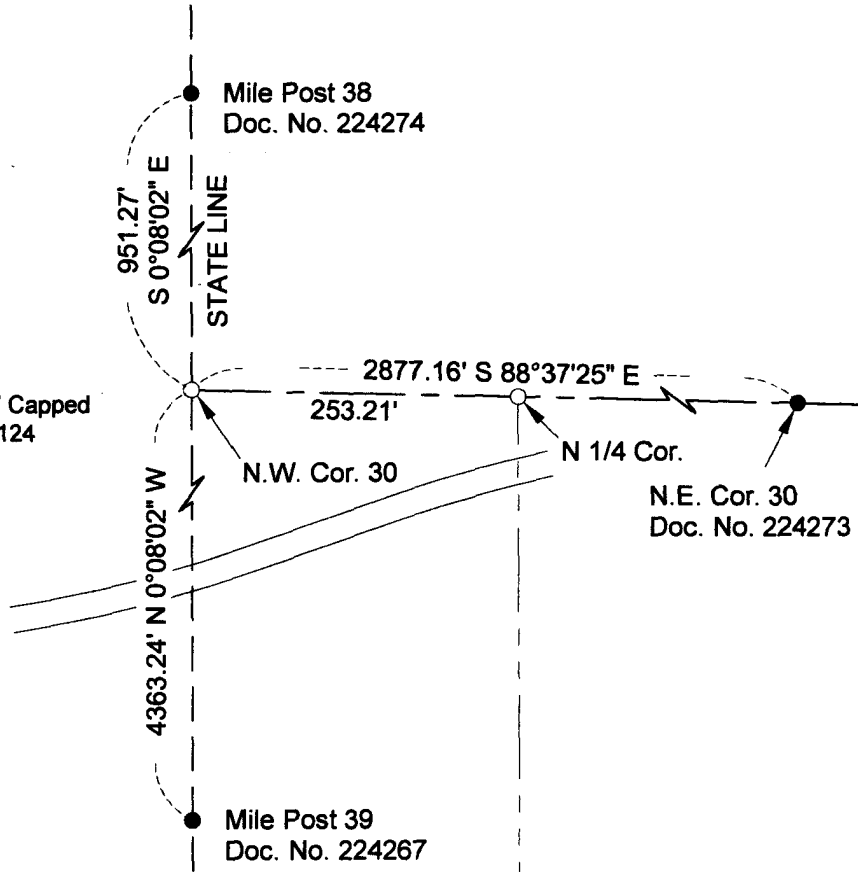
At the corner location shown on the sketch:

- On \_\_\_\_\_ Found a \_\_\_\_\_  
DATE
- left monument as found       lowered monument       removed monument (explain)
- On 3-28-2012 Placed a 5/8" x 18" Rebar with Plastic Cap Stamped R.L.S. 48124, flush with ground  
DATE



- Monument Recovered
- Monument Set 5/8" x 18" Capped Rebar Marked R.L.S. 48124

NOTE: Bearings are Base on Assumed Datum



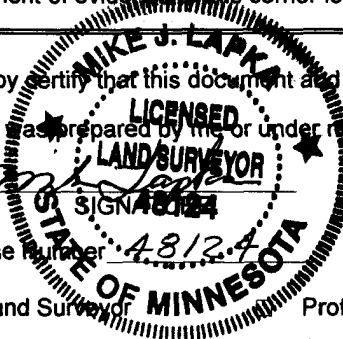
1983 YELLOW MEDICINE COUNTY COORDINATES (1996 ADJUSTMENT)  
N=175502.4646  
E=356962.4447

Statement of evidence to this corner location is on back of page

I hereby certify that this document and the data contained herein was prepared by me or under my direct supervision.

*Mike J. Lapka*  
SIGNATURE  
DATE 3/29/12  
License Number 48124

- Land Surveyor       Professional Engineer  
 County Surveyor       County Engineer



## OFFICE OF COUNTY RECORDER

County of \_\_\_\_\_

I hereby certify that this document was filed in the County Recorders Office at \_\_\_\_\_ M. on the \_\_\_\_\_ day of \_\_\_\_\_ A.D., 20 \_\_\_\_\_

County Recorder \_\_\_\_\_

By \_\_\_\_\_ Deputy

DOCUMENT NO. \_\_\_\_\_

**North Quarter Corner of Section 30, Township 115 North, Range 46 Wset of the 5th. PM**

Civil Design Inc. contacted the following for survey information.

Minnesota Historical Society Library  
Yellow Medicine County Recorders Office  
Yellow Medicine County Highway Engineers Office

**1871** US. General Land Office Notes, obtained from the Minnesota Historical Society Library, show that the corner was established on the western boundary of the state. The corner was marked with a wood post in a raised mound as per instructions. The corner is shown 40 chains (2640 feet) West of Northeast Corner of Section 30 and 3.86 Chains East of Northwest Corner of Section 30.

**1903** October 29, page 181 of a Surveyor's Record Book, obtained from the Yellow Medicine County Recorders Office contains a survey by John Norgaard, County Surveyor. Survey tells of a 2 x 2 stake set 254 feet East of the Northwest Corner of Section 30 which is called out as a Jasper Monument, and 2620 feet west of the Northeast Corner of Section 30 which is called out as a Jasper Monument.

**2012** January 18 CDI searched for the 2 x 2 stake but was not found.

**2012** February 22, CDI contacted the Yellow Medicine County Highway Engineers Office and found no ties or any information for the location of corner.

**2012** February 23 CDI computed the position for the corner using proportional measurements per the original GLO Notes of the 1871 survey of Section 30.

A) on line between found monument at the Northeast Corner of Section 30 and the Northwest Corner of Section 30.

B) proportional measurement per GLO distances from found monument at the Northeast Corner of Section 30 and the Northwest Corner of Section 30.

The computed position for corner was found to be:

2623.95 feet West of the Northeast Corner of Section 30  
253.21 feet East of the Northwest Corner of Section 30

Analysis of the above information led CDI to conclude the the computed position for the corner on line and proportional distances from found monument at the Northeast Corner of Section 30 and the Northwest Corner of Section 30. marks the location of the corner. Set a  $\frac{5}{8}$ " x 18" rebar with plastic cap stamped R.L.S. 48124 on the computed position of the corner.

**Doc# 254897 Fee: \$0.00 2 Pages**

Property & Public Services  
Property Records Division  
Yellow Medicine County, Minnesota  
I hereby certify that the within instrument  
was filed on April 2, 2012 at 9:45 AM

N/C ~ Civil Design, Inc.  
609 Main Ave. S.  
Brookings, SD 57006

Janel Timm, Yellow Medicine County Recorder

By  Deputy