

# CERTIFICATE OF LOCATION OF GOVERNMENT CORNER

NORTHEAST Corner of Section 18, Township 114, Range 42, 5TH P.M.

STATE OF MINNESOTA, County of YELLOW MEDICINE

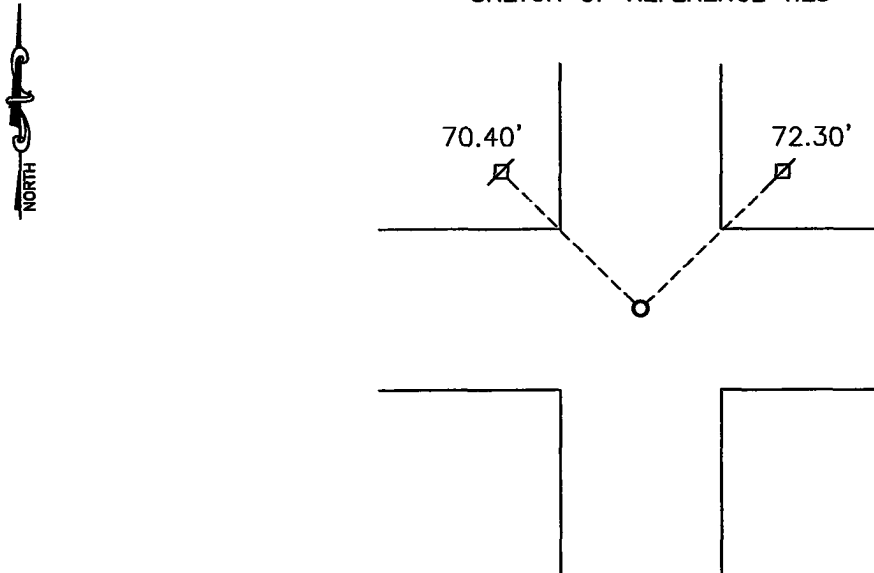
At the corner location shown on the sketch:

On \_\_\_\_\_ found a \_\_\_\_\_  
DATE

left monument as found,  lowered monument,  removed monument (explain)

On 07-17-2012 placed a 5/8" iron with seal #43844.  
DATE

SKETCH OF REFERENCE TIES



Minnesota State Plane Coordinate  
System Yellow Medicine County Datum  
NAD83 (1996)

N: 153698.301  
E: 486552.884

Nail and seal in utility pole NW 70.40'  
Nail and seal in utility pole NE 72.30'

Statement of evidence relative to this corner location is on back of page.

I hereby certify that this document and the data contained herein was prepared by me or under my direct supervision

*Samuel B. ...* SIGNATURE 2/18/13 DATE

Registration No. 43844

Land Surveyor,  Professional Engineer  
 County Surveyor,  County Engineer

OFFICE OF THE COUNTY RECORDER

County of \_\_\_\_\_

I hereby certify that this document was filed in the Co. Recorders office at \_\_\_\_\_ .M on the \_\_\_\_\_ day of \_\_\_\_\_ A.D. 20 \_\_\_\_\_

County Recorder \_\_\_\_\_

By \_\_\_\_\_, Deputy

DOCUMENT NO. \_\_\_\_\_

## Statement of Evidence

In 1867, David Watson did the original subdivision of the township.

On July 27, 1977, Moseng Land Surveying found a 3" metal circular plate on a 1" pipe along side a granite stone.

The Yellow Medicine Highway Department tied out the corner on the highway plans.

On July 17, 2012, Bueltel-Moseng Land Surveying set a  $\frac{5}{8}$ " iron with seal #43844 using the county highway plans. The stone was removed during a county construction project.

---

Doc# 257330 Fee: \$0.00 2 Pages  
Property & Public Services  
Property Records Division  
Yellow Medicine County, Minnesota  
I hereby certify that the within instrument  
was filed on March 22, 2013 at 10:15 AM

---

N/C  
Bueltel-Moseng Land Surveying  
PO Box 32  
Marshall, MN 56258

Janel Timm, Yellow Medicine County Recorder  
By Debra Blood Deputy