

# CERTIFICATE OF LOCATION OF GOVERNMENT CORNER

SOUTH QUARTER Corner of Section 34, Township 114, Range 43, 5TH P.M.

STATE OF MINNESOTA, County of YELLOW MEDICINE

At the corner location shown on the sketch:

On \_\_\_\_\_ found a \_\_\_\_\_  
DATE

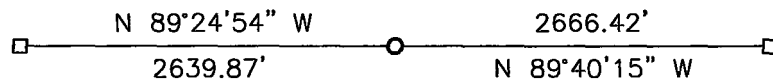
left monument as found,  lowered monument,  removed monument (explain)

On 11-13-2012 placed a cast iron monument.  
DATE

### SKETCH OF REFERENCE TIES



X  
X  
X  
X



Minnesota State Plane Coordinate  
System Yellow Medicine County Datum  
NAD83 (1996)

N: 132304.914  
E: 468092.753

Statement of evidence relative to this corner location is on back of page.

I hereby certify that this document and the data contained herein was prepared by me or under my direct supervision

  
SIGNATURE 2/4/13  
DATE

Registration No. 43844

Land Surveyor,  Professional Engineer  
 County Surveyor,  County Engineer

OFFICE OF THE COUNTY RECORDER

County of \_\_\_\_\_

I hereby certify that this document was filed in the Co. Recorders office at \_\_\_\_\_ .M on the \_\_\_\_\_ day of \_\_\_\_\_ A.D. 20 \_\_\_\_\_

County Recorder \_\_\_\_\_

By \_\_\_\_\_, Deputy

DOCUMENT NO. \_\_\_\_\_

## Statement of Evidence

In 1858, W. J. Neely did the original survey of the north line of the township.

On November 13, 2012, Bueltel-Moseng Land Surveying dug with a backhoe and found nothing. We set a cast iron monument in line with the fence to the north and 33' south of the old wooden corner fence post. The corner fell 1' south of the center of the road.

**Doc# 257331 Fee: \$0.00 2 Pages**

**Property & Public Services  
Property Records Division  
Yellow Medicine County, Minnesota  
I hereby certify that the within instrument  
was filed on March 22, 2013 at 10:20 AM**

N/C

Bueltel-Moseng Land Surveying  
PO Box 32  
Marshall, MN 56258

Janel Timm, Yellow Medicine County Recorder

By Debra Blood Deputy