

CERTIFICATE OF LOCATION OF GOVERNMENT CORNER

EAST QUARTER Corner of Section 17, Township 114, Range 45, 5TH P.M.

STATE OF MINNESOTA, County of YELLOW MEDICINE

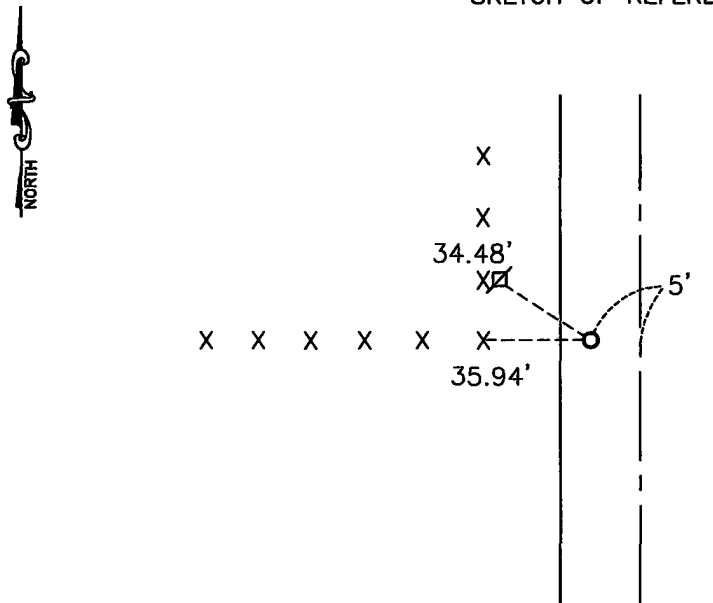
At the corner location shown on the sketch:

On 06-22-2012 found a 1" pipe.

left monument as found, lowered monument, removed monument (explain)

On _____ placed a _____

SKETCH OF REFERENCE TIES



Minnesota State Plane Coordinate
System Yellow Medicine County Datum
NAD83 (1996)
N: 151253.746
E: 396712.751

Nail and seal in utility pole NW 34.48'
Nail and seal in corner fence post West 35.94'

Statement of evidence relative to this corner location is on back of page.

I hereby certify that this document and the data contained herein was prepared by me or under my direct supervision.

[Signature] 2/18/13
SIGNATURE DATE

Registration No. 43844

Land Surveyor, Professional Engineer
 County Surveyor, County Engineer

OFFICE OF THE COUNTY RECORDER

County of _____

I hereby certify that this document was filed in the Co. Recorders office at _____ .M on the _____ day of _____ A.D. 20 _____

County Recorder _____

By _____, Deputy

DOCUMENT NO. _____

Statement of Evidence

In 1871, L. Harrington did the original subdivision of the township.

On June 22, 2012, Bueltel-Moseng Land Surveying found a 1" pipe on a minimum maintenance road. It is 5' west of the center of the road and in line with the fence to the west.

Doc# 257332 Fee: \$0.00 2 Pages
Property & Public Services
Property Records Division
Yellow Medicine County, Minnesota
I hereby certify that the within instrument
was filed on March 22, 2013 at 10:25 AM

N/C
Bueltel-Moseng Land Surveying
PO Box 32
Marshall, MN 56258

Janel Timm, Yellow Medicine County Recorder

By Debra Blund Deputy