

# CERTIFICATE OF LOCATION OF GOVERNMENT CORNER

NORTH QUARTER Corner of Section 20, Township 114, Range 45, 5TH P.M.

STATE OF MINNESOTA, County of YELLOW MEDICINE

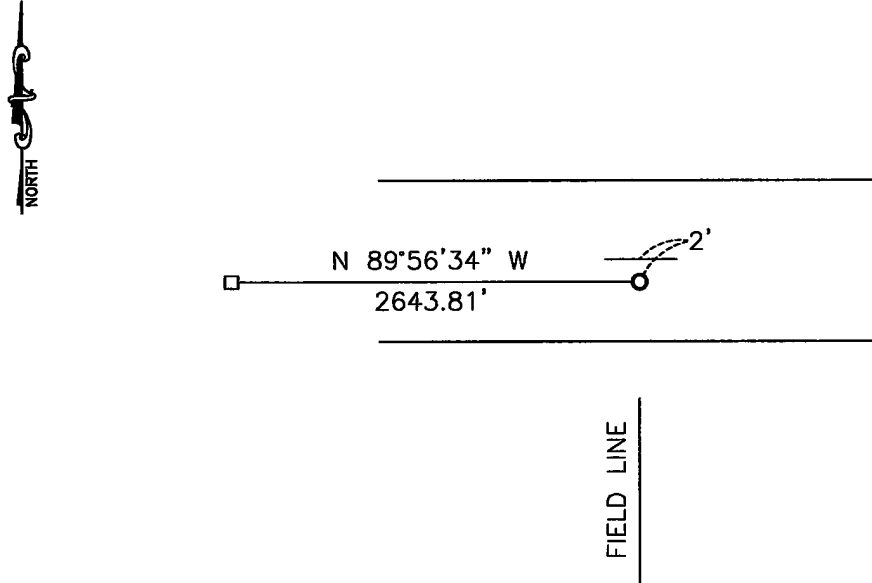
At the corner location shown on the sketch:

On 06-22-2012 found a 3/4" pipe.  
DATE

left monument as found,  lowered monument,  removed monument (explain)

On \_\_\_\_\_ placed a \_\_\_\_\_  
DATE

### SKETCH OF REFERENCE TIES



Minnesota State Plane Coordinate  
System Yellow Medicine County Datum  
NAD83 (1996)  
N: 148616.660  
E: 394074.195

Statement of evidence relative to this corner location is on back of page.

I hereby certify that this document and the data contained herein was prepared by me or under my direct supervision.

*[Signature]* 2/18/13  
SIGNATURE DATE

Registration No. 43844

Land Surveyor,  Professional Engineer  
 County Surveyor,  County Engineer

**OFFICE OF THE COUNTY RECORDER**

County of \_\_\_\_\_

I hereby certify that this document was filed in the Co. Recorders office at \_\_\_\_\_ .M on the \_\_\_\_\_ day of \_\_\_\_\_ A.D. 20 \_\_\_\_\_

County Recorder \_\_\_\_\_

By \_\_\_\_\_, Deputy

DOCUMENT NO. \_\_\_\_\_

Statement of Evidence

In 1871, L. Harrington did the original subdivision of the township.

On June 22, 2012, Bueltel-Moseng Land Surveying found a  $\frac{3}{4}$ " pipe 2' south of the center of the road and in line with the field line to the south.

**Doc# 257334 Fee: \$0.00 2 Pages**  
**Property & Public Services**  
**Property Records Division**  
**Yellow Medicine County, Minnesota**  
I hereby certify that the within instrument  
was filed on March 22, 2013 at 10:35 AM

---

N/C  
Bueltel-Moseng Land Surveying  
PO Box 32  
Marshall, MN 56258

Janel Timm, Yellow Medicine County Recorder  
By Debra Bland Deputy