

CERTIFICATE OF LOCATION OF GOVERNMENT CORNER

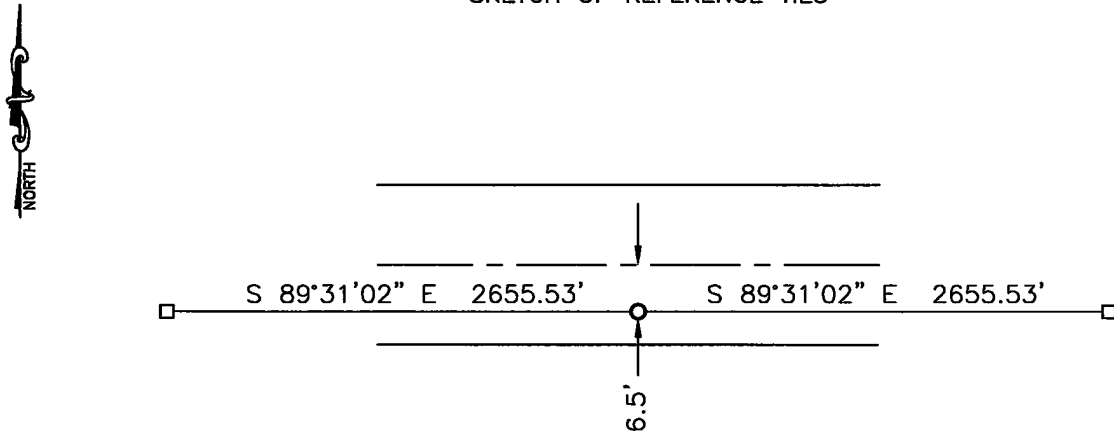
NORTH QUARTER Corner of Section 10, Township 115, Range 41, 5TH P.M.

STATE OF MINNESOTA, County of YELLOW MEDICINE

At the corner location shown on the sketch:

- On _____ found a _____
DATE
- left monument as found, lowered monument, removed monument (explain)
- On 08-02-2012 placed a survey spike with seal #43844.
DATE

SKETCH OF REFERENCE TIES



Minnesota State Plane Coordinate
 System Yellow Medicine County Datum
 NAD83 (1996)
 N: 190782.485
 E: 531729.085

Statement of evidence relative to this corner location is on back of page.

I hereby certify that this document and the data contained herein was prepared by me or under my direct supervision.

SIGNATURE

2/18/13

DATE

Registration No. 43844

Land Surveyor, Professional Engineer
 County Surveyor, County Engineer

OFFICE OF THE COUNTY RECORDER

County of _____

I hereby certify that this document was filed in the Co. Recorders office at _____ .M on the _____ day of _____ A.D. 20 _____

County Recorder _____

By _____, Deputy

DOCUMENT NO. _____

Statement of Evidence

In 1864, Chas. E. Davis and J. W. Webb, Jr. did the original subdivision of the township.

On August 2, 2012, Bueltel-Moseng Land Surveying set a survey spike with seal #43844 midway and on line between the section corners. It is 6.5' south of the centerline of Minnesota Trunk Highway No. 67.

Doc# 257335 Fee: \$0.00 2 Pages

**Property & Public Services
Property Records Division
Yellow Medicine County, Minnesota
I hereby certify that the within instrument
was filed on March 22, 2013 at 10:40 AM**

N/C

Bueltel-Moseng Land Surveying
PO Box 32
Marshall, MN 56258

Janel Timm, Yellow Medicine County Recorder

By Debra Blood Deputy