

Property & Public Services
Property Records Division
Yellow Medicine County, Minnesota
I hereby certify that the within instrument
was filed on April 30, 2013 at 9:55 AM

Janel Timm, Yellow Medicine County Recorder

By Debra Blood Deputy

N/C
BONNEMA SURVEYS INC
PROFESSIONAL LAND SURVEYING
1809 22ND STREET SW, SUITE 104
WILLMAR, MN 56201

CERTIFICATE OF LOCATION OF GOVERNMENT CORNER

Northeast Corner of Section **29**, Township **114**, Range **44**

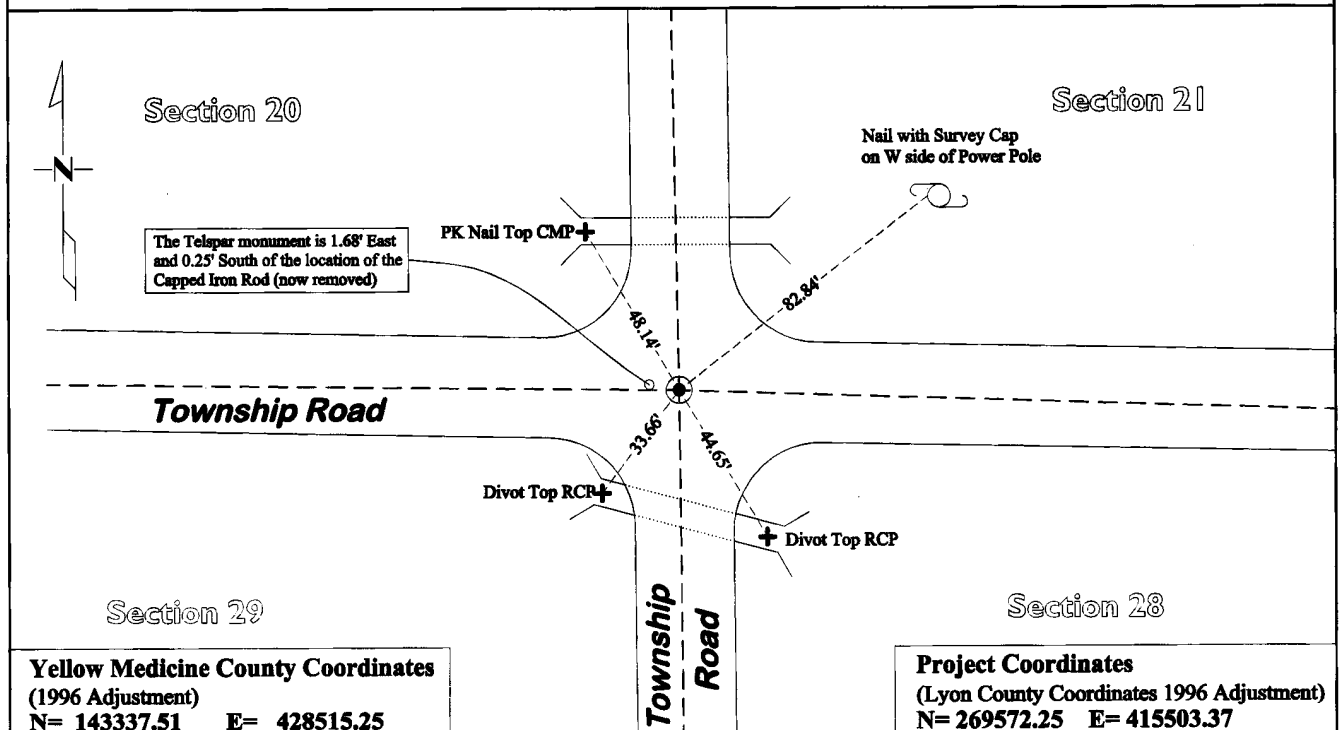
Fifth Principal Meridian, State of Minnesota, County of **Yellow Medicine**

At the corner location shown on the sketch:

On July 16, 2012 found a Capped Iron Rod 0.2' Below Road Surface RLS# 19092 with 7" by 7" Quarried Jasper Stone at a depth of 4.2' Below Surface and Charred Wood Stake Next to Stone

left monument as found lowered monument removed monument (explain)

On Aug. 7, 2012 placed a Cast Iron Capped 2" by 30" Telspar Monument at the location of the found 7" x 7" Jasper Stone



Yellow Medicine County Coordinates
(1996 Adjustment)
N= 143337.51 E= 428515.25

Project Coordinates
(Lyon County Coordinates 1996 Adjustment)
N= 269572.25 E= 415503.37

Statement of evidence for this corner location is on back of this page.

I hereby certify that this survey, plan, or report was prepared by me or under my direct supervision and that I am a duly Licensed Land Surveyor under the laws of the state of Minnesota.

Signature [Signature]
Date 4/29/2013

Typed or Printed Name: Duane A. Bonnema
Reg. No. 14895

STATEMENT OF EVIDENCE

Northeast Corner Section 29, T114N-R44W

- 1871 L. Harrington was contracted by the United States Government Land Office to perform the Original Public Land Survey in this township. He records in his field notes, "Set a post for the corner to sections 20, 21, 28 & 29 raised mound as per instructions."
- 1899-1901 John Norgaard, County Surveyor, records in County Surveyor's Record Book B, Pg 188, at the NE corner of section 29 he "Found stake in the government mound. Set top of monument 5" above ground."
- 1899-1901 John Norgaard, County Surveyor, records in County Surveyor's Record Book B, Pg 39, that he measured to the corner while doing a re-survey of section corners across the county at the request of the Co. Board.
- July 11, 1910 John Norgaard, County Surveyor, records in County Surveyor's Record Book, Pg 220, that he used this corner to position the W $\frac{1}{4}$ corner of Section 28 as part of his survey and dimensions to this corner position.
- 1926 John Norgaard, County Surveyor, records in County Surveyor's Record Book, Pg 493, dimensions to this corner position and establishes 2 section corner witness ties.
- July 10, 1962 The Yellow Medicine County Hwy Dept corner tie book for Wergeland Twp shows that they recorded 5 witness ties to the corner. They further note, "Iron pipe in place" and "located iron pin 3' deep."
- March-April, 2010 Gary L. Kratz, Regional Land Surveyor for the United States Fish and Wildlife Service, while performing work in the SE $\frac{1}{4}$ of Section 20, states in his field notes found 5/8" rebar w/cap RLS # 19092 down 6" and dimensions to this corner. He also prepared a Section Breakdown sheet for Section 20.
- July 17, 2012 Duane A. Bonnema, LS 14895, while doing a re-monumentation survey for the Minnesota Department of Transportation excavated a 6.7' deep hole that covered an area extending 4.0' North, 3.0' South, 2.0' East, 3.5' West of the corner location. The Jasper Stone was found at a depth of 4.2' at the level of the original top soil. A 7"x7" Quarried Red Jasper Stone has the remnants of a charred wood stake lying alongside of it, which are evidently remnants of the stake noted by Norgaard in 1899 - 1901. Norgaard's early work ties the current section corner location all the way back to the U.S. Government Land Office monument placed in 1871. A Cast Iron capped 2"x30" Telspar Monument was placed at the surface at the position of the found 7"x7" Quarried Jasper Stone. Said telspar monument lies 0.25' south and 1.68' east of the found Capped Iron Rod RLS # 19092 (now removed). I find it interesting that in 1926 John Norgaard, an excellent surveyor could not find the Quarried Stone he used 16 years earlier and placed by him 27 years earlier even using the aid of the "Road Eng. Ties". In today's surveying world we would spend our lives in a similar situation, however with the assistance of measurement, study, plus a MnDOT backhoe crew; we were able to recover the evidence of the true Section Corner Location.