

Property & Public Services  
Property Records Division  
Yellow Medicine County, Minnesota  
I hereby certify that the within instrument  
was filed on April 30, 2013 at 10:00 AM

Janel Timm, Yellow Medicine County Recorder

By Debra Blood Deputy

N/C  
BONNEMA SURVEYS INC  
PROFESSIONAL LAND SURVEYING  
1809 22ND STREET SW, SUITE 104  
WILLMAR, MN 56201

### CERTIFICATE OF LOCATION OF GOVERNMENT CORNER

**East Quarter** Corner of Section **29**, Township **114**, Range **44**

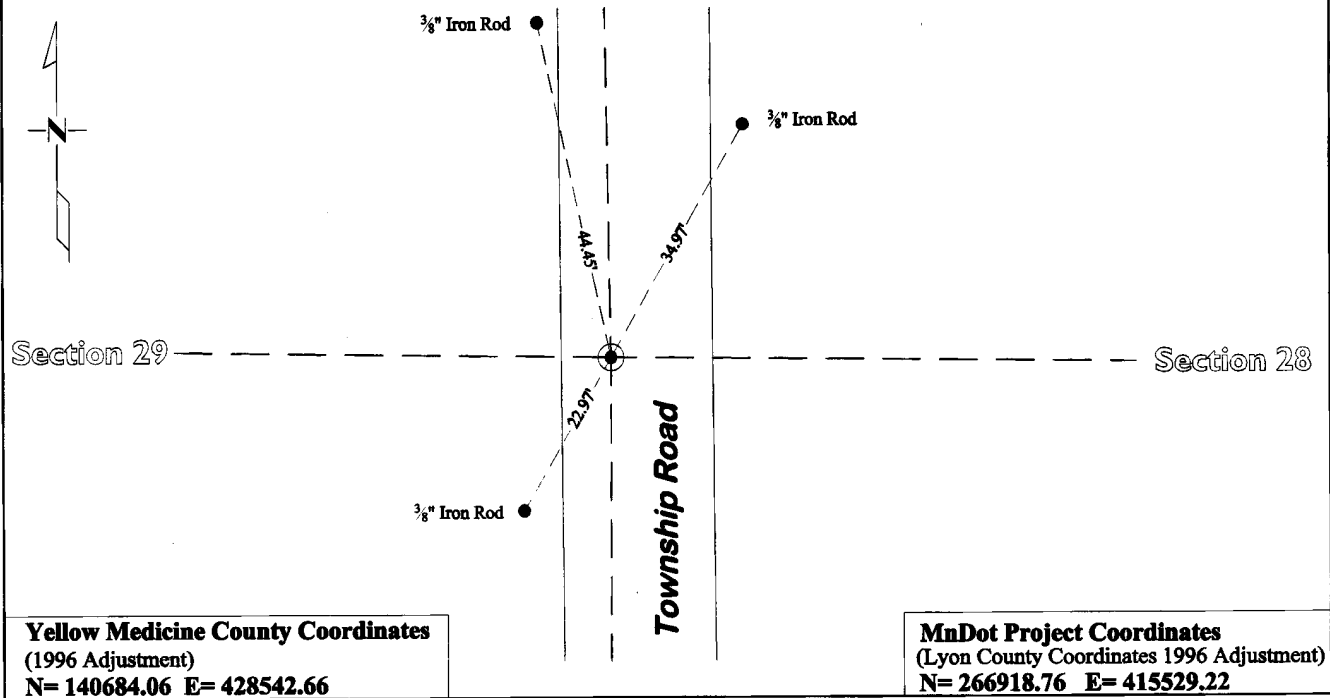
**Fifth** Principal Meridian, State of Minnesota, County of **Yellow Medicine**

At the corner location shown on the sketch:

On July 17, 2012 found a 7"x10"x14" Stone with small traces of wood on side of stone at a depth  
DATE of 1.5' below surface

left monument as found  lowered monument  removed monument (explain)

On Aug. 7, 2012 placed a Cast Iron Capped 2" by 30" Telspar Monument at the location of the  
DATE 7" x 10" x 14" Stone



Statement of evidence for this corner location is on back of this page.

I hereby certify that this survey, plan, or report was prepared by me or under my direct supervision and that I am a duly Licensed Land Surveyor under the laws of the state of Minnesota.

Signature [Signature]  
Date 4/29/2013

Typed or Printed Name: Duane A. Bonnema  
Reg. No. 14895

# **STATEMENT OF EVIDENCE**

---

## **East Quarter Corner Section 29, T114N-R44W**

1871

L. Harrington was contracted by the United States Government Land Office to perform the Original Public Land Survey in this township. He records in his field notes "Set a post for 1/4 sec cor and raised mound as per instructions."

July 11, 1910

John Norgaard, County Surveyor, records in County Surveyor's Record Book, Pg 220 "Set a stone on line and equal distance between Section Corners" Norgaard does not indicate any description of the "Stone" that he set.

July 17, 2012

Duane A. Bonnema, LS 14895, while doing a re-monumentation survey for the Minnesota Department of Transportation, dug a 3' deep hole that covered an area extending 10.0' North, 4.0' South, 5.0' East, and 3.0' West of this section corner position. A 7"x10"x14" Granite stone with small traces of wood alongside was found in the original topsoil at a depth of 1.7 feet below the surface. The stone had been tipped on its side. Apparently this stone is the stone set by Norgaard in 1910. A large area was excavated around Norgaard's "on-line and equal distance" position and this was the only stone we uncovered. The stone had a pointed end, which is typical of a stone used to mark a section corner location. A Cast Iron capped 2"x30" Telspar Monument was placed at the location of the 7"x10"x14" stone.