

Property & Public Services  
Property Records Division  
Yellow Medicine County, Minnesota  
I hereby certify that the within instrument  
was filed on April 30, 2013 at 10:05 AM

Janel Timm, Yellow Medicine County Recorder

By Debra Blood Deputy

N/C  
BONNEMA SURVEYS INC  
PROFESSIONAL LAND SURVEYING  
1809 22ND STREET SW, SUITE 104  
WILLMAR, MN 56201

# CERTIFICATE OF LOCATION OF GOVERNMENT CORNER

**North Quarter** Corner of Section **30**, Township **114**, Range **44**

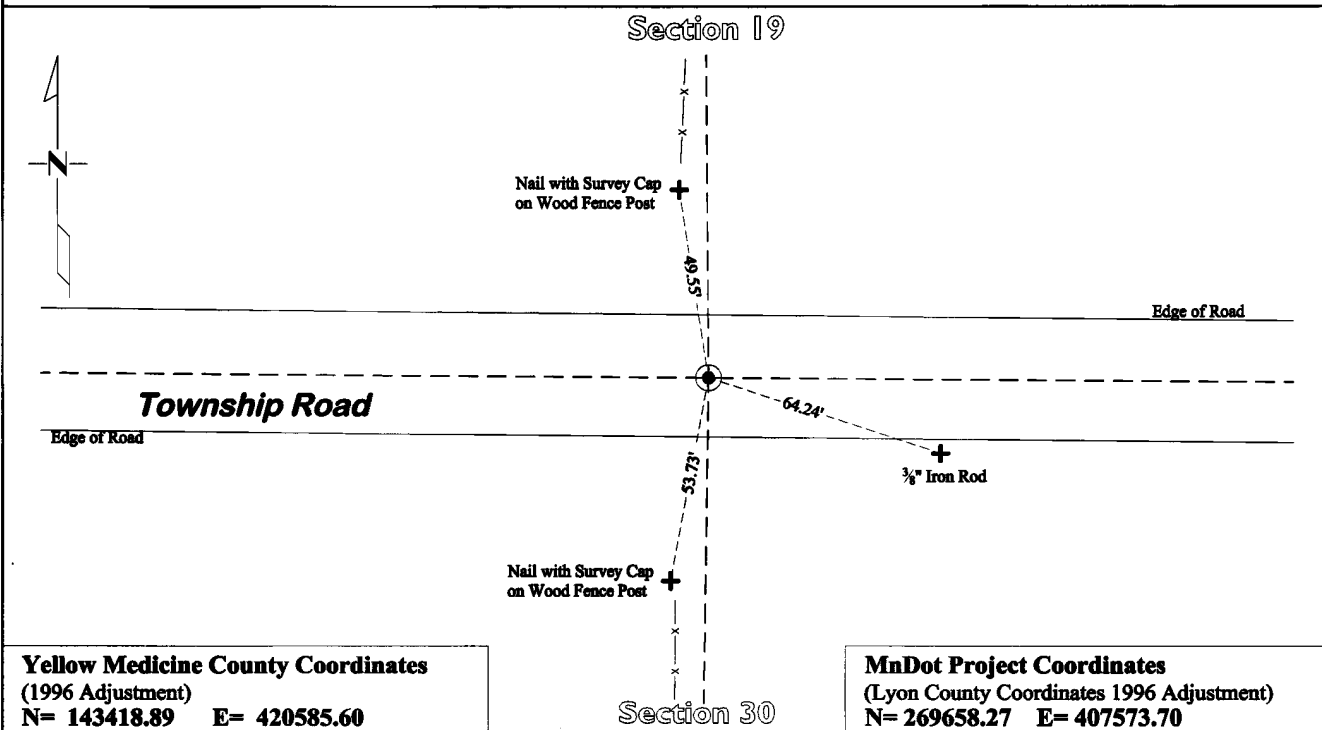
**Fifth** Principal Meridian, State of Minnesota, County of **Yellow Medicine**

At the corner location shown on the sketch:

On July 30, 2012 found a Axle Shaft 2.3' Below Road Surface  
DATE

left monument as found       lowered monument       removed monument (explain)

On Jan 11, 2013 placed a Cast Iron Capped 2" by 30" Square Telspar Monument  
DATE  
at the Location of the Found Axle Shaft



**Yellow Medicine County Coordinates**  
(1996 Adjustment)  
N= 143418.89 E= 420585.60

**MnDot Project Coordinates**  
(Lyon County Coordinates 1996 Adjustment)  
N= 269658.27 E= 407573.70

Statement of evidence for this corner location is on back of this page.

I hereby certify that this survey, plan, or report was prepared by me or under my direct supervision and that I am a duly Licensed Land Surveyor under the laws of the state of Minnesota.

Signature Debra Blood  
Date 1/29/2013

Typed or Printed Name: Duane A. Bonnema  
Reg. No. 14895

# STATEMENT OF EVIDENCE

---

## North Quarter Corner Section 30, T114N-R44W

- 1871 L. Harrington was contracted by the United States Government Land Office to perform the Original Public Land Survey in this township. He records in his field notes, "Set a post for 1/4 Sec Cor raised mound as per instructions."
- 1951 MnDOT SP 8709 & SP 4106 Alignment & Land Ties Field Book # 2, Pg 2-10, notes "1/4 cor assumed at int of RD. E&W and Fen N&S."
- June 1952 MnDOT State Project No. 8709-02 & 4106-6 Between Canby and 1 Mi W of Taunton, Sheet No. 8 shows a dimension from the center line of highway to the 1/4 section corner, but does not mention what type of monument was found.
- July 30, 2012 Duane A. Bonnema, LS 14895, while doing a re-monumentation survey for the Minnesota Department of Transportation, dug a 4' deep hole that covered an area extending 2.5' North, 4.5' South, 2.5' East, and 14.0' West of a straight line proration location along the north side of the Section. At a depth of 2.3' he found an axle hub and shaft lying on its side. The axle shaft was found at the same depth as the top of original topsoil. The axle may have been set as the corner monument and was later knocked over in road construction. The location of the Axle Shaft is right on the Government Proration across the North line of this Section. A Cast Iron capped 2"x30" Telspar Monument was placed at the location of the Axle Shaft.