

Property & Public Services
Property Records Division
Yellow Medicine County, Minnesota
I hereby certify that the within instrument
was filed on April 30, 2013 at 10:20 AM

Janel Timm, Yellow Medicine County Recorder

By Debra Blood Deputy

N/C
BONNEMA SURVEYS INC
PROFESSIONAL LAND SURVEYING
1809 22ND STREET SW, SUITE 104
WILLMAR, MN 56201

CERTIFICATE OF LOCATION OF GOVERNMENT CORNER

North Quarter Corner of Section **32**, Township **114**, Range **44**

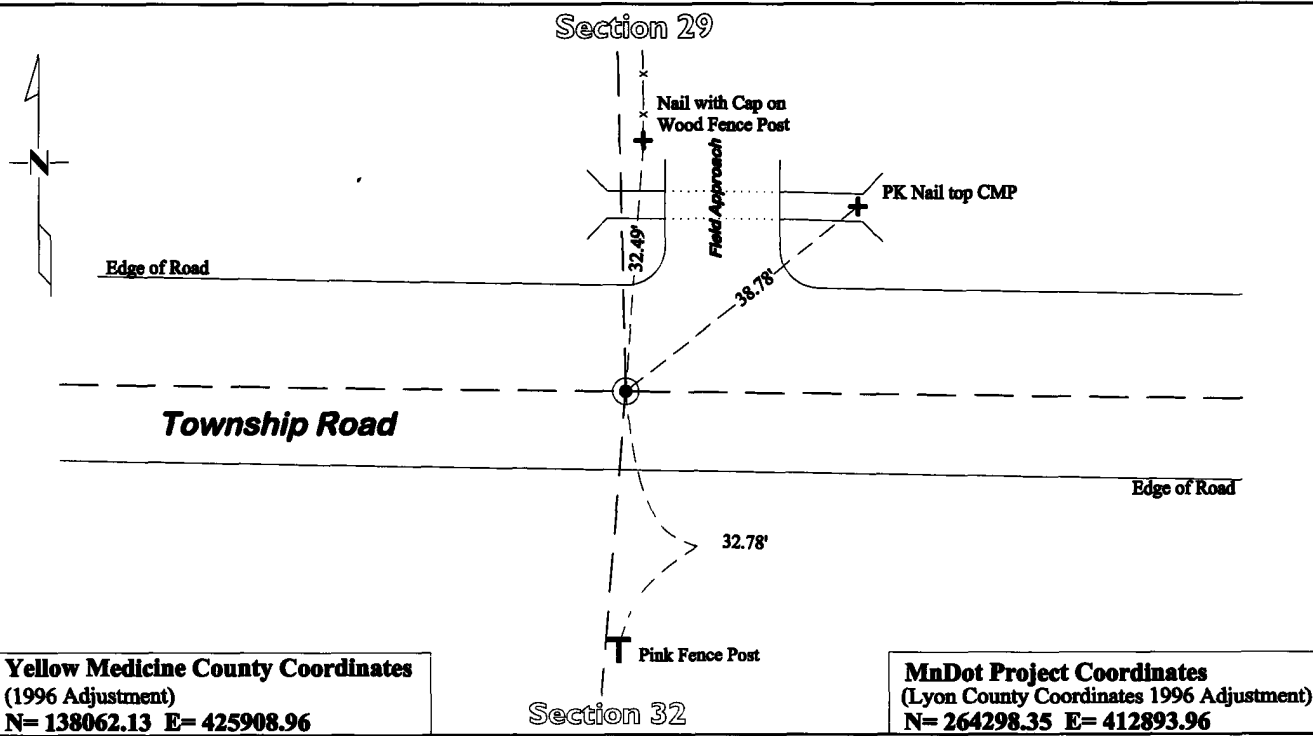
Fifth Principal Meridian, State of Minnesota, County of **Yellow Medicine**

At the corner location shown on the sketch:

On July 31, 2012 found a 7" x 13" x 18" Field Stone 0.5' Below Road Surface
DATE

left monument as found lowered monument removed monument (explain)

On Jan. 11, 2013 placed a Cast Iron Capped 2" by 30" square Telspar Monument
DATE
at the location of the found 7"x 13"x 18" Field Stone



Yellow Medicine County Coordinates
(1996 Adjustment)
N= 138062.13 E= 425908.96

MnDot Project Coordinates
(Lyon County Coordinates 1996 Adjustment)
N= 264298.35 E= 412893.96

Statement of evidence for this corner location is on back of this page.

I hereby certify that this survey, plan, or report was prepared by me or under my direct supervision and that I am a duly Licensed Land Surveyor under the laws of the state of Minnesota.

Signature [Signature]
Date 4/29/2013

Typed or Printed Name: Duane A. Bonnema
Reg. No. 14895

STATEMENT OF EVIDENCE

North Quarter Corner Section 32, T114N-R44W

- 1871 L. Harrington was contracted by the United States Government Land Office to perform the original U.S. Government Land Office Survey in this township. He records in his field notes, "Set a post for 1/4 sec cor raised mound as per instructions."
- Oct. 1917 John Norgaard, County Surveyor, records in County Surveyor's Record Book, page 381 "Found stake in Gov. Mound set stone in place."
- 1951 MnDOT SP 8709 & SP 4106 Alignment & Land Ties Field Book No. 2 Page 2-13, notes "1/4 cor assumed to be at int of rd E&W and Fen N." It also dimensions from the Hwy POT to the assumed corner.
- June 1952 MnDOT State Project No. 8709-02 & 4106-6, Between Canby and 1 Mi W. of Taunton, Sheet No. 9 shows a dimension from the Highway Center line to the Section Corner, but does not mention what type of monument is at the corner position.
- July 31, 2012 Duane A. Bonnema, LS 14895, while doing a re-monumentation survey for the Minnesota Department of Transportation, dug a 2.5' deep hole which covered an area extending 6.0' North, 2.5' South, 11.0' East, and 15.0' West, of this section corner location. The top of the original topsoil was observed to be located at a depth of 0.5' below the surface. At a depth of 1.0' a 7"x13"x18" pointed stone was found tipped on its side. This stone would be the typical shape used by a surveyor in 1917 to mark the corner location. A Cast Iron capped 2" x 30" Telspar Monument was placed at the location of the 7"x13"x18" stone.