

Janel Timm, Yellow Medicine County Recorder

By Debra Blood Deputy

N/C  
 BONNEMA SURVEYS INC  
 PROFESSIONAL LAND SURVEYING  
 1809 22ND STREET SW, SUITE 104  
 WILLMAR, MN 56201

## CERTIFICATE OF LOCATION OF GOVERNMENT CORNER

**Northeast** Corner of Section **32**, Township **114**, Range **44**

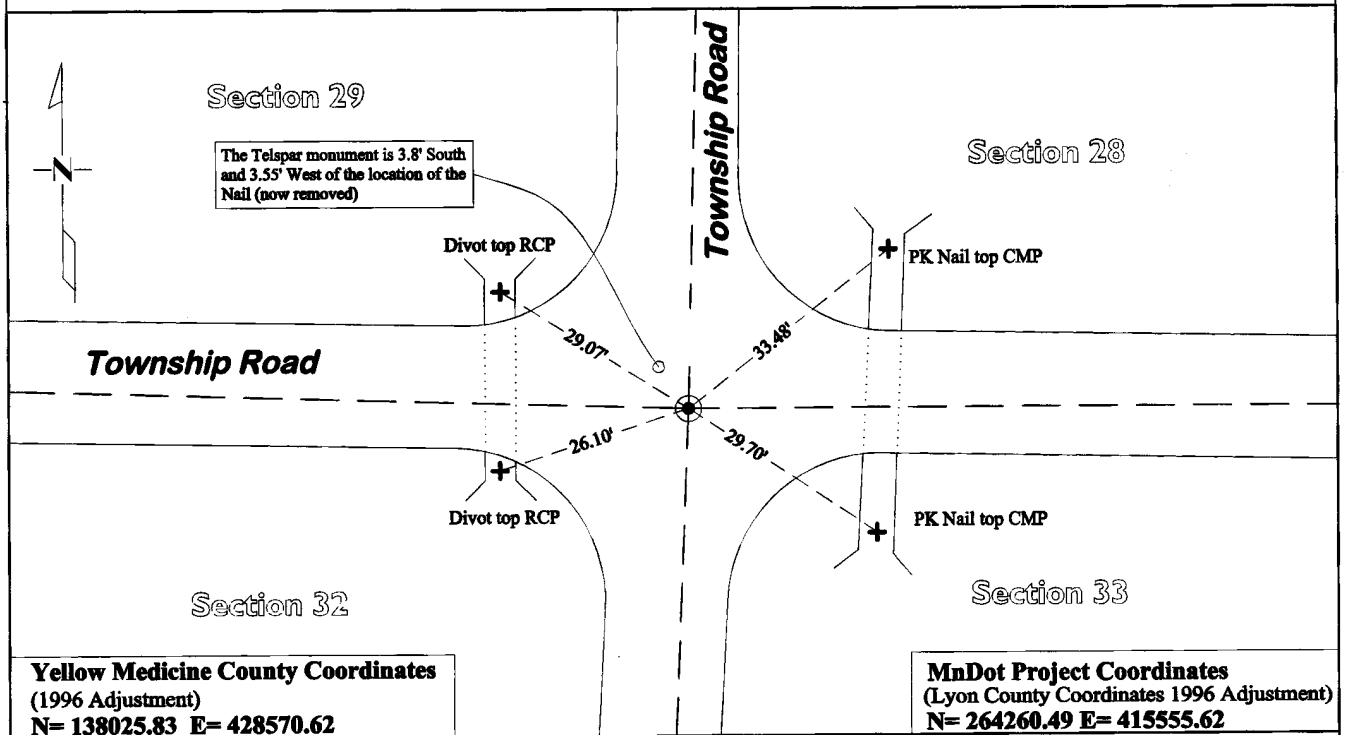
**Fifth** Principal Meridian, State of Minnesota, County of **Yellow Medicine**

At the corner location shown on the sketch:

On July 16, 2012 found a Nail at the Surface and at a depth of 1.75' a 7"x 7"x 27" Quarried Granite  
DATE  
Stone Monument was found with Traces of Charred Oak alongside the base of the Stone

left monument as found       lowered monument       removed monument (explain)

On Aug. 7, 2012 placed a Cast Iron Capped 2" by 30" square Telspar Monument  
DATE  
at the location of the found 7"x 7"x 27" Quarried Granite Stone



**Yellow Medicine County Coordinates**  
 (1996 Adjustment)  
 N= 138025.83 E= 428570.62

**MnDot Project Coordinates**  
 (Lyon County Coordinates 1996 Adjustment)  
 N= 264260.49 E= 415555.62

Statement of evidence for this corner location is on back of this page.

I hereby certify that this survey, plan, or report was prepared by me or under my direct supervision and that I am a duly Licensed Land Surveyor under the laws of the state of Minnesota.

Signature [Signature]  
 Date 4/19/2013

Typed or Printed Name: Duane A. Bonnema  
 Reg. No. 14895

# **STATEMENT OF EVIDENCE**

---

## **Northeast Corner Section 32, T114N-R44W**

- 1871 L. Harrington was contracted by the United States Government Land Office to perform the Original Public Land Survey in this township. He records in his field notes, "Set a post for the corner to secs 28, 29, 32 & 33 raised mound as per instructions."
- 1899-1901 John Norgaard, County Surveyor, records in the County Surveyor's Record Book B, Page 189 "found the government pits, set top of monument level with ground."
- July 11, 1910 John Norgaard, County Surveyor, records in the County Surveyor's Record Book, Page 220, that he used this corner while doing a survey in Section 28; however he does not cite the monument he used at the corner probably because it was very visible and set by himself in 1900 ±. He also dimensions to this corner position.
- Sept. 1917 C.W. Lamphere, Civil Engineer, prepared the record plat entitled "Plat of Sec. 33, T.114N, of R.44W of 5<sup>th</sup> P.M." on this document he shows a "Found stone" at the corner position.
- Oct 1917 John Norgaard, County Surveyor, records in the County Surveyor's Record Book, Page 381, "found all Jasper Monuments at the Section Corner" while doing a survey in this Section.
- 1951 MnDOT SP 8709 & SP 4106 Alignments & Land Ties Field Book No. 2 Page 2-15, notes "Sec cor assumed at Int of rds N&S&E" and dimensions to the Highway POT.
- June 1952 MnDOT SP 8709-02 & SP 4106-6, Between Canby and 1 Mi W of Taunton, Sheet No. 10, shows a dimension from the Highway Center line to the Section Corner, but does not mention what type of monument was found.
- 1955 The Yellow Medicine Co Hwy Dept corner tie book, Wergeland Twp, notes "Stone 2' deep" and records 6 section corner witness ties.
- July 16, 2012 Duane A. Bonnema, LS 14895, while doing a re-monumentation survey for the Minnesota Department of Transportation, found a Nail just below the road surface. With the aid of a MnDOT backhoe he excavated a 3.75' deep hole that covered an area extending 3.5' North, 4.0' South, 8.5' East, 2.0' West of the nail location. At a depth of 1.75' he found a 7"x7"x27" Quarried Granite Stone Monument with traces of charred oak near the base of the stone. The top of the original top soil was observed at a depth of 1.75'. This 7"x7"x27" Granite Monument was placed by Norgaard around 1900 after he found "the government pits" and is the best evidence of the location of the Original Public Land Survey corner. A Cast Iron capped 2" x 30" Telspar Monument was placed at the location of the found 7"x7"x27" Granite Monument. The telspar monument 3.8' South and 3.55' East of the Nail found near the surface (now removed).