

Property & Public Services
 Property Records Division
 Yellow Medicine County, Minnesota
 I hereby certify that the within instrument
 was filed on April 30, 2013 at 10:30 AM

Janel Timm, Yellow Medicine County Recorder

By Debra Blood Deputy

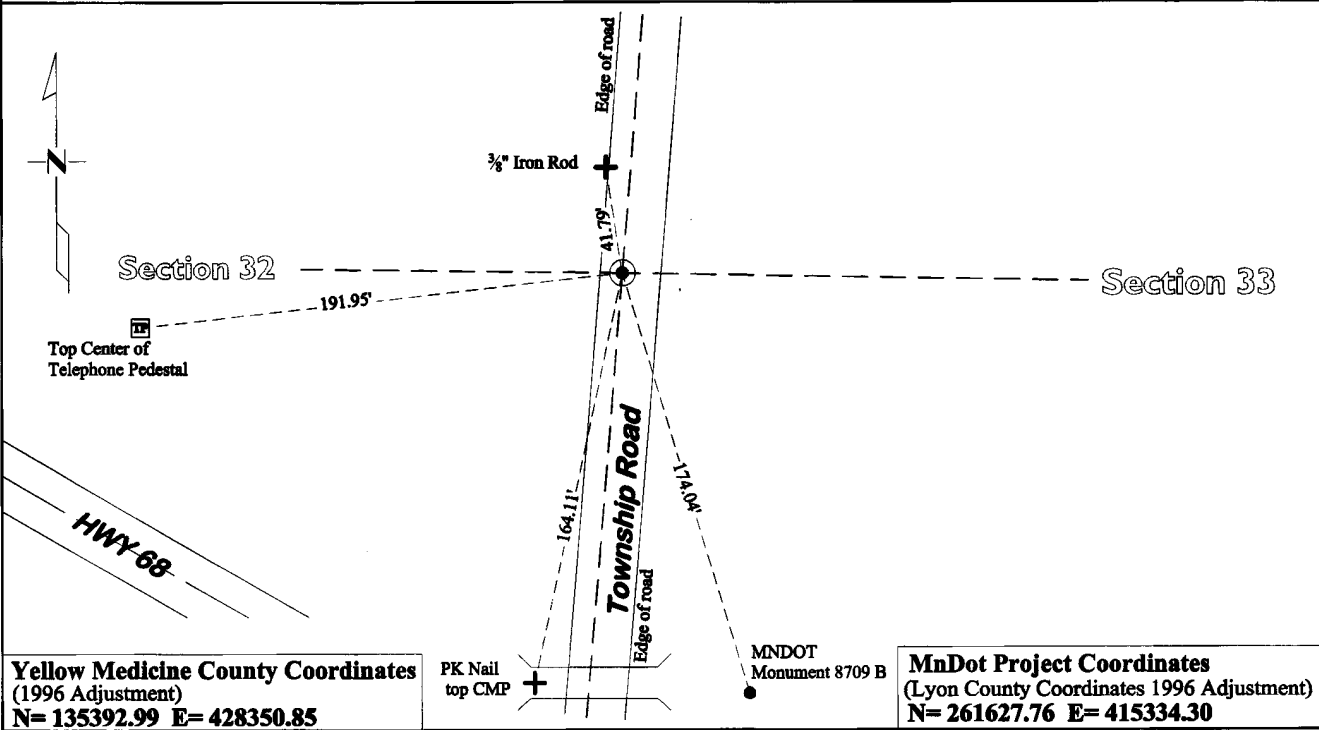
N/C
 BONNEMA SURVEYS INC
 PROFESSIONAL LAND SURVEYING
 1809 22ND STREET SW, SUITE 104
 WILLMAR, MN 56201

CERTIFICATE OF LOCATION OF GOVERNMENT CORNER

East Quarter Corner of Section **32**, Township **114**, Range **44**
Fifth Principal Meridian, State of Minnesota, County of **Yellow Medicine**

At the corner location shown on the sketch:

- On July 16, 2012 found a 2 1/2" x 24" Iron Pipe 0.5 feet below the surface
DATE
- left monument as found lowered monument removed monument (explain)
- On Aug. 8, 2012 placed a Cast Iron Capped 2" by 30" square Telspar Monument
DATE
at the location of the found 2 1/2" x 24" Iron Pipe



Statement of evidence for this corner location is on back of this page.

I hereby certify that this survey, plan, or report was prepared by me or under my direct supervision and that I am a duly Licensed Land Surveyor under the laws of the state of Minnesota.

Signature Duane A. Bonnema Typed or Printed Name: Duane A. Bonnema
 Date 8/29/2013 Reg. No. 14895

STATEMENT OF EVIDENCE

East Quarter Corner Section 32, T114N-R44W

- 1871 L. Harrington was contracted by the United States Government Land Office to perform the Original Public Land Survey in this township. He records in his field notes, "Set a post for 1/4 sec cor raised mound as per instructions."
- Sept 1881 Thomas F. Nicholl, Surveyor, prepared the record plat entitled "PORTER DALSTON" and shows that he measured from the center of this section to this corner.
- Oct 1910 John Norgaard, County Surveyor, records in County Surveyor's Record Book, page 229, that he used this corner while doing survey work in section 32, however he does not describe the monument probably because he placed the monument in 1899-1901 and it was probably quite visible yet.
- Sept 1917 C.W. Lamphere, Civil Engineer, prepared the record plat entitled "Plat of Sec 33, T.114N, of R.44W. of 5th P.M." On this plat he records that he set an "iron pin" at this corner position and dimensions to this corner.
- Oct 1917 John Norgaard, County Surveyor, records in County Surveyor's Record Book, page 381, "Found Iron Stake set on line and equal distance between Sec Cor." He was observing the "iron pin" placed by Lamphere in Sept of 1917.
- 1951 MnDOT SP 8709 # SP 4106, Alignments # Land Ties Field Book No. 2, Page 2-15 shows dimensions along the East line of this Section, but does not show a measurement to this corner.
- June 1952 MnDOT SP 8709-02 # SP 4106-6, Between Canby and 1 Mi W of Taunton, Sheet No. 10, shows the corner, but does not show a measurement to the corner or mention what type of monument was found.
- July 16, 2012 Duane A. Bonnema, LS 14895, while doing a re-monumentation survey for the Minnesota Department of Transportation excavated a 5.6' deep hole which covered an area extending 3.0' North, 3.0' South, 7.0' East, and 2.0' West, of this section corner location. The top of the original topsoil was located at a depth of 0.5' below the surface. At a depth of 0.5' below the surface of the road a 2 1/2" diameter by 24" long iron pipe was found. This iron pipe is evidently the "Iron Pin" set by C.W. Lamphere in 1917 and later recorded by John Norgaard in the same year. A MnDOT Cast Iron capped 2"x30" Telspar Monument was placed at the position of the found 2 1/2" diameter iron pipe.