

Property & Public Services
Property Records Division
Yellow Medicine County, Minnesota
I hereby certify that the within instrument
was filed on April 30, 2013 at 10:35 AM

Janel Timm, Yellow Medicine County Recorder

By Debra Blood Deputy

N/C
BONNEMA SURVEYS INC
PROFESSIONAL LAND SURVEYING
1809 22ND STREET SW, SUITE 104
WILLMAR, MN 56201

CERTIFICATE OF LOCATION OF GOVERNMENT CORNER

North Quarter Corner of Section **33**, Township **114**, Range **44**

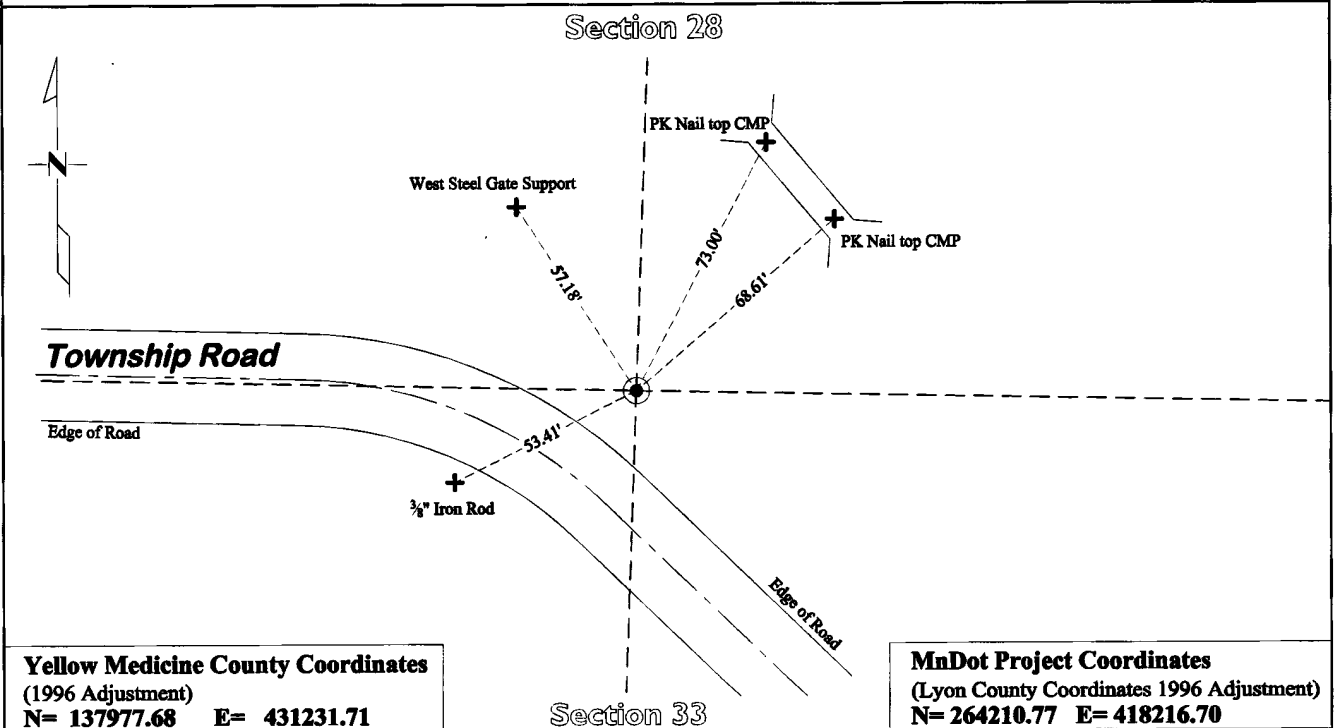
Fifth Principal Meridian, State of Minnesota, County of **Yellow Medicine**

At the corner location shown on the sketch:

On July 16, 2012 found a "T" Iron Rod 0.3' below Surface and a 2" Iron Pipe Below the "T" Iron
DATE

left monument as found lowered monument removed monument (explain)

On Aug. 8, 2012 placed a Cast Iron Capped 2" by 30" square Telspar Monument (shown below as ⊙)
DATE
at the location of the found 2" Iron Pipe and "T" Iron



Yellow Medicine County Coordinates
(1996 Adjustment)
N= 137977.68 E= 431231.71

MnDot Project Coordinates
(Lyon County Coordinates 1996 Adjustment)
N= 264210.77 E= 418216.70

Statement of evidence for this corner location is on back of this page.

I hereby certify that this survey, plan, or report was prepared by me or under my direct supervision and that I am a duly Licensed Land Surveyor under the laws of the state of Minnesota.

Signature [Signature]

Typed or Printed Name: Duane A. Bonnema

Date 4/29/2013

Reg. No. 14895

STATEMENT OF EVIDENCE

North Quarter Corner Section 33, T114N-R44W

- 1871 L. Harrington was contracted by the United States Government Land Office to perform the Original Public Land Survey in this township. He records in his field notes, "Set a post for 1/4 sec cor raised mound as per instructions."
- Sept 1917 C.W. Lamphere, Civil Engineer, prepared the record plat entitled "Plat of Sec 33, T.114N, of R.44W. of 5th P.M." On this document he shows an "Iron Pin" at this corner position and dimensions to this corner.
- July 17, 2012 Duane A. Bonnema, LS 14895, while doing a re-monumentation survey for the Minnesota Department of Transportation excavated a 3.4' deep hole which covered an area extending 3.5' North, 2.5' South, 6.0' East, and 6.0' West of this section corner location. The top of the original topsoil was located at a depth of 2' below the surface. At a depth of 0.25' a "T" iron was found, which measured 19" long. At a depth of 1.9' a 2"x18" Iron Pipe was found which is probably the "Iron Pin" set by Lamphere in 1917. The "T" iron found at the surface (now removed) was located on top of the found 2"x18" long Iron Pipe. A MnDOT Cast Iron capped 2"x30" Telspar Monument was placed at the location of the found 2"x 18" Iron Pipe.