

Property & Public Services  
Property Records Division  
Yellow Medicine County, Minnesota  
I hereby certify that the within instrument  
was filed on April 30, 2013 at 10:50 AM

Janel Timm, Yellow Medicine County Recorder

By Debra Blood Deputy

N/C  
BONNEMA SURVEYS INC  
PROFESSIONAL LAND SURVEYING  
1809 22ND STREET SW, SUITE 104  
WILLMAR, MN 56201

### CERTIFICATE OF LOCATION OF GOVERNMENT CORNER

**Northeast** Corner of Section **31**, Township **114**, Range **44**

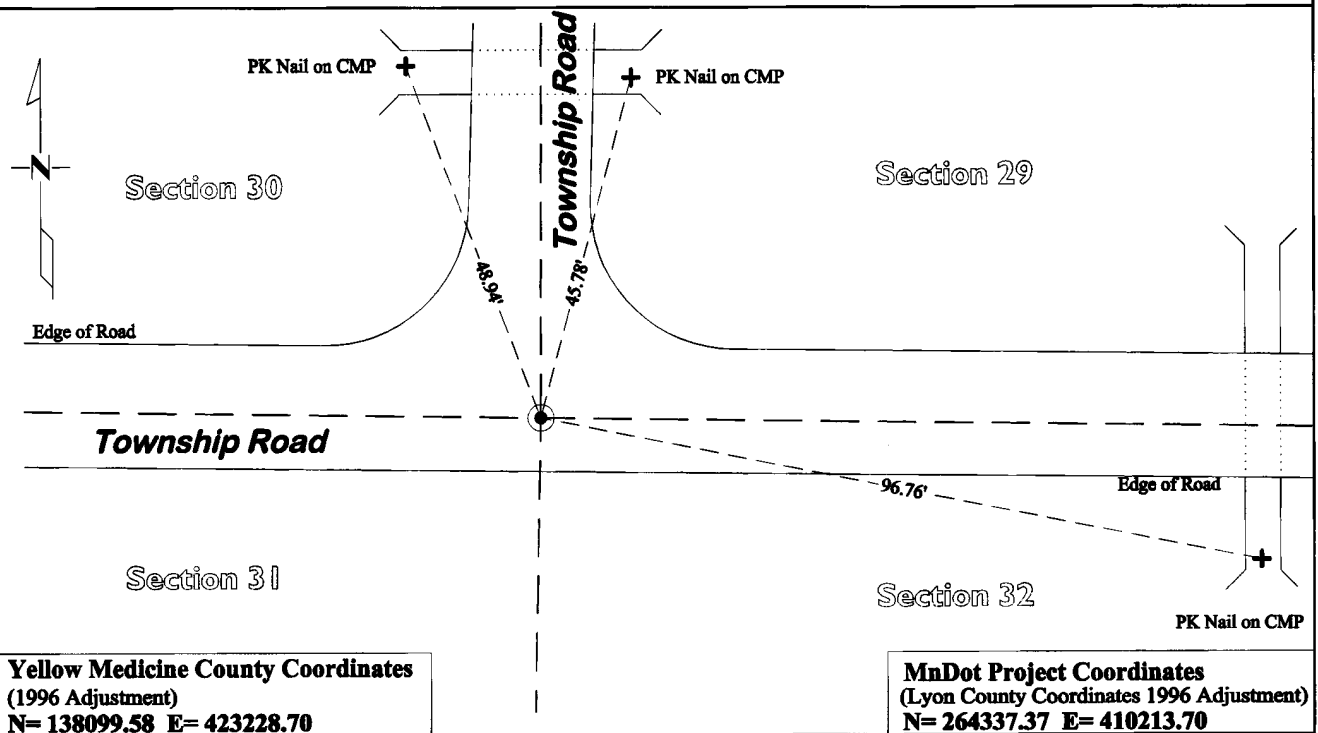
**Fifth** Principal Meridian, State of Minnesota, County of **Yellow Medicine**

At the corner location shown on the sketch:

On July 17, 2012 found a 7 x 7 x 24 inch Jasper Stone 2.0' Below Road Surface which had been  
DATE  
tipped over toward the south

left monument as found       lowered monument       removed monument (explain)

On Jan. 11, 2013 placed a Cast Iron Capped 2" by 30" square Telspar Monument  
DATE  
at the location of the 7"x7" jasper stone



**Yellow Medicine County Coordinates**  
(1996 Adjustment)  
N= 138099.58 E= 423228.70

**MnDot Project Coordinates**  
(Lyon County Coordinates 1996 Adjustment)  
N= 264337.37 E= 410213.70

Statement of evidence for this corner location is on back of this page.

I hereby certify that this survey, plan, or report was prepared by me or under my direct supervision and that I am a duly Licensed Land Surveyor under the laws of the state of Minnesota.

Signature [Signature]  
Date 4/29/13

Typed or Printed Name: Joshua M. Stern  
Reg. No. 46169

# STATEMENT OF EVIDENCE

## Northeast Corner Section 31, T114N-R44W

- 1871 L. Harrington was contracted by the United States Government Land Office to perform the Original Public Land Survey in this township. He records in his field notes, "Set a post for the corner to secs 29, 30, 31 & 32 raised mound as per instructions."
- 1899 - 1901 John Norgaard, County Surveyor, records in the County Surveyor's Record Book B, Page 189, "Found stake in the government mound. Set top of monument 4" above ground."
- 1899 - 1901 John Norgaard, County Surveyor, records in the County Surveyor's Record Book B, page 39, that he measured to the corner while doing a re-survey of section corners across the county at the request of the Co. Board.
- Oct 1912 John Norgaard, County Surveyor, records in the County Surveyor's Record Book, Page 276 "Found Jasper Stone Mont. Set by me 13 years ago."
- 1921 ± John Norgaard, County Surveyor, records in the County Surveyor's Record Book, page 457, that he recorded 2 section corner witness ties, however he does not describe the monument probably because he placed the monument in 1899-1901 and it was probably quite visible yet.
- 1951 MnDOT SP 8909 & SP 4106, Alignment Land ties Book No. 2 Pages 2-12 and 2-13 records "Inp Stone down 6" at Int of roads E & W & N" and dimension from the Hwy POT to the corner. Page 2-36 notes "found stone down 6" and records 4 section corner witness ties.
- June 1952 MnDOT SP No. 8709-02 & SP 4106-6 Between Canby and 1 Mi W of Taunton, Sheet No. 9 shows dimensions from the Highway Center line to the Section Corner, but does not mention what type of monument was found.
- Unknown The Yellow Medicine Co Hwy Dept corner tie book, Wergeland Twp, shows "Mon. 6" deep -1951 M.H.D." and recorded 8 section corner witness ties.
- Dec 2005 -  
Jan 2006 Gary L. Kratz, Regional Land Surveyor for the United States Fish and Wildlife Service, while performing work in section 31 records in his field notes, "(Assumed) in the CL-CL of E,W,N graded gravel roads, set P.K. nail down 2" and dimensions to this corner. He also prepared a section breakdown of section 31.
- July 17, 2012 Joshua M. Stern, LS 46169, while doing a re-monumentation survey for the Minnesota Department of Transportation, excavated a 4' 8" deep hole that covered an area extending 8.0' North, 2.0' South, 6.0' East, 7.0' West of the corner location. At a depth of 2' he found a Quarried 7"x7"x24" Jasper Stone monument lying on its side, tipped to the South. There was a farm tile line running near this stone location, so the installation of this line is likely what would have tipped the stone monument on its side toward the south. This Jasper Stone was set in 1899 by Norgaard at the location of the "stake in the government Mound," we could not recover any of the Section Corner ties recorded for this corner between 1920 and 1952, to verify the location of the stone. A Cast Iron capped 2" x 30" Telspar Monument was placed at the bottom (North) side of the tipped over Jasper Stone.