

Property & Public Services
Property Records Division
Yellow Medicine County, Minnesota
I hereby certify that the within instrument
was filed on May 1, 2013 at 10:05 AM

Janel Timm, Yellow Medicine County Recorder

By *Debra Blood* Deputy

N/C
BONNEMA SURVEYS INC
PROFESSIONAL LAND SURVEYING
1809 22ND STREET SW, SUITE 104
WILLMAR, MN 56201

CERTIFICATE OF LOCATION OF GOVERNMENT CORNER

East Quarter Corner of Section 31, Township 114, Range 44

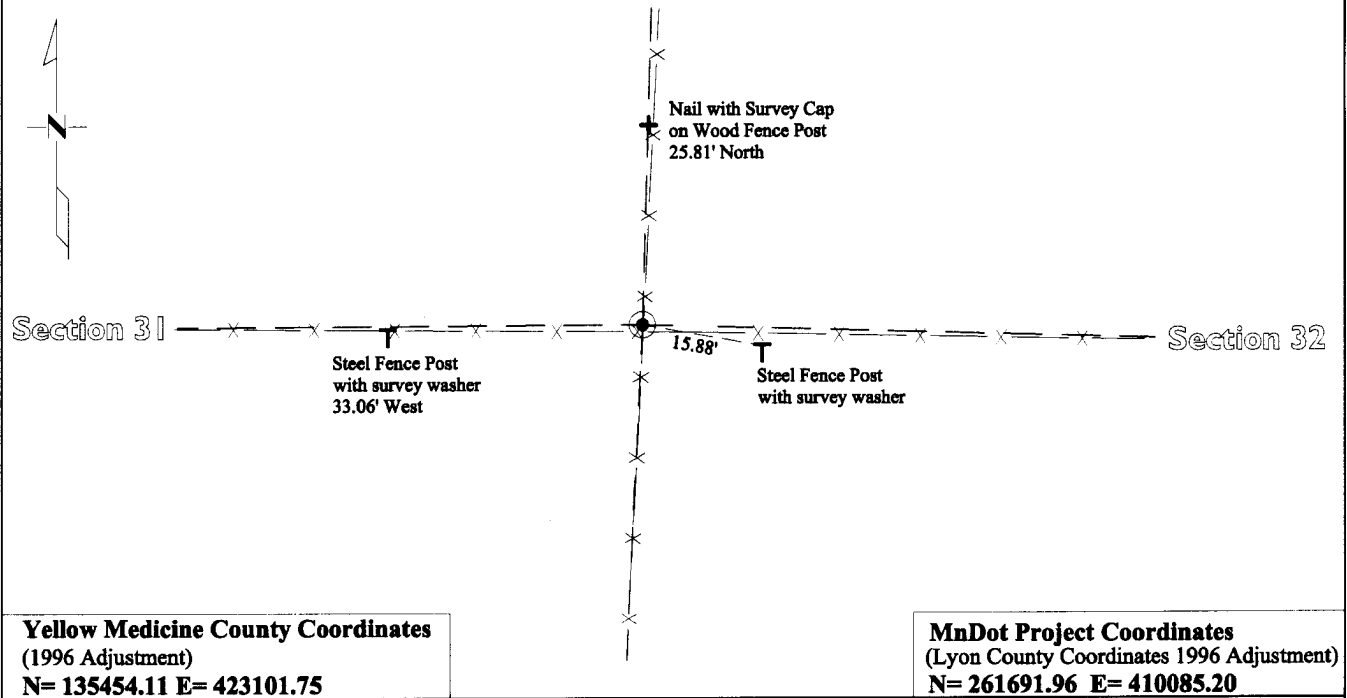
Fifth Principal Meridian, State of Minnesota, County of Yellow Medicine

At the corner location shown on the sketch:

On May 22, 2012 found Nothing
DATE

left monument as found lowered monument removed monument (explain)

On Dec. 6, 2012 placed a Cast Iron Capped 2" by 30" Telspar Monument
DATE



Statement of evidence for this corner location is on back of this page.

I hereby certify that this survey, plan, or report was prepared by me or under my direct supervision and that I am a duly Licensed Land Surveyor under the laws of the state of Minnesota.

Signature *Matthew D. Runke*
Date 4/30/13

Typed or Printed Name: Matthew D. Runke
Reg. No. 46171

STATEMENT OF EVIDENCE

East Quarter Corner Section 31, T114N-R44W

- 1871 L. Harrington was contracted by the United States Government Land Office to perform the Original Public Land Survey in this township. He records in his field notes, "Set a post for 1/4 sec cor raised mound as per instructions."
- Oct 1912 John Norgaard, County Surveyor, records in the County Surveyor's Record Book, page 276, "Located on line and equal distance between Section Cors Set Stake". He also dimensions along the east line of this Section showing this corner to be positioned equal distance from the NE and SE corners of this section.
- Oct 1917 John Norgaard, County Surveyor, records in the County Surveyor's Record Book, page 381, "fence cor" at this section corner location and dimensions from this corner to the southeast corner of this Section.
- Dec. 2005 - Gary L. Kratz, Regional Land Surveyor for the United States Fish and Wildlife Service, while performing work in Section 31 records in his field notes and Jan. 2006 on his section breakdown, that measured straight through this corner position and does not mention any type of monumentation or give any dimensions to this corner location.
- May 22, 2012 Matthew D. Runke, LS 46171, while doing a re-monumentation survey for the Minnesota Department of Transportation, searched an area extending 7.0' North, 7.0' South, 4.0' East, and 4.0' West of the straight line and split location with a metal locator and found no monumentation at the corner position. He then probed an area 3.0' North, 3.0' South, 3.0' East, and 3.0' West of the straight split location, and found a few field stones, but nothing that would have been placed by a surveyor. The straight split location falls between 3 old wood fence posts, and at the intersection of old wood post fence lines running North, South, and West. Runke then searched at the 1/16th corner to the south, where Norgaard notes he set a stone in 1917, and found a large flat field stone next to a corner of fences running North, South, and East. Norgaard noted the E1/4 corner was located "on line and equal distance between section cor" in 1912 and at a fence corner in 1917. All of the evidence found supports the on line and equal distance position as called for by Norgaard and a Cast Iron capped 2"x30" Telspar Monument was placed at this position.