

Property & Public Services
Property Records Division
Yellow Medicine County, Minnesota
I hereby certify that the within instrument
was filed on May 1, 2013 at 10:10 AM

Janel Timm, Yellow Medicine County Recorder

By Debra Blood Deputy

N/C
BONNEMA SURVEYS INC
PROFESSIONAL LAND SURVEYING
1809 22ND STREET SW, SUITE 104
WILLMAR, MN 56201

CERTIFICATE OF LOCATION OF GOVERNMENT CORNER

East Quarter Corner of Section **33**, Township **114**, Range **44**

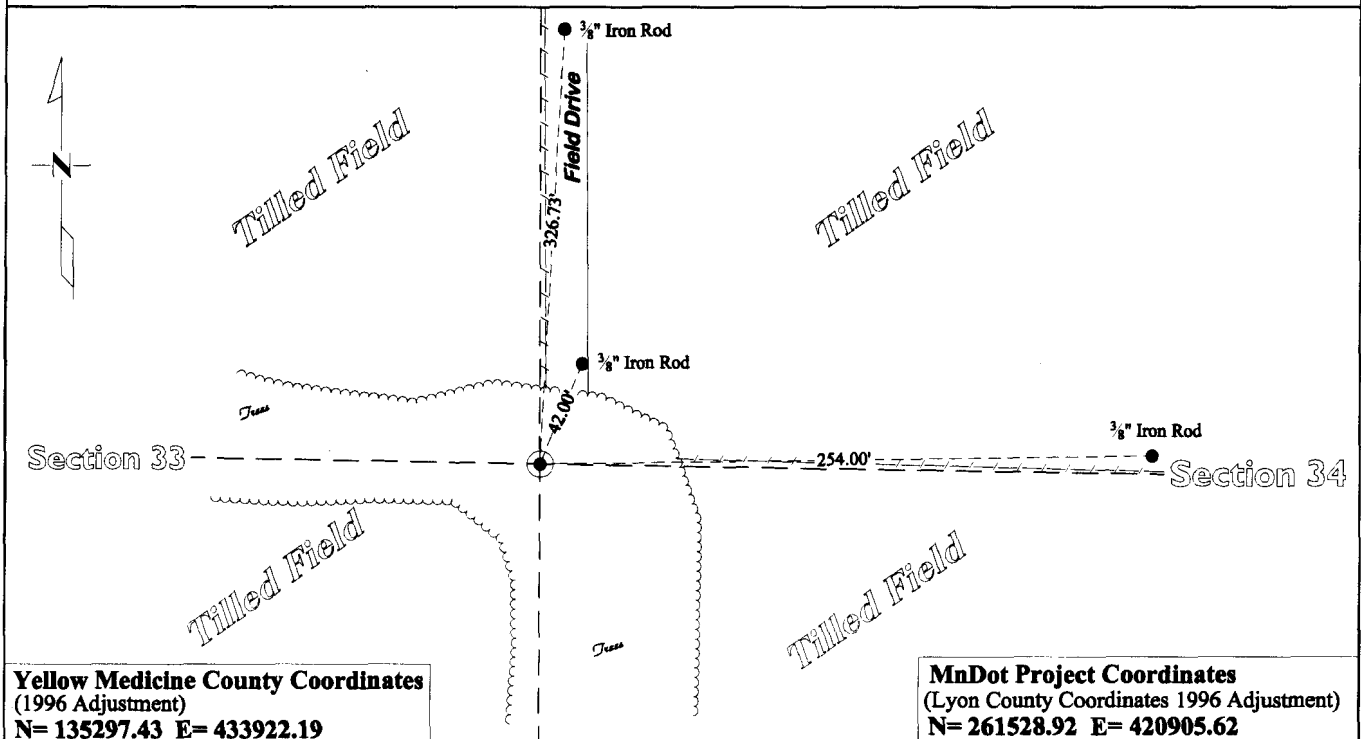
Fifth Principal Meridian, State of Minnesota, County of **Yellow Medicine**

At the corner location shown on the sketch:

On July 16, 2012 found Nothing
DATE

left monument as found lowered monument removed monument (explain)

On Jan. 28, 2013 placed a Cast Iron Capped 2" by 30" Telspar Monument, midway and online between
DATE
the NE and SE corners of this section as done by Norgaard, Lamphere and the MnDNR



Statement of evidence for this corner location is on back of this page.

I hereby certify that this survey, plan, or report was prepared by me or under my direct supervision and that I am a duly Licensed Land Surveyor under the laws of the state of Minnesota.

Signature Matthew Runke

Typed or Printed Name: Matthew D. Runke

Date 4/30/13

Reg. No. 46171

STATEMENT OF EVIDENCE

East Quarter Corner Section 33, T114N-R44W

- 1871 L. Harrington was contracted by the United States Government Land Office to perform the Original Public Land Survey in this township. He record in their field notes, "Set a post for ¼ sec cor raised mound as per instructions."
- July 7 & 8, 1903 John Norgaard, County Surveyor, records in County Surveyor's Record Book, Page 176, "Oak Stake" and dimensions to this corner position, showing it equal distance from the NE and SE corners of this section.
- Sept 1917 C.W. Lamphere, Civil Engineer, prepared the record plat entitled "Plat of Sec 33, T. 114N, of R.44W. of 5th P.M." On this plat he notes an "Iron Pin" at the corner position and dimensions to this corner, showing it online and midway between the NE and SE corners of this section.
- 1972 The Minnesota Department of Natural Resources prepared a drawing entitled "Antler Wildlife Management Area". On this drawing they note "Wood Hub Set" and dimensions to this corner position, showing it online and midway between the NE and SE corners of this section.
- Jan 28, 2013 Matthew D. Runke, LS 46171, while doing a re-monumentation survey for the Minnesota Department of Transportation searched an area extending 15.0' North, 15.0' South, 10.0' East, and 10.0' West of this section corner location with a metal locator and could not find the Iron Pin set by Lamphere in 1917. There was a lot of downed fence and steel fence posts in this area which made for a difficult search for the Iron Pin. Norgaard in 1903, Lamphere in 1917, and the Minnesota Department of Natural Resources in 1972, all show this corner to be located midway and on line between section corners. This Location lands at a corner of fences running South and West and fits well with a tipped 1" Iron Pipe, set by Lamphere at the 1/16th corner, a ¼ mile to the west of this corner. A Cast Iron capped 2"x30" Telspar Monument was placed midway and online between the NE and SE corners of this section as was done by Norgaard, Lamphere, and the MN DNR.