

Property & Public Services
Property Records Division
Yellow Medicine County, Minnesota
I hereby certify that the within instrument
was filed on May 2, 2013 at 10:10 AM

N/C
BONNEMA SURVEYS INC
PROFESSIONAL LAND SURVEYING
1809 22ND STREET SW, SUITE 104
WILLMAR, MN 56201

Janel Timm, Yellow Medicine County Recorder

By Debra Blood Deputy

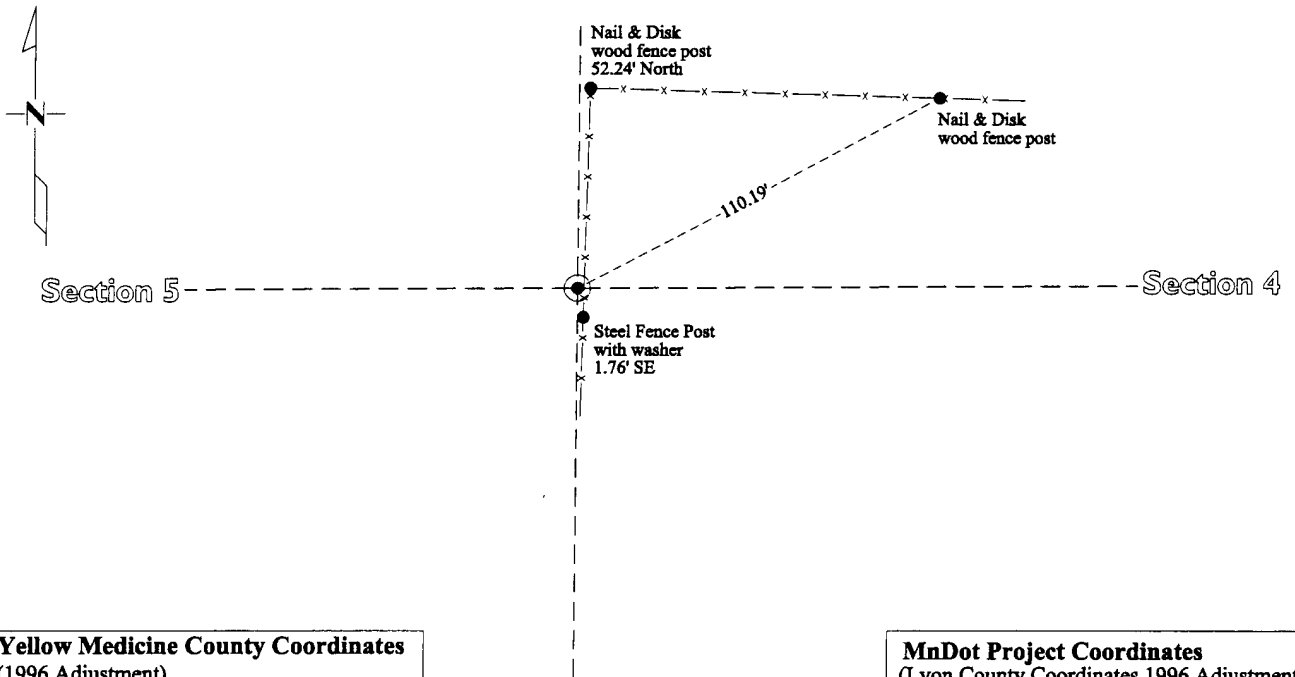
CERTIFICATE OF LOCATION OF GOVERNMENT CORNER

East QUARTER Corner of Section 5, Township 114, Range 45

Fifth Principal Meridian, State of Minnesota, County of Yellow Medicine

At the corner location shown on the sketch:

- On May 22, 2012 found Nothing
DATE
- left monument as found lowered monument removed monument (explain)
- On March 1, 2013 placed a Cast Iron Capped 2" x 30" Telspar Monument on straight line proration
DATE



Yellow Medicine County Coordinates
(1996 Adjustment)
N= 161809.63 E= 396726.03

MnDot Project Coordinates
(Lyon County Coordinates 1996 Adjustment)
N= 288063.09 E= 383724.52

Statement of evidence for this corner location is on back of this page.

I hereby certify that this survey, plan, or report was prepared by me or under my direct supervision and that I am a duly Licensed Land Surveyor under the laws of the state of Minnesota.

Signature Matthew D. Runke
Date 5/1/13

Typed or Printed Name: Matthew D. Runke
Reg. No. 46171

STATEMENT OF EVIDENCE

East Quarter Corner Section 5, T114N-R44W

1871

L. Harrington was contracted by the United States Government Land Office to perform the Original Public Land Survey in this township. He records in his field notes, "Set a post for 1/4 sec cor and raised mound as per instructions".

Unknown Date

County Surveyor's Record Book, pg 380, shows a dimension from the to this corner position but does not mention what type of monument was found.

May 22, 2012

Matthew D. Runke, LS 46171, while doing a remonumentation survey for the Minnesota Department of Transportation searched an area extending 25' North, 25' South, 15' East and 15' West of the straight line proration position with a metal locator and we did not excavate at this corner location due to 141 year gap in survey activity, records and perpetuation of this corner position. Found nothing at the corner position. A cast iron capped 2" square by 30" long iron talspar monument was placed on a straight line between the NE and SE corners of this section and on the Original Public Land Survey proportional distances. This position falls in line with the North-South fence line and a fence line to the west of this corner position. It also fits well with the dimension shown on County Survey Record Book, page 380 from the NE corner to this corner position.