

Property & Public Services
Property Records Division
Yellow Medicine County, Minnesota
I hereby certify that the within instrument
was filed on May 2, 2013 at 10:20 AM

N/C
BONNEMA SURVEYS INC
PROFESSIONAL LAND SURVEYING
1809 22ND STREET SW, SUITE 104
WILLMAR, MN 56201

Janel Timm, Yellow Medicine County Recorder

By Debra Blood Deputy

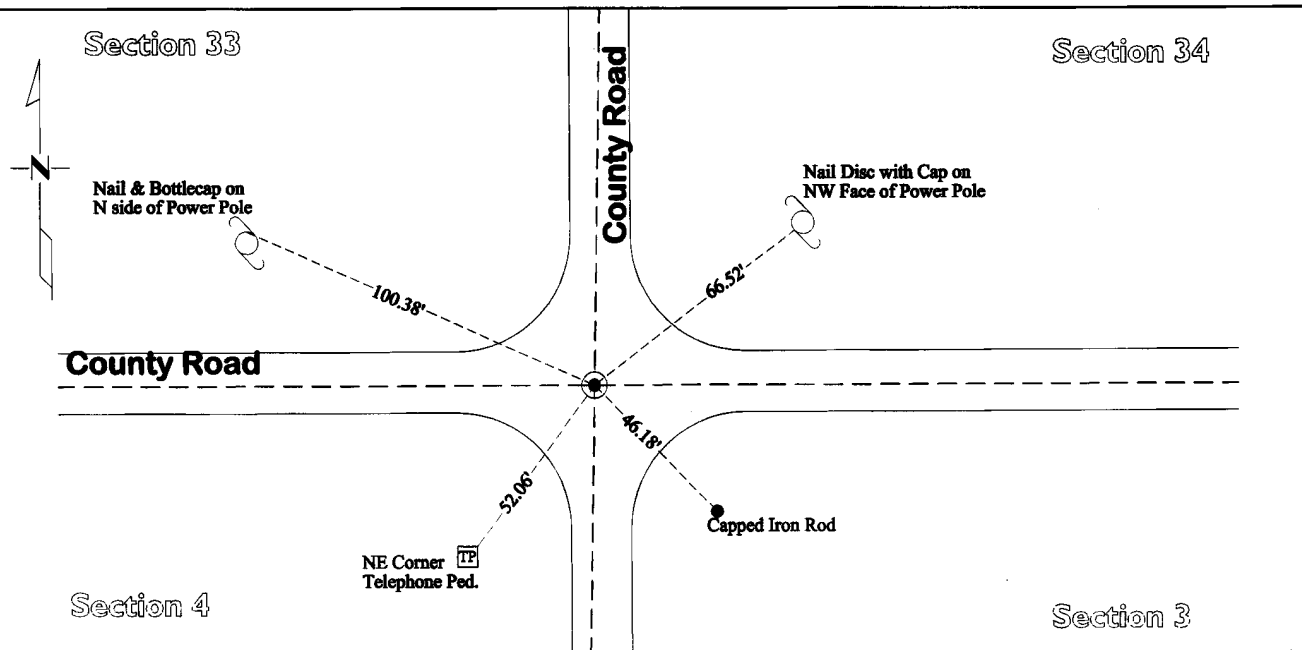
CERTIFICATE OF LOCATION OF GOVERNMENT CORNER

Northeast Corner of Section **4**, Township **114**, Range **45**

Fifth Principal Meridian, State of Minnesota, County of **Yellow Medicine**

At the corner location shown on the sketch:

- On Aug 2, 2012 found a 1/2" x 18" Capped Iron Rod 0.5' below surface, a 1/2" x 20" iron pipe 1.5' below
DATE surface, and a 7"x7" Jasper stone with a 3/4" rod on the east side and wood traces on the south 3.1' below
the surface
- left monument as found lowered monument removed monument (explain)
- On April 3, 2013 placed a Cast iron capped 2" x 30" iron telspar monument at the location of the
DATE 1/2" x 18" capped iron rod and Jasper stone



Yellow Medicine County Coordinates
(1996 Adjustment)
N= 164558.46 E= 402021.88

MnDot Project Coordinates
(Lyon County Coordinates 1996 Adjustment)
N= 290808.91 E= 389022.04

Statement of evidence for this corner location is on back of this page.

I hereby certify that this survey, plan, or report was prepared by me or under my direct supervision and that I am a duly Licensed Land Surveyor under the laws of the state of Minnesota.

Signature [Signature]
Date 5/11/13

Typed or Printed Name: Joshua M. Stern
Reg. No. 46169

STATEMENT OF EVIDENCE

Northeast Corner Section 4, T114N-R45W

- Oct. 1858 W.J. Neely was contracted by the United States Government Land Office to perform the Original Public Land Survey in this township. He records in his field notes, "Set post corner to sect 3, 4, 33 & 34 deposited coal made mound Trench & pits as per instructions."
- June 6, 1883 Jonah Peterman, County Surveyor, records in Yellow Medicine County Surveyor's Record Book, pg 15 "stone" at corner position.
- May 13, 1897 John T. Pnce, Land Surveyor, prepared the record plat entitled, "THIRD RAILROAD ADDITION TO THE TOWN OF CANBY" on file in the office of the Yellow Medicine County Recorder. Pnce shows this corner but does not state what type of monument was found.
- May 16, 1899 John Norgaard entered into a contract with the Yellow Medicine County Board for the "re-survey of all the section corners except the Township Corners" in yellow Medicine County. "The monuments are Jasper Granite 2 feet long by 6" by 6", all dimensions are given in feet." John Norgaard turned in his survey field notes to the Yellow Medicine County Recorder, who filed them as No. 28417, on September 28, 1901. These field notes became the County Surveyor's Record Book B pages 23 & 41.
- 1899 - 1901 John Norgaard, County Surveyor records in the County Surveyor's Record Book B Pages 121 & 190, "Found stake and iron bolt set by the railroad surveyors and used for the platting of the Village of Canby. Set top of monument 2" above ground."
- 1900 J.C.W. Kline, Surveyor, prepared the record plat entitled, "FOURTH RAILROAD ADDITION TO THE TOWN OF CANBY" on file in the office of the Yellow Medicine County Recorder. Kline shows this corner but does not state what type of monument was found.
- Unknown Date County Surveyor's Record Book, pg 452, notes N.E. Cor. Sec.4 Fence Corner 33 feet E. and 34.4 feet North.
- Unknown Date County Surveyor's Record Book, pg 457, shows 2 section corner witness ties for this corner but does not mention what type of monument was found.
- Sept 3, 1934 John Norgaard, County Surveyor, records in County Surveyor's Record Book, pg. 542, "NE corner" and 2 Section Corner witness ties, but does not state what type of monument was found.
- 1947 MNDOT SP 8708 T.H. 68, Book 5, Alignments-Land Ties, page 2-10 notes "Section Corner Found Iron Pipe 1 1/2' below Road Surface".
- Oct 30, 1973 Willard Pellinen R.L.S. 9626, filed a Certificate of Location of Government Corner with the County Recorder, and states he "Found an Iron Pipe. County Hwy Dept. ties show iron pipe in 1941. Distance to SE corner Section 34 very nearly the same as Canby plat distance." 3 section corner witness ties were established.
- Dec 30, 1977 Willard Pellinen, RLS 9626, prepared the record plat entitled CLAPP'S ADDITION on file in the office of the Yellow Medicine County Recorder. Pellinen shows the NE corner of section 4 but does not state what type of monument was found.
- July 18, 1980 Willard Pellinen, RLS 9626, prepared the record plat entitled FERGUSON ADDITION on file in the office of the Yellow Medicine County Recorder. Pellinen denotes iron monument found at the corner position.
- Nov 18, 2010 Daniel L Bueltel RLS 43844, on project No. 10-4071, records he found a "5/8" Iron" and dimensions to this corner position.
- Oct 13, 2011 John Madsen, R.L.S. 13593, while doing survey work in this Section on Madsen Land Survey file # 11118, notes "Found a capped iron rod in bit. paving (surface.)"
- Aug 2, 2012 Joshua M. Stern, LS 46169, while doing a remonumentation survey for the Minnesota Department of Transportation, located a 1/2" capped iron rod at the road surface. He dug a 4.8' deep hole that covered an area extending 2.5' north, 2.5' south, 5.0' east, and 4.0' west of the Capped Iron Rod location. At a depth of 0.5' he found a 1/2"x20" rebar standing upright. At a depth of 1.5' he found a 1 1/2" Iron Pipe with a railroad spike along its side. At a depth of 2.50' he found a 7"x7" Jasper Stone with a 3/4" Iron set on the east side of the stone and traces of wood on the south side of the stone. A cast iron capped 2" square x 30" long iron telspar monument was placed at the surface at the location of the 1/2" capped iron rod, 1/2" rebar, 1 1/2" iron pipe (all removed) and directly over the Jasper Stone.