

Property & Public Services
Property Records Division
Yellow Medicine County, Minnesota
I hereby certify that the within instrument
was filed on May 2, 2013 at 10:25 AM

Janel Timm, Yellow Medicine County Recorder

By Debra Blood Deputy

N/C
BONNEMA SURVEYS INC
PROFESSIONAL LAND SURVEYING
1809 22ND STREET SW, SUITE 104
WILLMAR, MN 56201

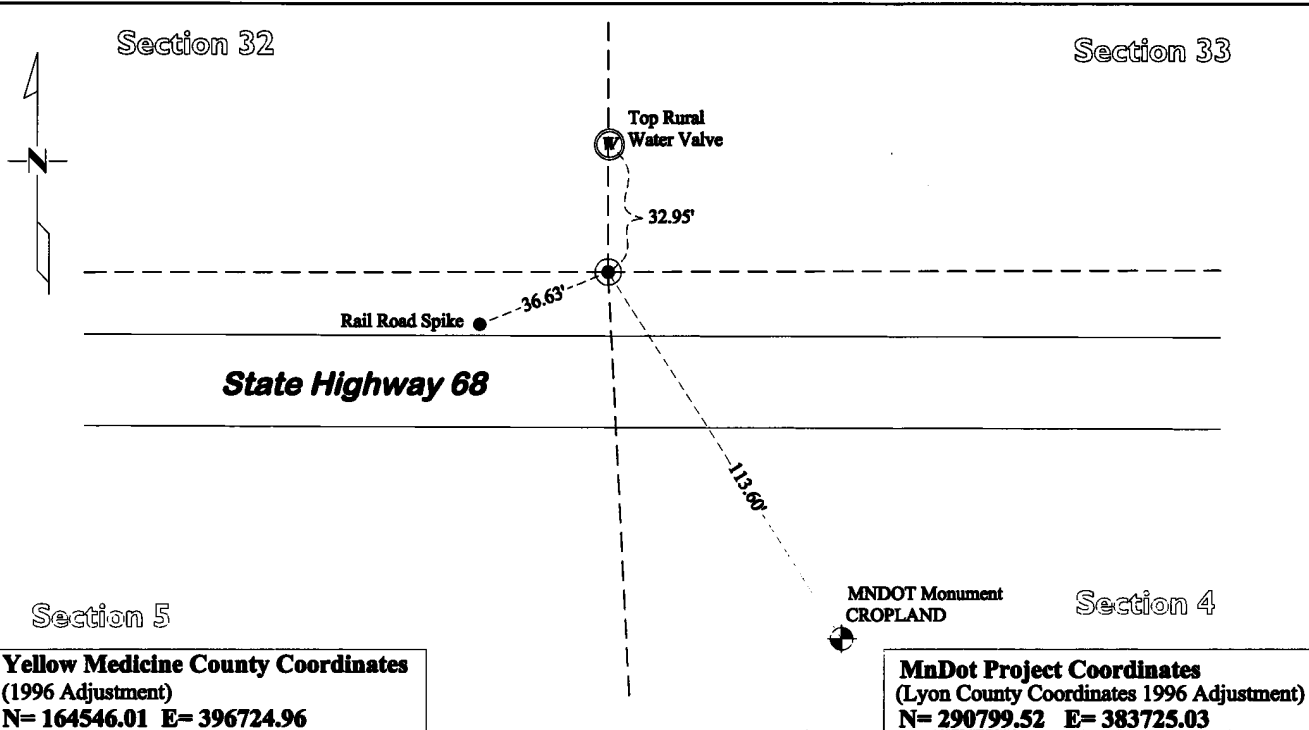
CERTIFICATE OF LOCATION OF GOVERNMENT CORNER

Northeast Corner of Section **5**, Township **114**, Range **45**

Fifth Principal Meridian, State of Minnesota, County of **Yellow Medicine**

At the corner location shown on the sketch:

- On May 23, 2012 found a 1/2" capped iron rod RLS 19092
DATE
- left monument as found lowered monument removed monument (explain)
- On April 3, 2013 placed a Cast iron capped 2" x 30" telspar monument at the location of the found
DATE
1/2" capped iron rod



Statement of evidence for this corner location is on back of this page.

I hereby certify that this survey, plan, or report was prepared by me or under my direct supervision and that I am a duly Licensed Land Surveyor under the laws of the state of Minnesota.

Signature [Signature]
Date 5/1/13

Typed or Printed Name: Joshua M. Stern
Reg. No. 46171

STATEMENT OF EVIDENCE

Northeast Corner Section 5, T114N-R45W

- Oct. 1858 W.J. Neely was contracted by the United States Government Land Office to perform the Original Public Land Survey in this township. He records in his field notes, "Set post corner to sect 4, 5, 32 & 33 deposited coal made mound Trench & pits as per instruction".
- May 16, 1899 John Norgaard entered into a contract with the Yellow Medicine County Board for the "re-survey of all the section corners except the Township Corners" in Yellow Medicine County. "The monuments are Jasper Granite 2' long by 6" by 6", all dimensions are in feet." John Norgaard turned in his survey field notes to the Yellow Medicine County Recorder, who filed them as Document No. 28417, on September 28, 1901. These field notes became the County Surveyor's Record Book B pages 23 & 41.
- 1899 - 1901 John Norgaard, County Surveyor, records in the County Surveyor's Record Book B Page 121 & 190, "Found stake and iron bolt set by the Railroad Surveyors years ago. Set top of monument level with ground."
- Unknown County Surveyors Record Book, page 380, shows a dimension from the East 1/4 corner to this corner, but does not mention what type of monument was found.
- 1935 MnDOT S.P.8709 T.H. 68, Book 4, page 6, Alignment -Land Ties-Topo shows the corner with angles to the centerline.
- 1947 MnDOT S.P.8708 T.H. 68, Book 5, page 2-10, Alignment-Land Ties, states "Section Corner Found 6"x6" Square Red Granite Monument 0.7' below Road Surface.
- 1947 MNDOT S.P. 8708 Map File 13-47_011 & Map File 13-47_012 dimension from the highway 68 center line to the section corner and states "6" x 6" Granite Mon. Inp at Sec. Cor."
- 1951 MnDOT S.P.8708 T.H. 68, Book 8, Alignment-Land Ties, states "SEC COR sta. 504+23.1 - 30.9 Rt", It also shows the Monument as a "6x6 Red Marb. Rock" and also shows 2 witness ties.
- April 3, 2013 Joshua M. Stern Land Surveyor #46169 while doing a remonumentation survey for the Minnesota Department of Transportation found a 1/2" capped iron rod (RLS 19092) at the corner position. A 3'x3' area was probed around the Marihart iron which is located 29' north of the existing centerline. This corner location was not excavated due to the location being in the cut area of the road ditch. According to the 1947 MNDOT ROAD plans, the 6"x6" jasper granite was found in the road surface and was designed to be 30.9' north of the center line. A cast iron capped 2" square by 30" long iron telspar monument was placed at the location of the found Marihart 1/2" capped iron rod.