

Property & Public Services  
Property Records Division  
Yellow Medicine County, Minnesota  
I hereby certify that the within instrument  
was filed on May 2, 2013 at 10:30 AM

Janel Timm, Yellow Medicine County Recorder

By Debra Blood Deputy

N/C  
BONNEMA SURVEYS INC  
PROFESSIONAL LAND SURVEYING  
1809 22ND STREET SW, SUITE 104  
WILLMAR, MN 56201

# CERTIFICATE OF LOCATION OF GOVERNMENT CORNER

**Northeast** Corner of Section **9**, Township **114**, Range **45**

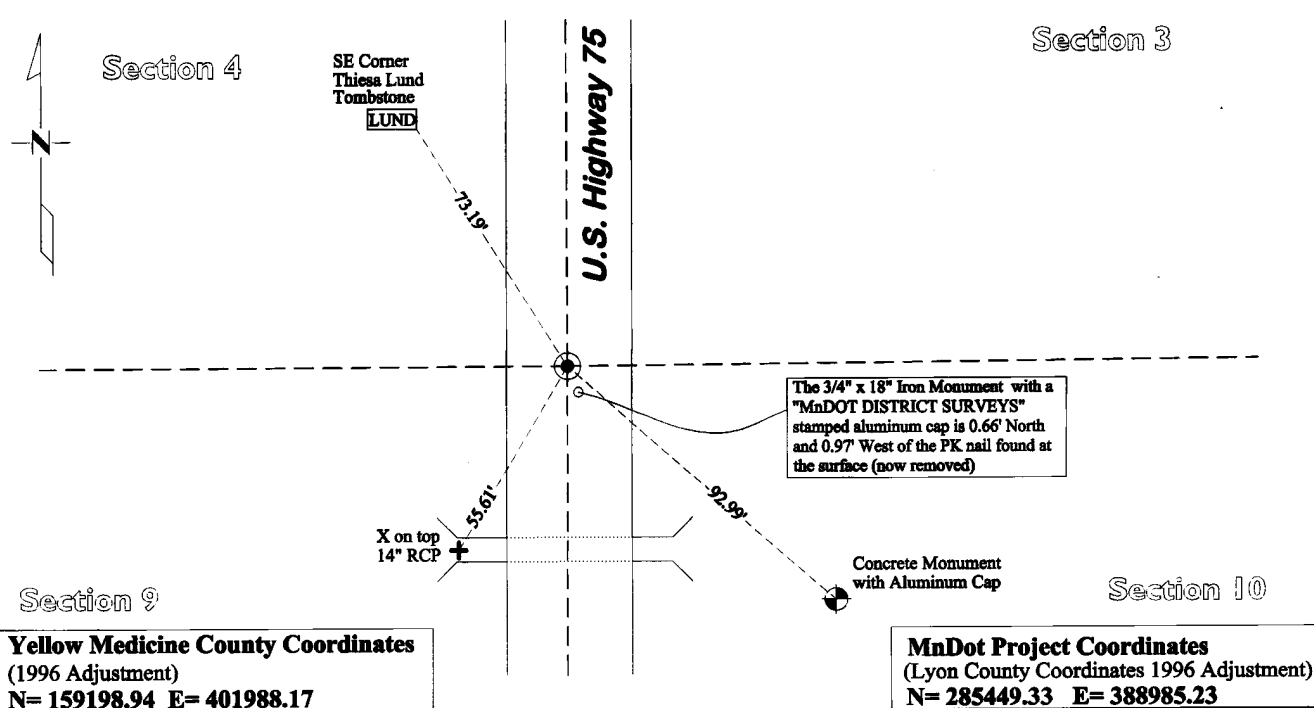
**Fifth** Principal Meridian, State of Minnesota, County of **Yellow Medicine**

At the corner location shown on the sketch:

On August 8, 2013 found a PK nail at the surface of the road and a 1/2" x 22" iron rod 1.2' below surface  
DATE

left monument as found       lowered monument       removed monument (explain)

On April 3, 2013 placed a 3/4" x 18" iron monument with a "MNDOT DISTRICT SURVEYS" stamped aluminum cap at the location of the 1/2" x 22" iron rod  
DATE



**Yellow Medicine County Coordinates**  
(1996 Adjustment)  
N= 159198.94 E= 401988.17

**MnDot Project Coordinates**  
(Lyon County Coordinates 1996 Adjustment)  
N= 285449.33 E= 388985.23

Statement of evidence for this corner location is on back of this page.

I hereby certify that this survey, plan, or report was prepared by me or under my direct supervision and that I am a duly Licensed Land Surveyor under the laws of the state of Minnesota.

Signature [Signature]  
Date 5/1/13

Typed or Printed Name: Joshua M. Stern  
Reg. No. 46169

# STATEMENT OF EVIDENCE

## Northeast Corner Section 9, T114N-R45W

- 1871 L. Harrington was contracted by the United States Government Land Office to perform the Original Public Land Survey in this township. He records in his field notes, "Set a post for the corner to sections 3, 4, 9 & 10 raised mound as per instructions".
- November 6, 1891 Jonah Peterman, County Surveyor, records in the County Surveyor's Record Book, page 52, "I found all of the quarter posts in and to said section 10" and he also notes "government corner found"
- May 16, 1899 John Norgaard entered into a contract with the Yellow Medicine County Board for the "re-survey of all the section corners except the Township corners" in Yellow Medicine County. "The Monuments are Jasper Granite 2 feet long by 6 inches by 6 inches, all dimensions are given in feet." John Norgaard turned in his survey field notes to the Yellow Medicine County Recorder, who filed them as Doc No. 28417, on September 28, 1901. These field notes became the County Surveyor's Record Book B page 41
- 1899 - 1901 John Norgaard, Yellow Medicine County Surveyor, records in the County Surveyors Record Book B Page 194, "Found stake as set by the Railroad Surveyors 33 feet west of Railroad fence, In 1926 Canby Cemetery fence. Set top of monument level with ground."
- 1918 I.M. Youngdale, records in the County Surveyor's Record Book, pages 398 & 399, "Found Jasper Monument - misplaced and set 3 feet too far west by Sebarts" and dimensions to this corner.
- Unknown Date MNDOT S.P. 8710 Map File 31-17\_004 shows "Sec. Cor. At P.I. Fe. Line E & W - Halfway bet. Ret. Wall lines - Steel Bar Inp".
- 1940 MNDOT SP 8710 T.H. 75 Book 2, page 2-7, Alignment - Land Ties - Topo states "section cor on East & West fence line 33' from each cor. post also half way between retaining wall lines." It further states "Steel bar placed."
- 1964 MNDOT SP 8710 T.H. 75 Book 7, page 5-7, Alignment - Land Ties states " Sec. cor at P.I. Steel bar in place". It also shows 2 section corner witness ties.
- Nov 13, 1975 Willard Pellinen, RLS 9626, on the record plat entitled CANBY CEMETERY SOUTH ADDITION, on file in the office of the Yellow Medicine County Recorder denotes an iron monument at the corner location.
- Nov 18, 2010 Daniel L Bueltel RLS 43844, on Project No. 10-4071, records he found a "1/2" iron" at this corner position and dimensions Section 3.
- Aug 1, 2012 Joshua M. Stern, Land Surveyor #46169, while doing a remonumentation survey for the Minnesota Department of Transportation found a PK nail at the road surface. He dug a 6.0' deep hole that covered an area extending 2.5' north, 5.5' south, 2.0' east, and 2.5' west of the PK location. The top of the original topsoil was not observed possibly due to the sewer line construction east of the corner position. At a depth of 1.2' a 1/2" x 22" iron rod was found 0.66' north and 0.97' west of the PK nail. Dan Bueltel was contacted and at the time of his survey in 2010, the PK nail was not in the road. We mutually agreed that the 1/2" x 22" iron rod was the best available evidence for this corner. A cast iron capped 2" square by 30" long iron telspar monument was placed at the position of the found 1/2" iron rod.