

Property & Public Services  
Property Records Division  
Yellow Medicine County, Minnesota  
I hereby certify that the within instrument  
was filed on May 3, 2013 at 10:10 AM

N/C  
BONNEMA SURVEYS INC  
PROFESSIONAL LAND SURVEYING  
1809 22ND STREET SW, SUITE 104  
WILLMAR, MN 56201

Janel Timm, Yellow Medicine County Recorder

By Debra Blood Deputy

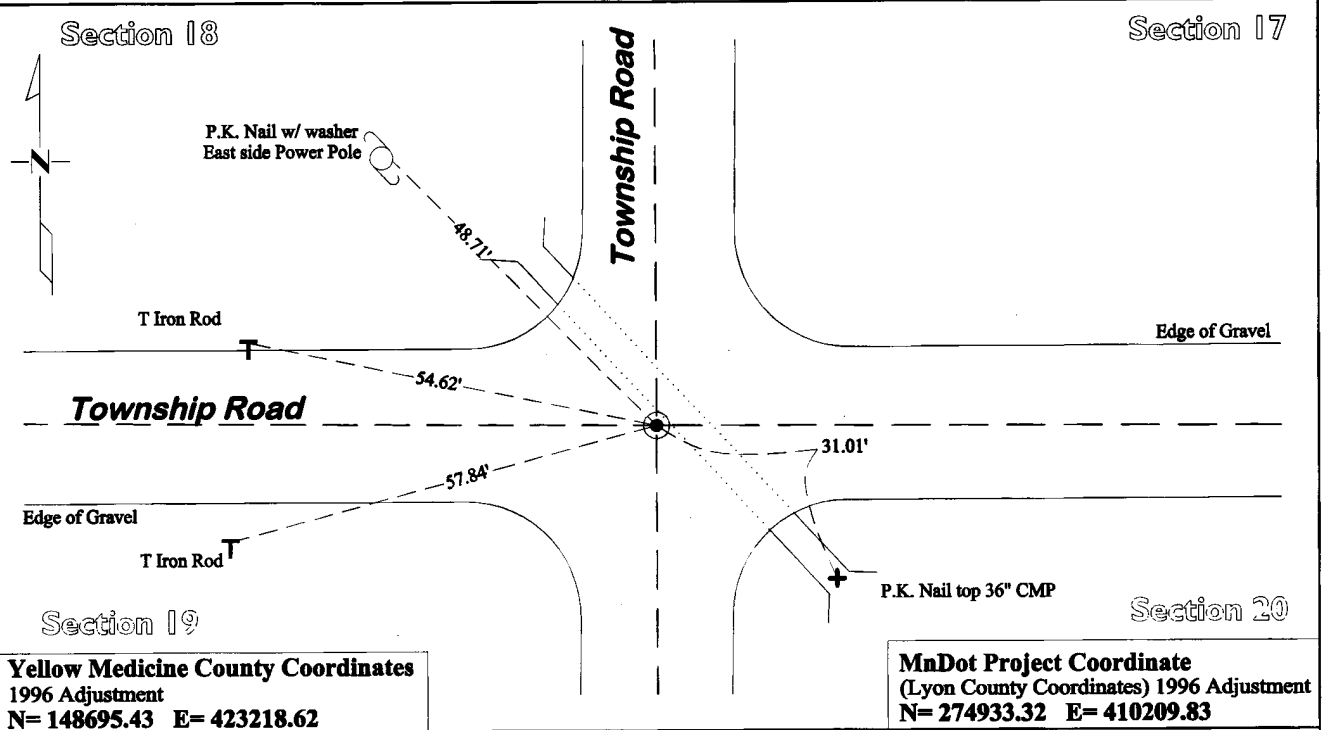
### CERTIFICATE OF LOCATION OF GOVERNMENT CORNER

**Northeast** Corner of Section **19**, Township **114**, Range **44**

**Fifth** Principal Meridian, State of Minnesota, County of **Yellow Medicine**

At the corner location shown on the sketch:

- On July 30, 2012 found No Monument at Surface, at a depth of 4 1/2' deep found a 6"x 6"x 25" Quarried  
DATE Red Granite Jasper Stone Monument that had been flattened
- left monument as found       lowered monument       removed monument (explain)
- On Aug. 7, 2012 placed a Cast Iron Capped 2" by 30" Square Telspar Monument at the location  
DATE determined by the USFWS and the Dan Bueltel 2011 certificate



**Yellow Medicine County Coordinates**  
1996 Adjustment  
N= 148695.43 E= 423218.62

**MnDot Project Coordinate**  
(Lyon County Coordinates) 1996 Adjustment  
N= 274933.32 E= 410209.83

Statement of evidence for this corner location is on back of this page.

I hereby certify that this survey, plan, or report was prepared by me or under my direct supervision and that I am a duly Licensed Land Surveyor under the laws of the state of Minnesota.

Signature [Signature]  
Date May 1, 2013

Typed or Printed Name: Duane A. Bonnema  
Reg. No. 14895

# **STATEMENT OF EVIDENCE**

---

## **Northeast Corner Section 19, T114N-R44W**

- 1871 L. Harrington was contracted by the United States Government Land Office to perform the Original Public Land Survey in this township. He records in his field notes, "Set a post for the corner to secs 17, 18, 19, & 20 raised mound as per instructions."
- 1899-1901 John Norgaard, County Surveyor, records in County Surveyor's Record Book B, Page 188, "Found stake in the government mound. Set top of monument 2" above ground."
- October 1913 John Norgaard, County Surveyor, Records in County Surveyor's Record Book, Page 307, that he found "Jasper Stone Monument" at this corner location.
- 1920's County Surveyor's Record Book, Page 457, records 2 witness ties to this corner, but does not mention what type of monument was found.
- March 22-24, 2010 Gary L. Kratz, Regional Land Surveyor for the United States Fish and Wildlife Service while performing work in the SE ¼ of section 20, states in his field notes "set ½" x 16" iron pipe 3" down." He further notes on his section breakdown sheet "on CL-CL" and established 2 section corner witness ties.
- Nov 8, 2010 Daniel L. Bueltel, LS 43844, prepared a Certificate of Location of Government Corner and states "found a ¾" iron pipe. We accepted the pipe; it is in the center of the intersection. We did not dig because there is a 30" culvert running diagonally under the intersection." He also established 1 section corner witness tie and assigned a Yellow Medicine County coordinate to the monument.
- July 30, 2012 Duane A. Bonnema, LS 14895, while doing a re-monumentation survey for the Minnesota Department of Transportation excavated a 6.3' deep hole alongside a 36" Corrugated metal culvert. The hole was a rectangle lying parallel with the 36" metal culvert and covered an area extending 6.0' Northwesterly, 6.0' Southeasterly, 1.0' Northeasterly, 4.0' Southwesterly of Bueltel's coordinate position for this corner. At a depth of 4.5' a quarried 6"x6"x24" red granite Jasper Stone was found lying on its side. The original topsoil was observed at a depth of 3.5'. The 6"x6" stone lying horizontal and may have been disturbed by the installation of the corrugated metal culvert. The 6"x6" granite stone was found just south of the location where the United States Fish and Wildlife Service placed an iron in 2010, which is also the location certified by Bueltel in 2011. The United States Fish and Wildlife Service and Bueltel position were verified using their section corner witness ties. A Cast Iron capped 2" x 30" Telspar Iron Monument was placed at the United States Fish and Wildlife Service location and the coordinate position recorded by Bueltel. The 6"x6" granite stone was lying completely horizontal therefore 1 held with the United States Fish and Wildlife Service and Bueltel position. The 6"x6" granite stone was removed to prevent future confusion.