

Property & Public Services  
Property Records Division  
Yellow Medicine County, Minnesota  
I hereby certify that the within instrument  
was filed on May 3, 2013 at 10:15 AM

N/C  
BONNEMA SURVEYS INC  
PROFESSIONAL LAND SURVEYING  
1809 22ND STREET SW, SUITE 104  
WILLMAR, MN 56201

Janel Timm, Yellow Medicine County Recorder

By Debra Blood Deputy

### CERTIFICATE OF LOCATION OF GOVERNMENT CORNER

North Quarter Corner of Section 29, Township 114, Range 44

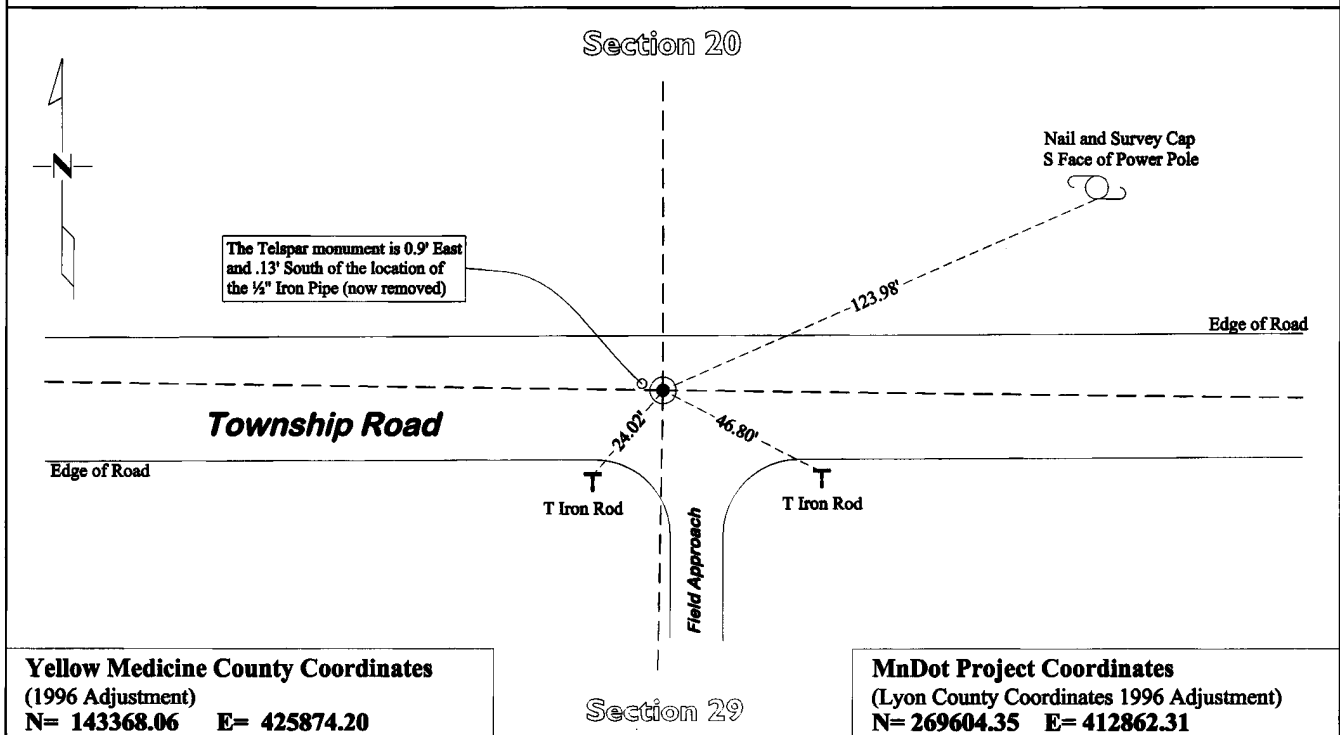
Fifth Principal Meridian, State of Minnesota, County of Yellow Medicine

At the corner location shown on the sketch:

On July 30, 2012 found a 1/2" Iron Pipe 0.2' Below Road Surface  
DATE

left monument as found       lowered monument       removed monument (explain)

On Jan. 11, 2013 placed a Cast Iron Capped 2" by 30" Telspar Monument 0.9' East and 0.13' South  
DATE  
of the 1/2" iron pipe location



**Yellow Medicine County Coordinates**  
(1996 Adjustment)  
N= 143368.06 E= 425874.20

**MnDot Project Coordinates**  
(Lyon County Coordinates 1996 Adjustment)  
N= 269604.35 E= 412862.31

Statement of evidence for this corner location is on back of this page.

I hereby certify that this survey, plan, or report was prepared by me or under my direct supervision and that I am a duly Licensed Land Surveyor under the laws of the state of Minnesota.

Signature [Signature]  
Date May 1, 2013

Typed or Printed Name: Duane A. Bonnema  
Reg. No. 14895

# **STATEMENT OF EVIDENCE**

---

## **North Quarter Corner Section 29, T114N-R44W**

1871

L. Harrington was contracted by the United States Government Land Office to perform the Original Public Land Survey in this township. He records in his field notes, "Set a post for ¼ sec cor raised mound as per instructions."

March 22 -  
April 29, 2010

Gary L. Kratz, Regional Land Surveyor for the United States Fish and Wildlife Service, while performing work in the SE ¼ of section 20, records in his field notes that he set a ½" x 16" iron pipe down 3" and dimensions to the NE and NW corners of this Section. He further notes on his section breakdown sheet that he set his monument by "single proportion fits land use S-ly Vague field line" and established 2 section corner witness ties.

July 30, 2012

Duane A. Bonnema, LS 14895, while doing re-monumentation survey for the Minnesota Department of Transportation, found a ½" x 16" Iron Pipe at the corner position. With the aid of a MnDOT backhoe he excavated a 4.3' deep hole that covered an area extending 2.0' North, 4.0' South, 16.0' East, 3.0' West of this Section corner location. At a depth of 2.8' he found the top of original top soil. There is no record evidence as to the location of this corner prior to Kratz's work in 2010. Bonnema also excavated the Northwest and Northeast corners of this Section, as part of his work for the Minnesota Department of Transportation, and found 7"x7" Jasper stones set by John Norgaard sometime between 1889-1901 at each of these corner locations. The stone at the Northeast corner was found at a position that differed from the position Kratz used for his survey in 2010, which would move the lost position for the North quarter corner 0.9' East and 0.13' South of the Iron Pipe he set. A large excavation was done at this corner position and no evidence of the Original Government Land Survey corner could be found. A Cast Iron capped 2" x 30" Telspar Iron Monument was placed at the lost location, on a straight line and equal distance between the Northwest and Northeast corners of this Section. This corner position is 0.9' East and 0.13' South of the Gary Kratz ½" Iron Pipe location set at the surface in 2010.