

Doc# 257604 Fee: \$0.00 2 Pages

Property & Public Services  
Property Records Division  
Yellow Medicine County, Minnesota  
I hereby certify that the within instrument  
was filed on May 3, 2013 at 10:20 AM

N/C  
BONNEMA SURVEYS INC  
PROFESSIONAL LAND SURVEYING  
1809 22ND STREET SW, SUITE 104  
WILLMAR, MN 56201

Janel Timm, Yellow Medicine County Recorder

By Debra Blood Deputy

### CERTIFICATE OF LOCATION OF GOVERNMENT CORNER

**Northeast** Corner of Section **10**, Township **114**, Range **45**

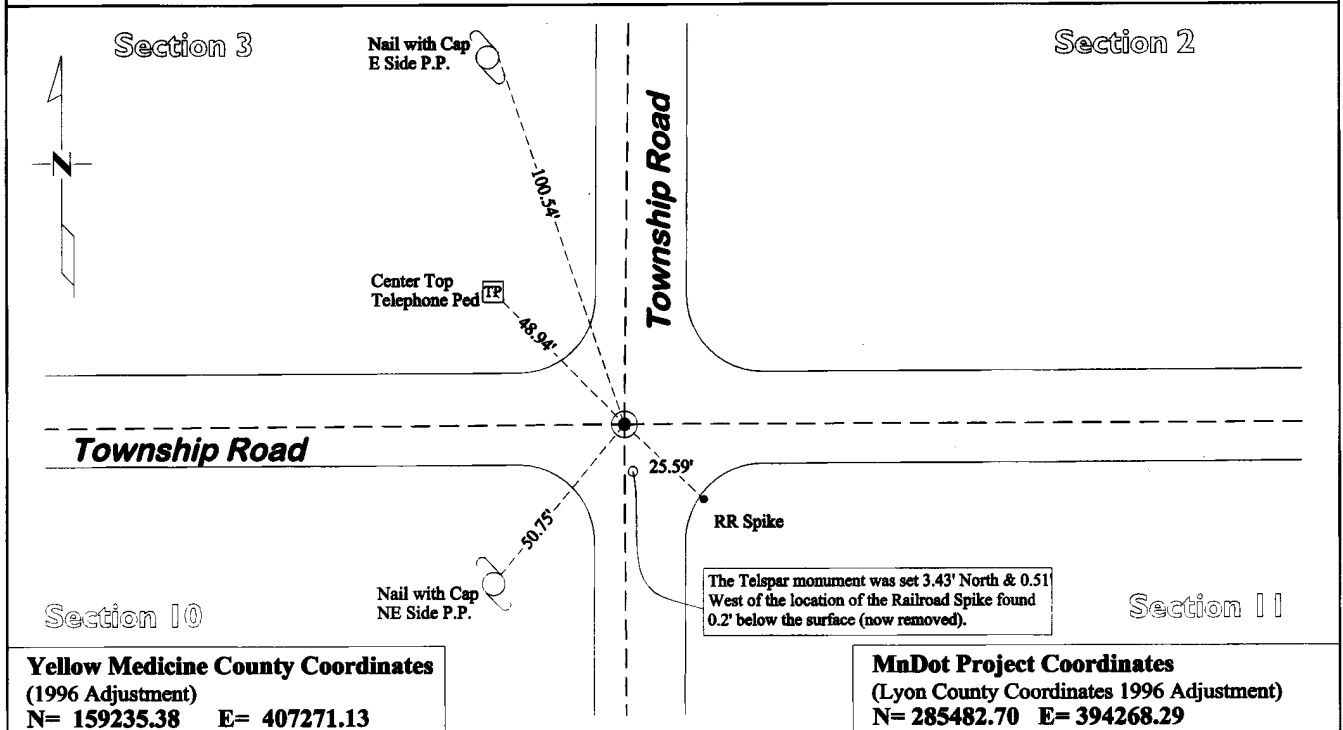
**Fifth** Principal Meridian, State of Minnesota, County of **Yellow Medicine**

At the corner location shown on the sketch:

On July 18, 2012 found a Rail road Spike 0.2' below the surface and a 7" x 7" x 28" inch Jasper Stone  
DATE

left monument as found       lowered monument       removed monument (explain)

On Dec. 12, 2012 placed a Cast Iron Capped 2" x 30" Telspar Monument at the location of the  
DATE 7" x 7" x 28" jasper stone



**Yellow Medicine County Coordinates**  
(1996 Adjustment)  
N= 159235.38 E= 407271.13

**MnDot Project Coordinates**  
(Lyon County Coordinates 1996 Adjustment)  
N= 285482.70 E= 394268.29

Statement of evidence for this corner location is on back of this page.

I hereby certify that this survey, plan, or report was prepared by me or under my direct supervision and that I am a duly Licensed Land Surveyor under the laws of the state of Minnesota.

Signature [Signature]  
Date May 1, 2013

Typed or Printed Name: Duane A. Bonnema  
Reg. No. 14895

# STATEMENT OF EVIDENCE

## Northeast Corner Section 10, T114N-R45W

- 1871 L. Harrington was contracted by the United States Government Land Office to perform the Original Public Land Survey in this township. He records in his field notes, "Set a post for the corner to sections 2, 3, 10 & 11, raised mound as per instructions".
- Nov 6, 1891 Jonah Peterman, County Surveyor, records in County Surveyor's Record Book, page 52, "I found all of the quarter posts in and to said Section 10", and notes "Government Corner Found" at this section corner position.
- May 1899 John Norgaard entered into a contract with the Yellow Medicine County Board for the "re-survey of all the section corners except the Township corners" in Yellow Medicine County. "The Monuments are Jasper Granite 2 feet long by 6 inches by 6 inches, all dimensions are given in feet." John Norgaard turned in his survey field notes to the Yellow Medicine County Recorder, who filed them as Doc No. 28417, on September 28, 1901. These field notes became the County Surveyor's Record Book "B".
- 1899 - 1901 John Norgaard, County Surveyor, records in the County Surveyor's Record Book B, page 194, "Found stone and stake in the center of road running east and west and on line of improvement north and south, set top of monument level with ground."
- 1918 Mr. Youngdale, records in County Surveyor's Record Book A, page 398 "NE corner - Found Jasper Monument" he shows dimensions to the section corners a mile west and a mile south.
- 1941 The Yellow Medicine County Highway Department Tie Book for Norman Township, page 3, notes "found a granite monument 4" deep" they recorded 7 section corner witness ties.
- 1951 The Yellow Medicine County Highway Department corner tie book for Norman Township, page 3 notes "found 18" deep steel on top MHD" and they record 3 section corner witness ties to the corner.
- Feb 27, 1951 MnDOT Alignments & Land Ties Book 2 page 2-1 notes, "Stone INP down 18" at INT of RDS E & W & N," and dimensions from this corner to the assumed N 1/4 corner of Section 10.
- February 1951 The MnDOT Alignments & Land Ties Book 2, page 2-29 notes "Found stone down 18" placed iron rod flush above stone," and record 3 section corner witness ties.
- Nov 18, 2010 Daniel L Bueltel RLS 43844, records that he found a "railroad spike" and dimensions Section 3 (Bueltel on Project No. 10-4071).
- July 18, 2012 Duane A. Bonnema Land Surveyor #14895, while doing a remonumentation survey for the Minnesota Department of Transportation found a railroad spike at the road surface. He dug a 4.0' deep hole that covered an area extending 6.5' north, 3.0' south, 6.0' east, and 1.0' west of the railroad spike location. The top of the original topsoil was observed to be at a depth of 2.6' below the surface. At a depth of 0.4' he found a quarried granite 7" x 7" x 28" jasper stone lying tipped to the northeast. The granite stone was probably knocked over during road construction. A MnDOT cast iron capped 2" square by 30" long iron telspar monument was placed at the position of the base of the 7" x 7" x 28" jasper stone and lies at the road surface.

Surveyor's Note: Puzzled by the 1941 "4 in. deep" vs the 1951 records noting a stone 18" deep. Road reconstruction?