

N/C
 BONNEMA SURVEYS INC
 PROFESSIONAL LAND SURVEYING
 1809 22ND STREET SW, SUITE 104
 WILLMAR, MN 56201

Janel Timm, Yellow Medicine County Recorder
 By Debra Blood Deputy

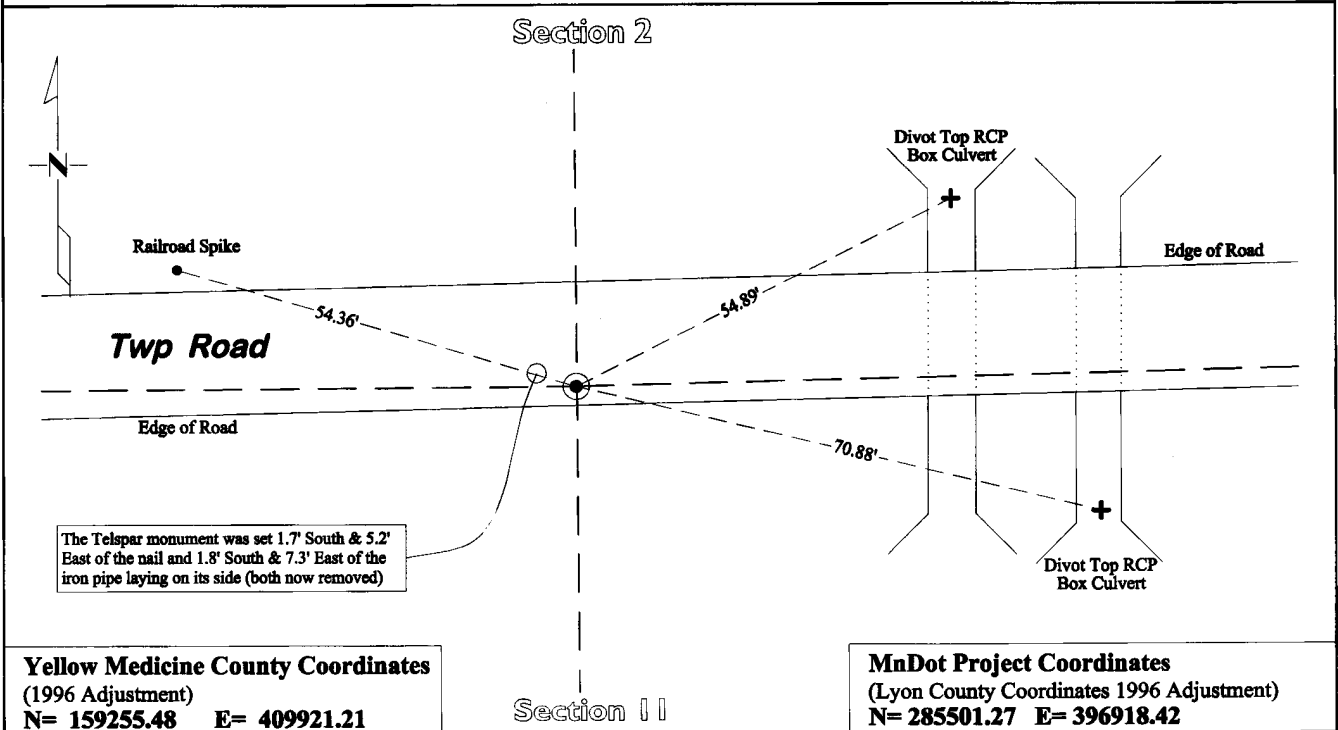
CERTIFICATE OF LOCATION OF GOVERNMENT CORNER

North Quarter Corner of Section **11**, Township **114**, Range **45**

Fifth Principal Meridian, State of Minnesota, County of **Yellow Medicine**

At the corner location shown on the sketch:

- On July 19, 2012 found a Nail 0.3' below surface, an Iron Pipe on its side 2.0' below surface, and a
DATE
3 1/2 X 9 1/2 X 18 inch Quarried Granite Stone with traces of wood next to stone 2.3' below surface
- left monument as found lowered monument removed monument (explain)
- On Dec. 12, 2012 placed a Cast Iron Capped 2" x 30" Telspar Monument at the location of the Quarried
DATE
Granite Stone



Statement of evidence for this corner location is on back of this page.

I hereby certify that this survey, plan, or report was prepared by me or under my direct supervision and that I am a duly Licensed Land Surveyor under the laws of the state of Minnesota.

Signature *Duane A. Bonnema*
 Date May 1, 2013

Typed or Printed Name: Duane A. Bonnema
 Reg. No. 14895

STATEMENT OF EVIDENCE

North Quarter Corner Section 11, T114N-R45W

1871

L. Harrington was contracted by the United States Government Land Office to perform the Original Public Land Survey in this township. He records in his field notes "Set a post for 1/4 sec cor and raised mound as per instructions".

July 19, 2012

Duane A. Bonnema, Land Surveyor #14895 while doing a remonumentation survey for the Minnesota Department of Transportation, found a nail at the road surface. He dug a 3.7' deep hole that covered an area extending 5.0' north, 3.0' south, 6.0' east, and 4.0' west of the nail location. The top of the original topsoil was observed to be at a depth of 2.0' below the surface. At a depth of 2.0' he found an old iron that had been knocked over, the iron was lying horizontally and was so deteriorated that he could not tell if it was a pipe or a solid shaft. At a depth of 2.3' he found a 3 1/2" x 9 1/2" x 18" square cut quarried granite stone with traces of wood lying in the soil along the northwest corner of the stone. It appears that the iron was placed without knowing that the stone was nearby and below. A meeting was held with Lyle Moseng and Daniel Buelteel, (past and current Lyon County Surveyors) and at this meeting it was mutually agreed that the 3 1/2" x 9 1/2" x 18" square cut quarried granite stone appears to be the best available evidence of this Section Corner location. On December 12, 2012, a cast iron capped 2" square by 30" long iron talspar monument was placed at the surface at the position of the found 3 1/2" x 9 1/2" x 18" square cut quarried granite stone. The newly placed MNDOT talspar monument is located 5.23' south and 1.66' east of the nail found at the surface.