

Property & Public Services  
Property Records Division  
Yellow Medicine County, Minnesota  
I hereby certify that the within instrument  
was filed on May 3, 2013 at 10:35 AM

N/C  
BONNEMA SURVEYS INC  
PROFESSIONAL LAND SURVEYING  
1809 22ND STREET SW, SUITE 104  
WILLMAR, MN 56201

Janel Timm, Yellow Medicine County Recorder

By Debra Blood Deputy

### CERTIFICATE OF LOCATION OF GOVERNMENT CORNER

**East Quarter** Corner of Section **11**, Township **114**, Range **45**

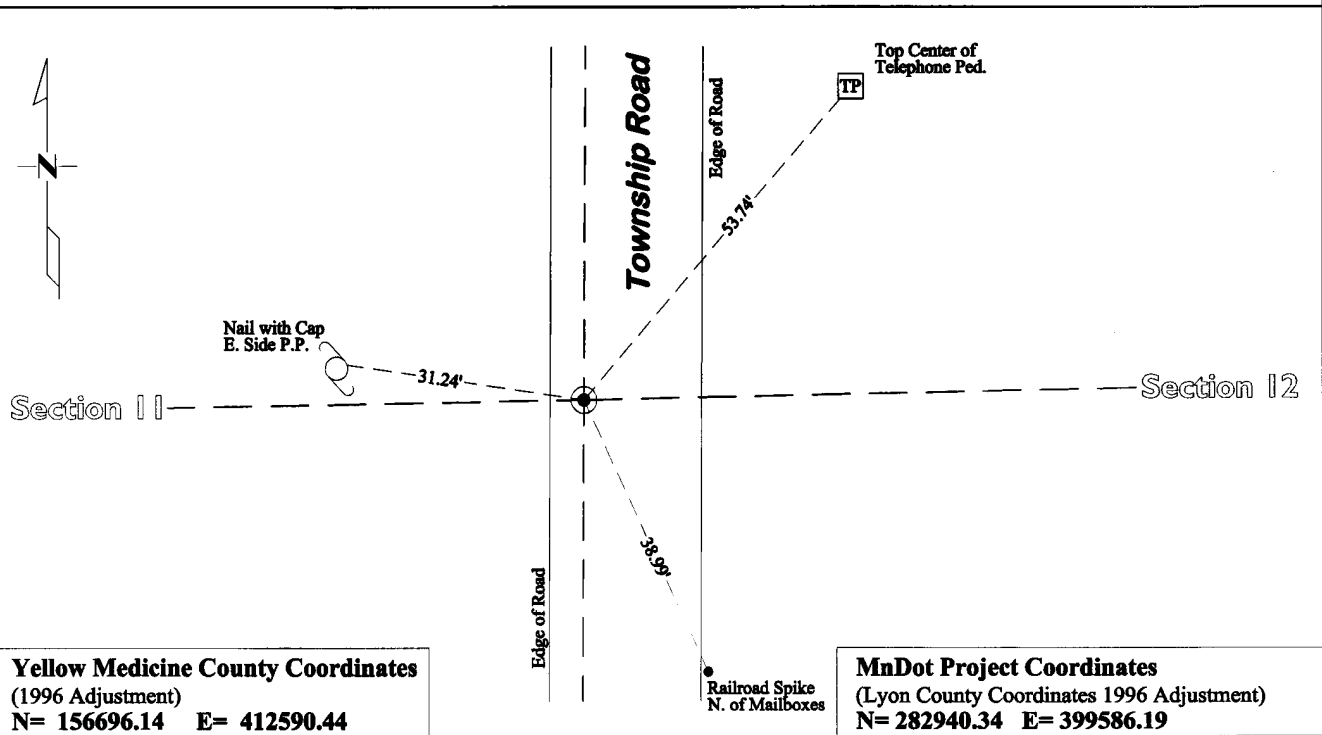
**Fifth** Principal Meridian, State of Minnesota, County of **Yellow Medicine**

At the corner location shown on the sketch:

On July 19, 2012 found a 2 1/2" Iron Pipe 0.5' below surface  
DATE

left monument as found       lowered monument       removed monument (explain)

On August 7, 2012 placed a Cast Iron Capped 2" x 30" Telspar Monument at the location of the Iron Pipe  
DATE



**Yellow Medicine County Coordinates**  
(1996 Adjustment)  
N= 156696.14 E= 412590.44

**MnDot Project Coordinates**  
(Lyon County Coordinates 1996 Adjustment)  
N= 282940.34 E= 399586.19

Statement of evidence for this corner location is on back of this page.

I hereby certify that this survey, plan, or report was prepared by me or under my direct supervision and that I am a duly Licensed Land Surveyor under the laws of the state of Minnesota.

Signature [Signature]  
Date May 1, 2013

Typed or Printed Name: Duane A. Bonnema  
Reg. No. 14895

# **STATEMENT OF EVIDENCE**

---

## **East Quarter Corner Section 11, T114N-R45W**

1871

L. Harrington was contracted by the United States Government Land Office to perform the Original Public Land Survey in this township. He records in his field notes, "Set a post for ¼ sec cor raised mound as per instructions".

May 16, 1899

John Norgaard entered into a contract with the Yellow Medicine County Board for the "re-survey of all the section corners except the Township corners" in Yellow Medicine County. "The Monuments are Jasper Granite 2' long by 6 inches by 6 inches, all dimensions are given in feet." John Norgaard turned in his survey field notes to the Yellow Medicine County Recorder, who filed them as Doc. No. 28417, on September 28, 1901. These field notes became the County Surveyor's Record Book B.

July 19, 2012

Duane A. Bonnema Land Surveyor #14895, while doing a remonumentation survey for the Minnesota Department of Transportation dug a 4.0' deep hole that covered an area extending 3.5' north, 7.0' south, 7.0' east, and 2.0' west of this section corner location. The top of original topsoil was observed to be at a depth of 2.0' below the surface. At a depth of 0.5' feet a 2½" diameter iron pipe approximately 30" long was found. A cast iron capped 2" square by 30" long iron telspar monument was placed at the surface at the position of the found 2½" diameter iron pipe.